

# \$1,190,000 - 141 Coachwood Point W, Lethbridge

MLS® #A2106765

**\$1,190,000**

4 Bedroom, 4.00 Bathroom, 3,156 sqft

Residential on 0.17 Acres

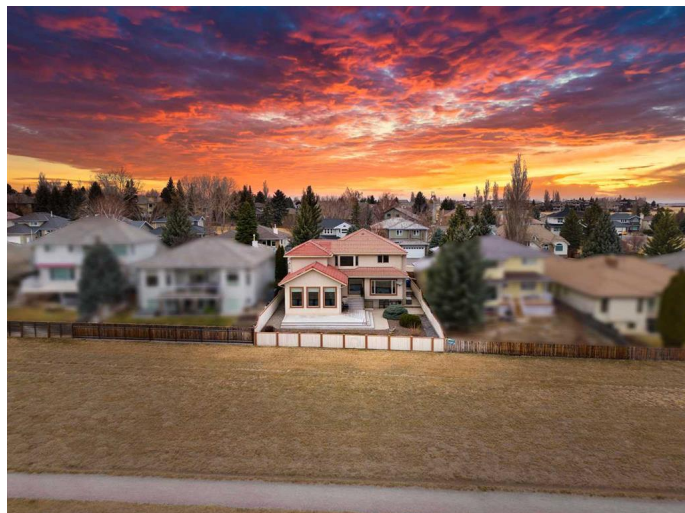
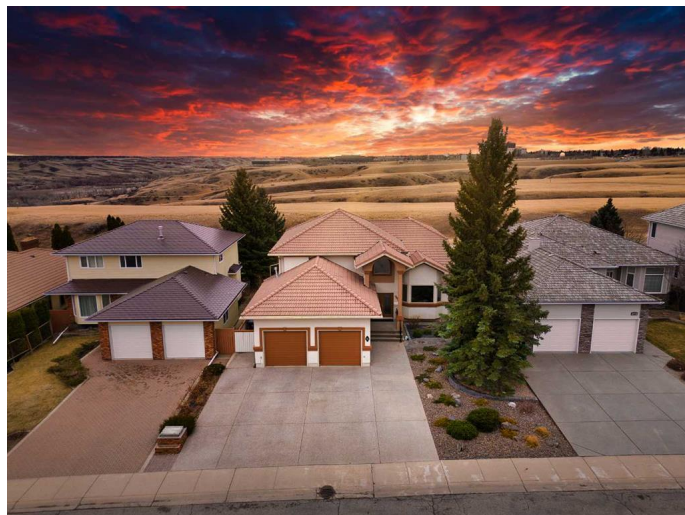
Ridgewood, Lethbridge, Alberta

EXECUTIVE LUXURY HOME WITH A MILLION DOLLAR VIEW. This incredible two story dream home exceeds expectations on all levels. The front street appeal is apparent with a perfectly manicured yard as well as custom finished exterior trim. The front entrance is grandiose with an impressive spiral stair case leading to a quaint sitting / reading area , office, bedroom , bathroom ,primary bedroom with incredible ensuite and walk in closet, all with outstanding coulee views. The main floors boasts executive style living with a formal dining room, massive master chef kitchen / family room and a separate sunken sitting tv fireplace room. The main floor also boasts another bathroom , huge rear entrance leading into a pristine heated insulated garage. The lower level of this home offers two large bedrooms, a gym , bathroom , workroom and another huge family room, there is also a walk up walk out covered entrance leading to an impeccable huge deck and manicured back yard/ out door living space

Built in 1988

## Essential Information

|            |             |
|------------|-------------|
| MLS® #     | A2106765    |
| Price      | \$1,190,000 |
| Bedrooms   | 4           |
| Bathrooms  | 4.00        |
| Full Baths | 3           |



|                |             |
|----------------|-------------|
| Half Baths     | 1           |
| Square Footage | 3,156       |
| Acres          | 0.17        |
| Year Built     | 1988        |
| Type           | Residential |
| Sub-Type       | Detached    |
| Style          | 2 Storey    |
| Status         | Active      |

### **Community Information**

|             |                       |
|-------------|-----------------------|
| Address     | 141 Coachwood Point W |
| Subdivision | Ridgewood             |
| City        | Lethbridge            |
| County      | Lethbridge            |
| Province    | Alberta               |
| Postal Code | T1K 6A6               |

### **Amenities**

|                |                        |
|----------------|------------------------|
| Parking Spaces | 6                      |
| Parking        | Double Garage Attached |
| # of Garages   | 2                      |

### **Interior**

|                   |  |
|-------------------|--|
| Interior Features | Central Vacuum, No Animal Home, No Smoking Home, Open Floorplan  |
| Appliances        | Central Air Conditioner, Dishwasher, Electric Oven, Electric Stove, Garage Control(s), Microwave, Refrigerator, Washer/Dryer, Window Coverings |
| Heating           | Fireplace(s), Forced Air   |
| Cooling           | Central Air  |
| Fireplace         | Yes  |
| # of Fireplaces   | 1  |
| Fireplaces        | Gas  |
| Has Basement      | Yes  |
| Basement          | Finished, Full, Walk-Up To Grade   |

### **Exterior**

|                   |   |
|-------------------|---|
| Exterior Features | Misting System                                      |
| Lot Description   | Back Yard, Backs on to Park/Green Space, Landscaped |
| Roof              | Clay Tile   |

|              |                  |
|--------------|------------------|
| Construction | Concrete, Stucco |
| Foundation   | Poured Concrete  |

**Additional Information**

|                |                    |
|----------------|--------------------|
| Date Listed    | February 9th, 2024 |
| Days on Market | 533                |
| Zoning         | R-L                |

**Listing Details**

|                |                                 |
|----------------|---------------------------------|
| Listing Office | RE/MAX REAL ESTATE - LETHBRIDGE |
|----------------|---------------------------------|

Data is supplied by Pillar 9â„¢ MLS® System. Pillar 9â„¢ is the owner of the copyright in its MLS® System. Data is deemed reliable but is not guaranteed accurate by Pillar 9â„¢. The trademarks MLS®, Multiple Listing Service® and the associated logos are owned by The Canadian Real Estate Association (CREA) and identify the quality of services provided by real estate professionals who are members of CREA. Used under license.