

# \$1,500,000 - Lot 1 Plan 9925415 Holmes Trail, Slave Lake

MLS® #A2134274

**\$1,500,000**

0 Bedroom, 0.00 Bathroom,  
Land on 104.40 Acres

NONE, Slave Lake, Alberta

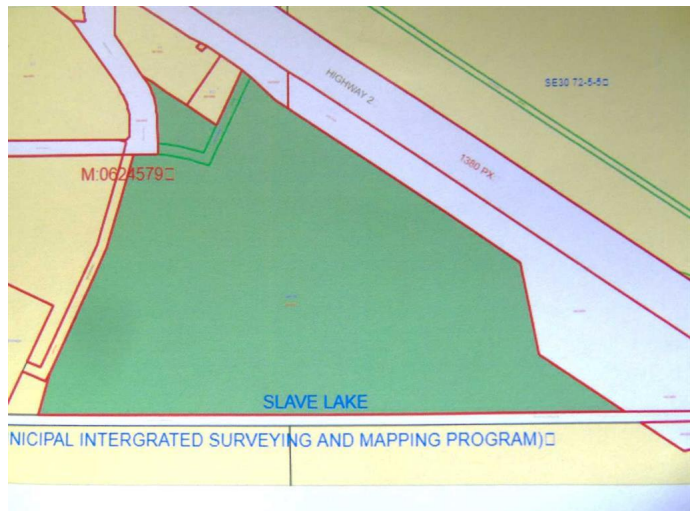
A fantastic development opportunity within the Town of Slave Lake boundaries! 104 acres of prime developable land which can be accessed off of Holmes trail south up the hill from the east Highway 2 intersection by the Lakeview Hotel. Municipal services: Power, Gas, Water and Sewer are nearby and can be accessed by any developer. Property is right off of highway 2 but the property must be accessed from Holmes trail. With the community of Slave Lake growing at a steady pace and a demand for commercial, industrial land becoming a necessity this could be the opportunity you have been waiting for!!

## Essential Information

MLS® #	A2134274
Price	\$1,500,000
Bathrooms	0.00
Acres	104.40
Type	Land
Sub-Type	Commercial Land
Status	Active

## Community Information

Address	Lot 1 Plan 9925415 Holmes Trail
Subdivision	NONE
City	Slave Lake



County	Lesser Slave River No. 124, M.D. of
Province	Alberta
Postal Code	T0G 2A0

### Amenities

Utilities	Electricity Available, Natural Gas Available, Sewer Available, Water Available
-----------	--------------------------------------------------------------------------------

### Additional Information

Date Listed	May 20th, 2024
Days on Market	334
Zoning	Council Direct Control

### Listing Details

Listing Office	CENTURY 21 NORTHERN REALTY
----------------	----------------------------

Data is supplied by Pillar 9â„¢ MLS® System. Pillar 9â„¢ is the owner of the copyright in its MLS® System. Data is deemed reliable but is not guaranteed accurate by Pillar 9â„¢. The trademarks MLS®, Multiple Listing Service® and the associated logos are owned by The Canadian Real Estate Association (CREA) and identify the quality of services provided by real estate professionals who are members of CREA. Used under license.