

\$58,900 - 104, 1221b Westhaven Drive, Edson

MLS® #A2142963

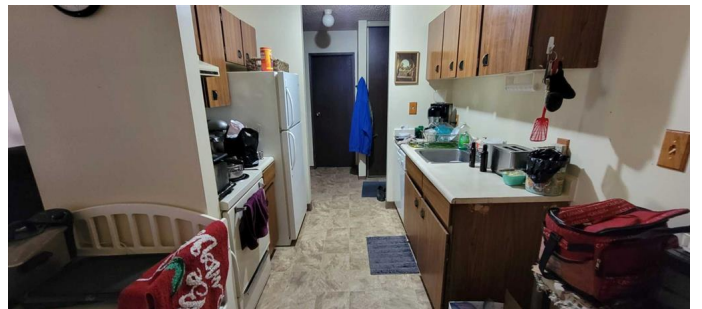
\$58,900

1 Bedroom, 1.00 Bathroom, 614 sqft
Residential on 0.00 Acres

Edson, Edson, Alberta

One bedroom - one bath condominium close to schools and walking trails. This main-floor unit has updated flooring and is a perfect low-cost option for a first-time buyer or investor.

Built in 1981



Essential Information

| | |
|----------------|-------------|
| MLS® # | A2142963 |
| Price | \$58,900 |
| Bedrooms | 1 |
| Bathrooms | 1.00 |
| Full Baths | 1 |
| Square Footage | 614 |
| Acres | 0.00 |
| Year Built | 1981 |
| Type | Residential |
| Sub-Type | Apartment |
| Style | Apartment |
| Status | Active |

Community Information

| | |
|-------------|----------------------------|
| Address | 104, 1221b Westhaven Drive |
| Subdivision | Edson |
| City | Edson |
| County | Yellowhead County |
| Province | Alberta |
| Postal Code | T7E 1P9 |

Amenities

| | |
|----------------|--------------|
| Amenities | Coin Laundry |
| Parking Spaces | 1 |
| Parking | Stall |

Interior

| | |
|-------------------|--|
| Interior Features | Laminate Counters |
| Appliances | Dishwasher, Refrigerator, Window Coverings, Stove(s) |
| Heating | Hot Water |
| Cooling | None |
| # of Stories | 3 |

Exterior

| | |
|-------------------|------------|
| Exterior Features | Balcony |
| Construction | Wood Frame |

Additional Information

| | |
|----------------|-----------------|
| Date Listed | June 19th, 2024 |
| Days on Market | 307 |
| Zoning | R-4 |

Listing Details

| | |
|----------------|------------------|
| Listing Office | ALPINE REALTY 3% |
|----------------|------------------|

Data is supplied by Pillar 9â„¢ MLSÂ® System. Pillar 9â„¢ is the owner of the copyright in its MLSÂ® System. Data is deemed reliable but is not guaranteed accurate by Pillar 9â„¢. The trademarks MLSÂ®, Multiple Listing ServiceÂ® and the associated logos are owned by The Canadian Real Estate Association (CREA) and identify the quality of services provided by real estate professionals who are members of CREA. Used under license.