

\$825,000 - 64 View Ridge Place, Rural Rocky View County

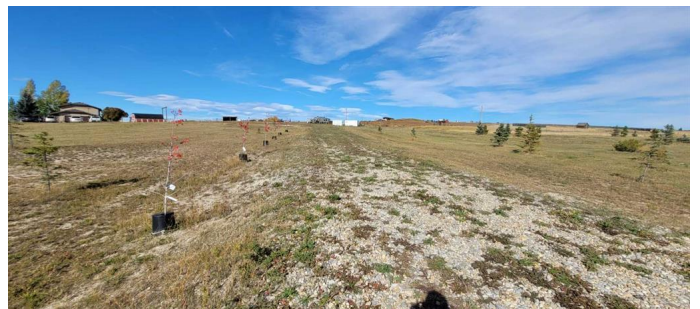
MLS® #A2170449

\$825,000

0 Bedroom, 0.00 Bathroom,
Land on 5.54 Acres

NONE, Rural Rocky View County, Alberta

Breathtaking mountain views in a private location less than 5 minutes away from Cochrane. This ideal 5.54 acres of land is ready for development just on the edge of North of Cochrane. The property is fully fenced, has a drilled well, power, and has fully paved roads right up to the metal swing gate. 170 spruce, pine and aspen trees have been planted on the property so all that you need to do is plan what type of dream home you want to live in.



Essential Information

MLS® #	A2170449
Price	\$825,000
Bathrooms	0.00
Acres	5.54
Type	Land
Sub-Type	Residential Land
Status	Active

Community Information

Address	64 View Ridge Place
Subdivision	NONE
City	Rural Rocky View County
County	Rocky View County
Province	Alberta
Postal Code	T4C2B1

Additional Information

Date Listed	October 7th, 2024
Days on Market	182
Zoning	R_RUR

Listing Details

Listing Office	RE/MAX Realty Professionals
----------------	-----------------------------

Data is supplied by Pillar 9â„¸ MLSÂ® System. Pillar 9â„¸ is the owner of the copyright in its MLSÂ® System. Data is deemed reliable but is not guaranteed accurate by Pillar 9â„¸. The trademarks MLSÂ®, Multiple Listing ServiceÂ® and the associated logos are owned by The Canadian Real Estate Association (CREA) and identify the quality of services provided by real estate professionals who are members of CREA. Used under license.