

\$1,300,000 - 3419 36 Street N, Lethbridge

MLS® #A2176323

\$1,300,000

0 Bedroom, 0.00 Bathroom,
Land on 5.00 Acres

Sherring Industrial Park, Lethbridge, Alberta

Great corner lot zoned I-H. The general area is set up for Heavy Industrial and is already adjacent to other Heavy Industrial. This is a good sized parcel that is basically ready for the next user. The lot is on a future rail spur so that is very appealing.

Essential Information

MLS® #	A2176323
Price	\$1,300,000
Bathrooms	0.00
Acres	5.00
Type	Land
Sub-Type	Industrial Land
Status	Active

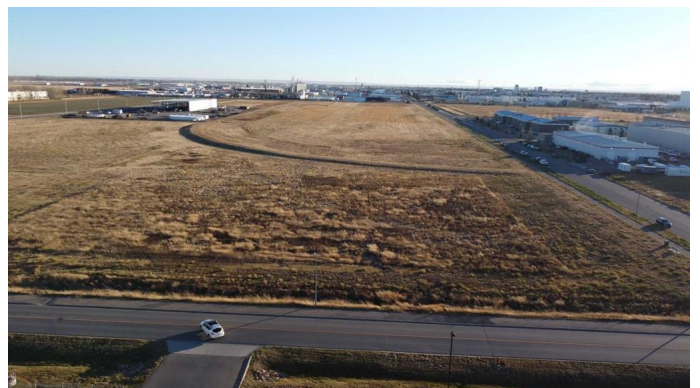
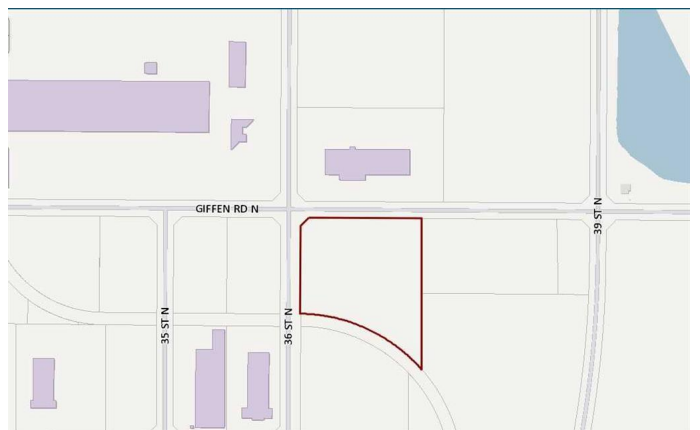
Community Information

Address	3419 36 Street N
Subdivision	Sherring Industrial Park
City	Lethbridge
County	Lethbridge
Province	Alberta
Postal Code	T1H 5V9

Additional Information

Date Listed	November 5th, 2024
Days on Market	230
Zoning	I-H

Listing Details



Listing Office

Lethbridge Real Estate.com

Data is supplied by Pillar 9â„¸ MLSÂ® System. Pillar 9â„¸ is the owner of the copyright in its MLSÂ® System. Data is deemed reliable but is not guaranteed accurate by Pillar 9â„¸. The trademarks MLSÂ®, Multiple Listing ServiceÂ® and the associated logos are owned by The Canadian Real Estate Association (CREA) and identify the quality of services provided by real estate professionals who are members of CREA. Used under license.