

\$429,900 - 8441 102 Avenue, Grande Prairie

MLS® #A2187209

\$429,900

3 Bedroom, 3.00 Bathroom, 1,400 sqft
Residential on 0.12 Acres

Crystal Landing, Grande Prairie, Alberta

Introducing an exciting opportunity to build your dream home in the sought-after Crystal Landing neighborhood! This soon-to-be-built two-story home offers you the chance to select your own finishes and personalize the space to suit your style. With a planned layout that includes an open-concept main floor, a spacious kitchen with ample storage and counter space, and a welcoming foyer, this home is designed for both comfort and functionality. Upstairs, the plan features three bedrooms, including a grand primary suite with a walk-in closet and private ensuite, as well as a conveniently located laundry area. Youâ€™™ also have the flexibility to design the unfinished basement and the option to add a detached double garage. This is your opportunity to create a home that fits your vision from the very start. Contact us today to learn more and start the journey toward building your perfect home!

Built in 2025

Essential Information

MLS® #	A2187209
Price	\$429,900
Bedrooms	3
Bathrooms	3.00
Full Baths	2
Half Baths	1
Square Footage	1,400



Acres	0.12
Year Built	2025
Type	Residential
Sub-Type	Detached
Style	2 Storey
Status	Active

Community Information

Address	8441 102 Avenue
Subdivision	Crystal Landing
City	Grande Prairie
County	Grande Prairie
Province	Alberta
Postal Code	T8X0S8

Amenities

Parking Spaces	2
Parking	Parking Pad

Interior

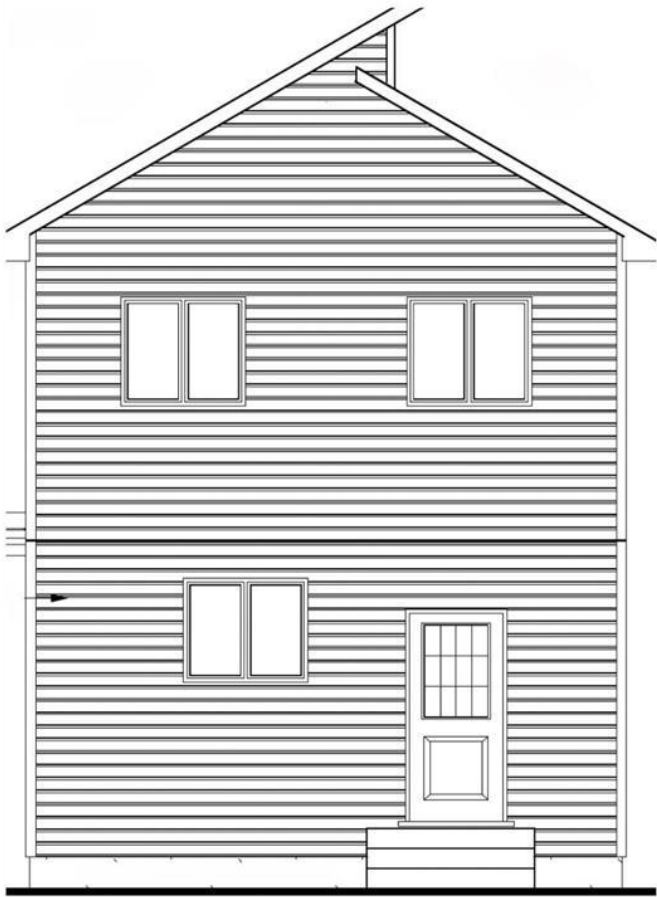
Interior Features	Kitchen Island, No Animal Home, No Smoking Home, Open Floorplan, Quartz Counters
Appliances	Microwave Hood Fan
Heating	Forced Air, Natural Gas
Cooling	None
Fireplace	Yes
# of Fireplaces	1
Fireplaces	Electric
Basement	None

Exterior

Exterior Features	Other
Lot Description	Back Yard, City Lot
Roof	Asphalt Shingle
Construction	Vinyl Siding, Concrete
Foundation	Poured Concrete

Additional Information

Date Listed	January 10th, 2025
-------------	--------------------

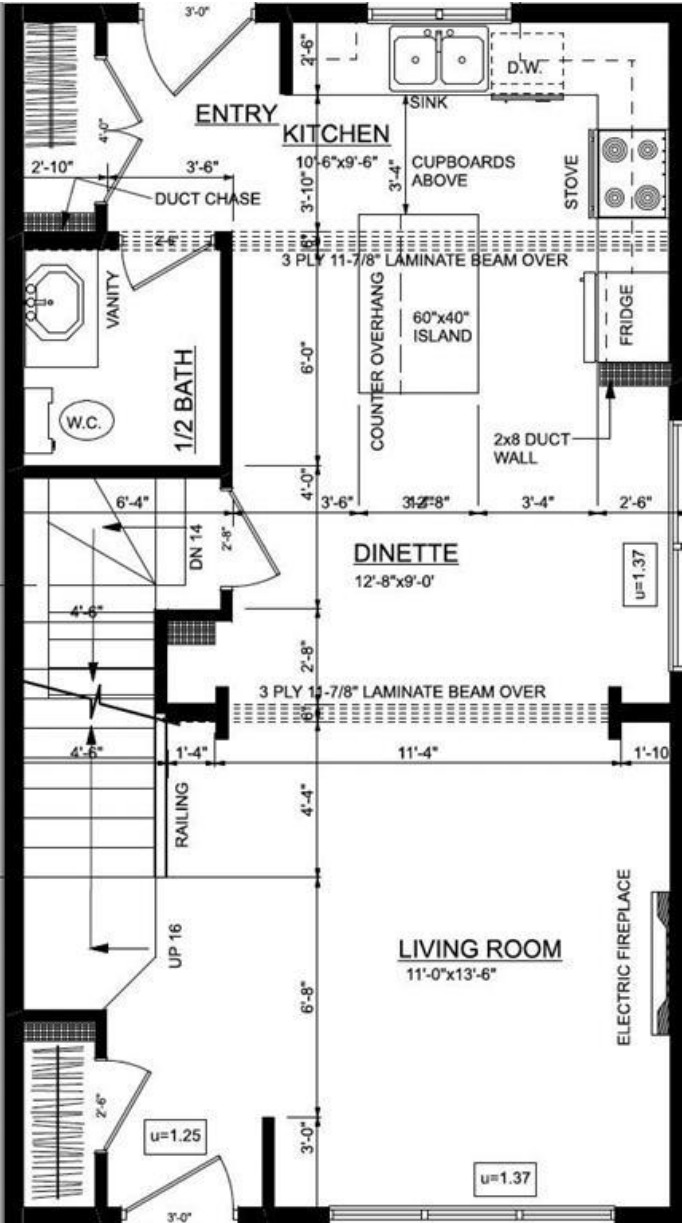


Days on Market111

ZoningRS

Listing Details

Listing OfficeRE/MAX Grande Prairie



Data is supplied by Pillar 9â„¢ MLSÂ® System. Pillar 9â„¢ is the owner of the copyright in its MLSÂ® System. Data is deemed reliable but is not guaranteed accurate by Pillar 9â„¢. The trademarks MLSÂ®, Multiple Listing ServiceÂ® and the associated logos are owned by The Canadian Real Estate Association (CREA) and identify the quality of services provided by real estate professionals who are members of CREA. Used under license.