

# \$319,000 - 330 Prairie Garden Way S, Lethbridge

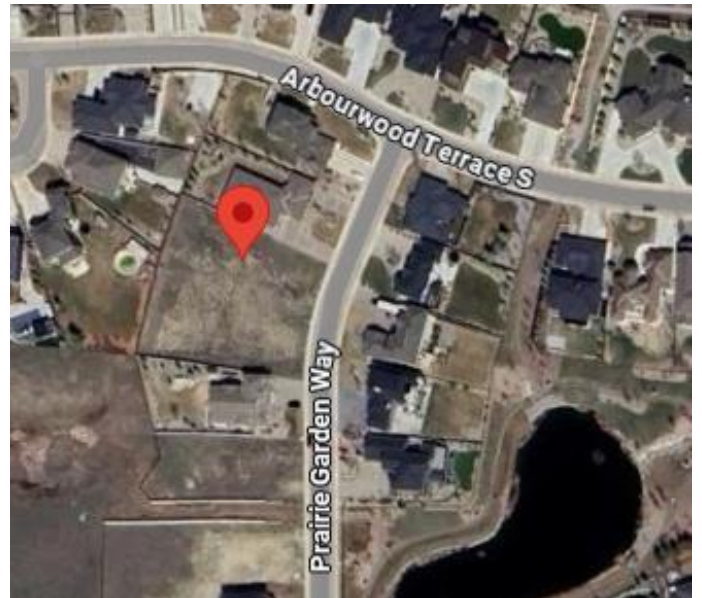
MLS® #A2190256

**\$319,000**

0 Bedroom, 0.00 Bathroom,  
Land on 0.39 Acres

Arbour Ridge, Lethbridge, Alberta

Welcome to Prairie Arbour Estates! This community is the premier destination for estate living in south Lethbridge and serves as the benchmark for upscale developments in southern Alberta. Prairie Arbour Estates boasts unrivaled views of Sixmile Coulee and easy access to walking trails and the spectacular Prairie Arbour Park. This 0.39 acre lot has terrific frontage and can house many types and styles of home, including a large bungalow, bi-level, or two storey. Lots of this size are limited in south Lethbridge and even more limited at this price point. Comparative market value for a lot of this size and location makes this property a tremendously valuable investment.



## Essential Information

MLS® #	A2190256
Price	\$319,000
Bathrooms	0.00
Acres	0.39
Type	Land
Sub-Type	Residential Land
Status	Active

## Community Information

Address	330 Prairie Garden Way S
Subdivision	Arbour Ridge
City	Lethbridge

County	Lethbridge
Province	Alberta
Postal Code	T1K 5V8

## Exterior

Lot Description	Back Yard, Near Shopping Center, Street Lighting
-----------------	--

## Additional Information

Date Listed	January 26th, 2025
Days on Market	142
Zoning	DC

## Listing Details

Listing Office	REAL BROKER
----------------	-------------

Data is supplied by Pillar 9â„¢ MLS® System. Pillar 9â„¢ is the owner of the copyright in its MLS® System. Data is deemed reliable but is not guaranteed accurate by Pillar 9â„¢. The trademarks MLS®, Multiple Listing Service® and the associated logos are owned by The Canadian Real Estate Association (CREA) and identify the quality of services provided by real estate professionals who are members of CREA. Used under license.