

# \$2,449,000 - 1 Eagle Landing, Canmore

MLS® #A2192911

**\$2,449,000**

5 Bedroom, 4.00 Bathroom, 3,184 sqft

Residential on 0.26 Acres

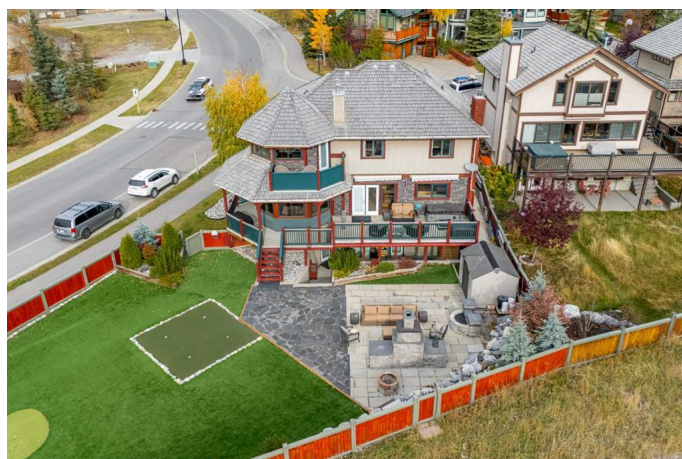
Eagle Terrace, Canmore, Alberta

Located on the sunny side of Canmore in the highly sought after Eagle Terrace neighborhood, this 3,200 sqft single-family home offers 360-degree panoramic mountain views, providing a stunning backdrop from every angle. Sitting on a sizable 11,000 sqft lot, this home features 5 bedrooms and 4 bathrooms spread across multiple levels, making it perfect for families and guests alike. The expansive, masterfully landscaped, low maintenance backyard is designed for relaxation and entertainment, complete with a large stone fireplace, water feature, and chipping green. The yard provides additional space to park a camper or store larger outdoor equipment. Surrounded by breathtaking mountain scenery and located near some of the best biking and hiking trails in Canmore, This is the prefect family home for outdoor enthusiasts.

Built in 1998

## Essential Information

|                |             |
|----------------|-------------|
| MLS® #         | A2192911    |
| Price          | \$2,449,000 |
| Bedrooms       | 5           |
| Bathrooms      | 4.00        |
| Full Baths     | 3           |
| Half Baths     | 1           |
| Square Footage | 3,184       |
| Acres          | 0.26        |



|            |             |
|------------|-------------|
| Year Built | 1998        |
| Type       | Residential |
| Sub-Type   | Detached    |
| Style      | 3 Storey    |
| Status     | Active      |

### Community Information

|             |                        |
|-------------|------------------------|
| Address     | 1 Eagle Landing        |
| Subdivision | Eagle Terrace          |
| City        | Canmore                |
| County      | Bighorn No. 8, M.D. of |
| Province    | Alberta                |
| Postal Code | T1W 2Y1                |

### Amenities

|                |   |
|----------------|---|
| Parking Spaces | 4   |
| Parking        | Concrete Driveway, Double Garage Attached, Driveway, Garage Door Opener, Garage Faces Front |
| # of Garages   | 2   |

### Interior

|                   |  |
|-------------------|--|
| Interior Features | Beamed Ceilings, Built-in Features, Granite Counters, Kitchen Island, Pantry, Sauna, Separate Entrance, Storage    |
| Appliances        | Central Air Conditioner, Dishwasher, Electric Range, Electric Stove, Garage Control(s), Refrigerator, Washer/Dryer |
| Heating           | Forced Air, Natural Gas  |
| Cooling           | Central Air  |
| Fireplace         | Yes  |
| # of Fireplaces   | 3  |
| Fireplaces        | Den, Gas, Living Room, Wood Burning Stove  |
| Has Basement      | Yes  |
| Basement          | Exterior Entry, Full, Suite, Walk-Up To Grade  |

### Exterior

|                   |  |
|-------------------|--|
| Exterior Features | Awning(s), Balcony, BBQ gas line, Fire Pit, Private Yard, Storage  |
| Lot Description   | Back Yard, Corner Lot, Creek/River/Stream/Pond, Cul-De-Sac, Front Yard, Landscaped, Low Maintenance Landscape, Rock Outcropping, Triangular Lot, Views, Wedge Shaped Lot |
| Roof              | Cedar Shake  |
| Construction      | Stone, Wood Frame, Wood Siding   |

Foundation                Poured Concrete

### **Additional Information**

Date Listed                March 1st, 2025

Days on Market           110

Zoning                      R1

### **Listing Details**

Listing Office              CENTURY 21 NORDIC REALTY

Data is supplied by Pillar 9â„¢ MLS® System. Pillar 9â„¢ is the owner of the copyright in its MLS® System. Data is deemed reliable but is not guaranteed accurate by Pillar 9â„¢. The trademarks MLS®, Multiple Listing Service® and the associated logos are owned by The Canadian Real Estate Association (CREA) and identify the quality of services provided by real estate professionals who are members of CREA. Used under license.