

\$899,900 - 84071 Hwy 810, Rural Willow Creek No. 26, M.D. of

MLS® #A2197090

\$899,900

5 Bedroom, 3.00 Bathroom, 1,866 sqft
Residential on 10.00 Acres

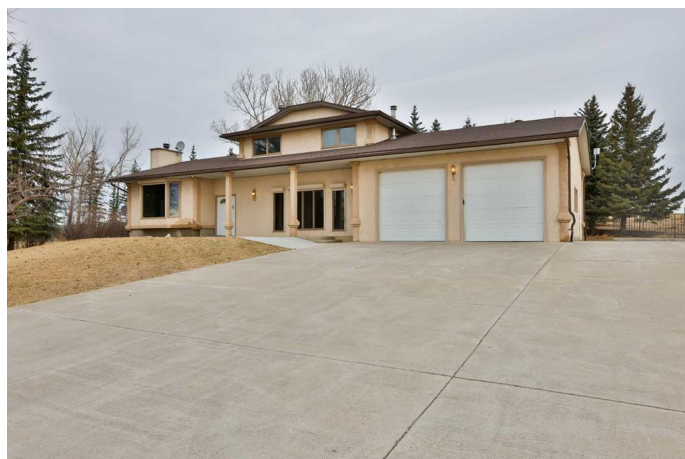
NONE, Rural Willow Creek No. 26, M.D. of,
Alberta

OPEN HOUSE BY APPOINTMENT10
ACRES!!!! HUGEEEEEEEE QUONSET!!! WELL
TREED !!! 1844 SQ. FT FAMILY HOME WITH
FIVE BEDROOMS AND 3 BATHROOMS ON
A PAVED ROAD. HIGHLIGHTING AN
UPGRADED KITCHEN WITH STAINLESS
STEEL APPLIANCES, A LARGE INVITING
FAMILY ROOM , MAIN FLOOR LAUNDRY,
AND AN ATTACHED HEATED 26X28 FT
GARAGE . TONS AND TONS OF
POSSIBILITIES WITH THIS RECTANGLE
PIECED YARD, A GOOD MIX FOR ANIMALS,
GARDENS, STORAGE, AND OF COURSE
THIS MASSIVE 68X 100 FT HEATED SHOP.

Built in 1980

Essential Information

MLS® #	A2197090
Price	\$899,900
Bedrooms	5
Bathrooms	3.00
Full Baths	2
Half Baths	1
Square Footage	1,866
Acres	10.00
Year Built	1980
Type	Residential



Sub-Type	Detached
Style	3 Level Split, Acreage with Residence
Status	Active

Community Information

Address	84071 Hwy 810
Subdivision	NONE
City	Rural Willow Creek No. 26, M.D. of
County	Willow Creek No. 26, M.D. of
Province	Alberta
Postal Code	T0L 0Z0

Amenities

Parking	Double Garage Attached, Parking Pad, RV Access/Parking
# of Garages	2

Interior

Interior Features	Open Floorplan
Appliances	None
Heating	Forced Air
Cooling	Central Air
Fireplace	Yes
# of Fireplaces	1
Fireplaces	Wood Burning
Has Basement	Yes
Basement	Finished, Full

Exterior

Exterior Features	Garden, Storage
Lot Description	Farm, Garden, Many Trees
Roof	Asphalt Shingle
Construction	Stucco
Foundation	Other

Additional Information

Date Listed	March 24th, 2025
Days on Market	91
Zoning	RURAL GENERAL

Listing Details

Listing Office

RE/MAX REAL ESTATE - LETHBRIDGE

Data is supplied by Pillar 9â„¢ MLSÂ® System. Pillar 9â„¢ is the owner of the copyright in its MLSÂ® System. Data is deemed reliable but is not guaranteed accurate by Pillar 9â„¢. The trademarks MLSÂ®, Multiple Listing ServiceÂ® and the associated logos are owned by The Canadian Real Estate Association (CREA) and identify the quality of services provided by real estate professionals who are members of CREA. Used under license.