

\$220,000 - 213 Pinnacle Blvd, La Crete

MLS® #A2198035

\$220,000

0 Bedroom, 0.00 Bathroom,
Land on 3.16 Acres

NONE, La Crete, Alberta

The perfect spot for your dream home in Pinnacle Estates!! This stunning 3.16-acre lot is beautifully bordered by lush trees for ultimate privacy. With a driveway and pristine lawn already in place, this property is ready for you to bring your vision to life. Perfect location just 2 minutes from town, with all services at the property line (Including town water) , this is the ideal setting for your forever home!

Essential Information

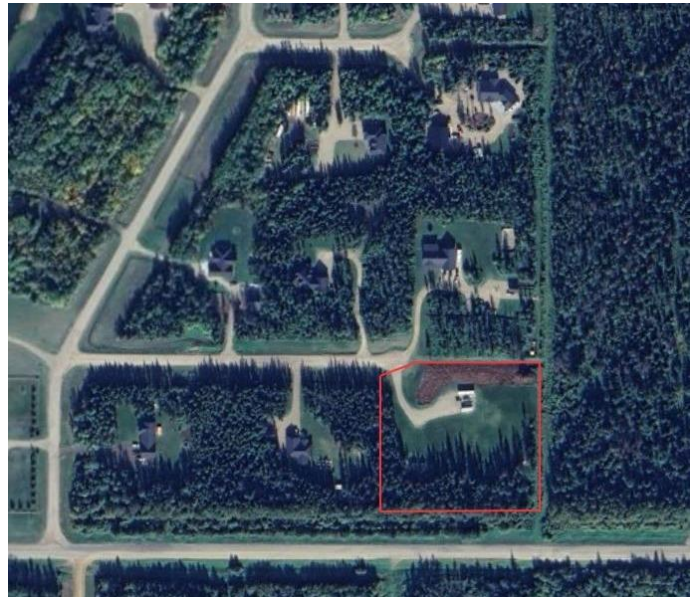
MLS® #	A2198035
Price	\$220,000
Bathrooms	0.00
Acres	3.16
Type	Land
Sub-Type	Residential Land
Status	Active

Community Information

Address	213 Pinnacle Blvd
Subdivision	NONE
City	La Crete
County	Mackenzie County
Province	Alberta
Postal Code	T0H2H0

Additional Information

Date Listed	February 28th, 2025
-------------	---------------------



Days on Market	79
Zoning	RCR3
Listing Details	
Listing Office	RE/MAX Grande Prairie

Data is supplied by Pillar 9â„¢ MLS® System. Pillar 9â„¢ is the owner of the copyright in its MLS® System. Data is deemed reliable but is not guaranteed accurate by Pillar 9â„¢. The trademarks MLS®, Multiple Listing Service® and the associated logos are owned by The Canadian Real Estate Association (CREA) and identify the quality of services provided by real estate professionals who are members of CREA. Used under license.