

# \$599,500 - 31 Rundlemere Place Ne, Calgary

MLS® #A2199451

**\$599,500**

3 Bedroom, 2.00 Bathroom, 1,371 sqft  
Residential on 0.16 Acres

Rundle, Calgary, Alberta

Welcome to this delightful bungalow with a NEW furnace and the possibility to add a SIDE ENTRANCE nestled on a peaceful cul-de-sac in the desirable community of Rundle.

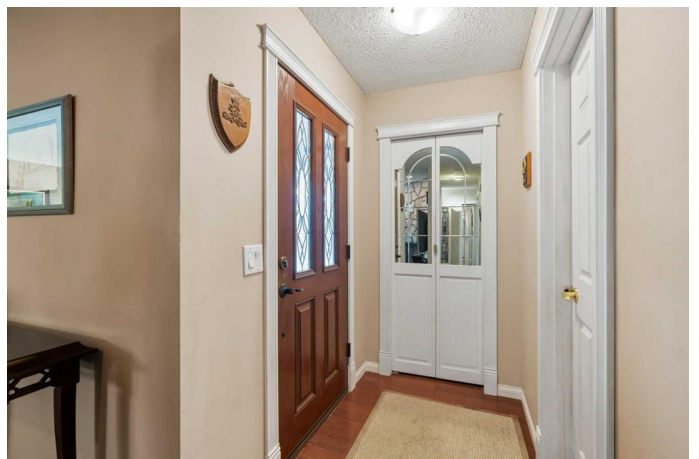
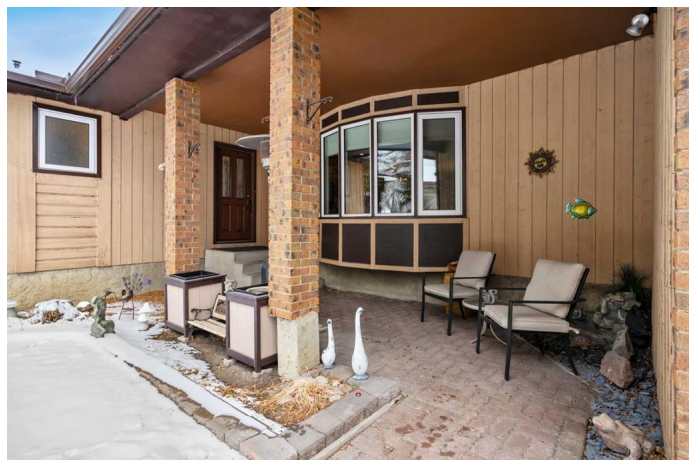
Conveniently located just moments away from a wide range of amenities, this home offers the perfect blend of comfort and practicality!

Walking in, you're greeted by a spacious living room, which serves as the heart of the home. Featuring a cozy gas fireplace, stunning hardwood floors, and large windows that fill the room with natural light, this space is ideal for both relaxing and entertaining guests.

Beside the living room is the kitchen and dining area, a generous, airy space that provides a wonderful view of the pristine backyard. This inviting area is perfect for preparing family meals and offers a seamless transition to outdoor living.

The primary suite is located at the front of the home, where it is bathed in natural light, creating a calm and peaceful atmosphere. It also boasts a convenient 2-piece ensuite, providing a private retreat for relaxation after a long day. Additionally, this floor includes two more spacious bedrooms, as well as a laundry room, making daily chores a breeze.

The backyard is a true highlight, featuring a large two-tiered deck, perfect for hosting BBQs or family gatherings. There is also plenty of



space for gardening enthusiasts to cultivate their green thumb and create a tranquil outdoor oasis.

The basement offers a large, open space ready for your personal touch. Whether you envision a home gym, office, or additional living space, this area provides endless possibilities to suit your needs.

Located in the community of Rundle, this home is just minutes away from the Peter Lougheed Hospital, LRT stations, and a variety of shops and restaurants. Its proximity to both the airport and downtown core ensures a convenient commute. This is a home you won't want to overlook!

Built in 1977

### **Essential Information**

|                |             |
|----------------|-------------|
| MLS® #         | A2199451    |
| Price          | \$599,500   |
| Bedrooms       | 3           |
| Bathrooms      | 2.00        |
| Full Baths     | 1           |
| Half Baths     | 1           |
| Square Footage | 1,371       |
| Acres          | 0.16        |
| Year Built     | 1977        |
| Type           | Residential |
| Sub-Type       | Detached    |
| Style          | Bungalow    |
| Status         | Active      |

### **Community Information**

|             |                        |
|-------------|------------------------|
| Address     | 31 Rundlemere Place Ne |
| Subdivision | Rundle                 |
| City        | Calgary                |
| County      | Calgary                |

Province Alberta  
Postal Code T1Y 3K4

### Amenities

Parking Spaces 2  
Parking Single Garage Attached  
# of Garages 1

### Interior

Interior Features Kitchen Island, No Smoking Home  
Appliances Dishwasher, Dryer, Microwave Hood Fan, Refrigerator, Stove(s), Washer  
Heating Forced Air  
Cooling None  
Fireplace Yes  
# of Fireplaces 1  
Fireplaces Living Room, Wood Burning  
Has Basement Yes  
Basement Partial, Partially Finished

### Exterior

Exterior Features Garden  
Lot Description Back Yard  
Roof Asphalt Shingle  
Construction Wood Siding  
Foundation Poured Concrete

### Additional Information

Date Listed April 1st, 2025  
Days on Market 5  
Zoning R-CG

### Listing Details

Listing Office eXp Realty

Data is supplied by Pillar 9â„¢ MLSÂ® System. Pillar 9â„¢ is the owner of the copyright in its MLSÂ® System. Data is deemed reliable but is not guaranteed accurate by Pillar 9â„¢. The trademarks MLSÂ®, Multiple Listing ServiceÂ® and the associated logos are owned by The Canadian Real Estate Association (CREA) and identify the quality of services provided by real estate professionals who are members of CREA. Used under license.