

# \$279,900 - 19408 B Twp Rd 464, Rural Camrose County

MLS® #A2201294

**\$279,900**

0 Bedroom, 0.00 Bathroom,  
Land on 5.39 Acres

NONE, Rural Camrose County, Alberta

Imagine living only 7 minutes east of Camrose, but having 5.39 acres to yourself! This acreage is adjacent to HWY 56, north of the Richard Pioneer Legacy Junction corner. SERVICED WITH CITY WATER!, power and natural gas to the property line. Paved most of the way, with a minor amount of gravel to enter the acreage. In a cul-de-sac which limits unwanted traffic. Build your dream in the country and enjoy your privacy, just a short drive from Camrose. Potential for a SECOND RESIDENCE (discretionary use). Two other lots are also available. Welcome home!

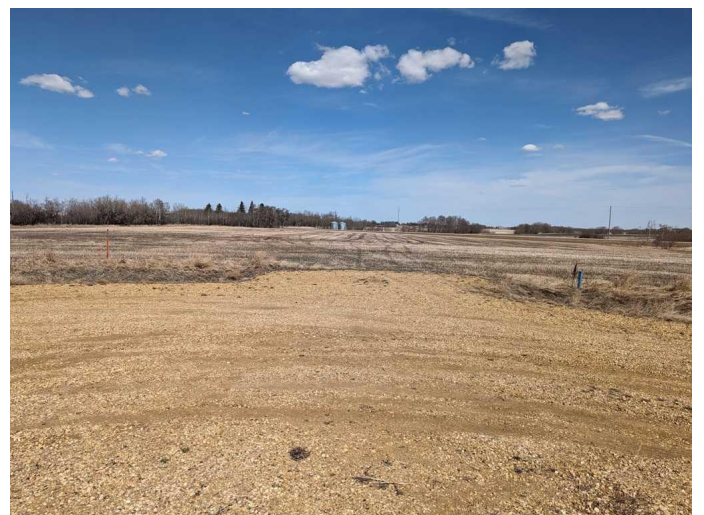


## Essential Information

MLS® #	A2201294
Price	\$279,900
Bathrooms	0.00
Acres	5.39
Type	Land
Sub-Type	Residential Land
Status	Active

## Community Information

Address	19408 B Twp Rd 464
Subdivision	NONE
City	Rural Camrose County
County	Camrose County
Province	Alberta
Postal Code	T0B2M2



## Amenities

Utilities See Remarks

## School Information

District Battle River Regional Division No. 31

## Additional Information

Date Listed March 10th, 2025

Days on Market 3

Zoning CR-2

## Listing Details

Listing Office Home-Time Realty

Data is supplied by Pillar 9â„¸ MLSÂ® System. Pillar 9â„¸ is the owner of the copyright in its MLSÂ® System. Data is deemed reliable but is not guaranteed accurate by Pillar 9â„¸. The trademarks MLSÂ®, Multiple Listing ServiceÂ® and the associated logos are owned by The Canadian Real Estate Association (CREA) and identify the quality of services provided by real estate professionals who are members of CREA. Used under license.