

# \$1,700,000 - 45002 Range Rd 281, Rural Cardston County

---

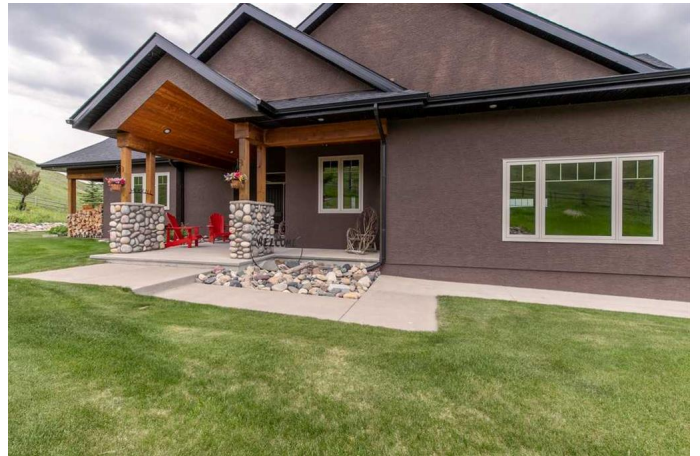
MLS® #A2201910

**\$1,700,000**

3 Bedroom, 3.00 Bathroom, 2,593 sqft  
Residential on 85.00 Acres

NONE, Rural Cardston County, Alberta

This is the ULTIMATE acreage property. A luxury home with landscaping and underground sprinklers around the residence and then more than 80 acres of native pasture on the Waterton River across from the Waterton Reservoir. Private, pristine, picture perfect with prairie and mountain views. This property's west edge is the Waterton River. Truly idyllic. People come from all over the world to vacation here. Come make this where you live! Whether you love water recreation on the Waterton Reservoir, skiing at Castle Ski Resort, hiking in the Castle Wildland Provincial Park or Waterton Lakes National Park, fishing the rivers, or becoming part of the small village life of nearby Hill Spring and Glenwood, it is all close by. This property is set up for the horse lover with tack room, corrals, round pen, and wind shelters. Descriptions will not suffice on the house! Check out the virtual tour and photos to be overwhelmed by this high end home that has been meticulously cared for. The functionality of the floor plan is matched by the beautiful form. Every detail has been well thought out and the Gemstone lighting is the jewel on the crown. The sun room with the fireplace is enough to win anyone over. This is a legacy property. This quality and comfort and beautiful setting are seldom found all in one property. Everything is ready for someone to live their dream. The furnace and the air conditioner are new! Check out the



Virtual Tour and the Drone video. Call your favourite realtor and come imagine your new life here.

Built in 2007

### Essential Information

|                |   |
|----------------|---|
| MLS® #         | A2201910                                  |
| Price          | \$1,700,000                               |
| Bedrooms       | 3   |
| Bathrooms      | 3.00                                      |
| Full Baths     | 2   |
| Half Baths     | 1   |
| Square Footage | 2,593                                     |
| Acres          | 85.00                                     |
| Year Built     | 2007                                      |
| Type           | Residential                               |
| Sub-Type       | Detached                                  |
| Style          | 1 and Half Storey, Acreage with Residence |
| Status         | Active                                    |

### Community Information

|             |                       |
|-------------|-----------------------|
| Address     | 45002 Range Rd 281    |
| Subdivision | NONE                  |
| City        | Rural Cardston County |
| County      | Cardston County       |
| Province    | Alberta               |
| Postal Code | T0K1E0                |

### Amenities

|                |                           |
|----------------|---------------------------|
| Parking Spaces | 10                        |
| Parking        | Triple Garage Attached    |
| # of Garages   | 3                         |
| Waterfront     | River Access, River Front |

### Interior

|                   |  |
|-------------------|--|
| Interior Features | Central Vacuum, No Animal Home, No Smoking Home, Pantry, Walk-In Closet(s) |
| Appliances        | Dishwasher, Garage Control(s), Gas Range, Microwave, Range Hood,           |

|                 |  |
|-----------------|--|
|                 | Refrigerator, Washer/Dryer, Water Conditioner, Water Softener, Central Air Conditioner, Disposal |
| Heating         | Central, Natural Gas   |
| Cooling         | Central Air  |
| Fireplace       | Yes  |
| # of Fireplaces | 3  |
| Fireplaces      | Gas Starter, Glass Doors, Living Room, Stone, Wood Burning, Gas Log, Sun Room                    |
| Has Basement    | Yes  |
| Basement        | Finished, Full   |

## Exterior

|                   |   |
|-------------------|---|
| Exterior Features | Lighting  |
| Lot Description   | Landscaped, Lawn, Native Plants, Private, Pasture, Secluded |
| Roof              | Asphalt Shingle   |
| Construction      | ICFs (Insulated Concrete Forms), Stone, Stucco              |
| Foundation        | ICF Block   |

## Additional Information

|                |                  |
|----------------|------------------|
| Date Listed    | March 13th, 2025 |
| Days on Market | 154              |
| Zoning         | AG               |

## Listing Details

|                |  |
|----------------|--|
| Listing Office | Century 21 Foothills South Real Estate |
|----------------|--|

Data is supplied by Pillar 9â„¢ MLSÂ® System. Pillar 9â„¢ is the owner of the copyright in its MLSÂ® System. Data is deemed reliable but is not guaranteed accurate by Pillar 9â„¢. The trademarks MLSÂ®, Multiple Listing ServiceÂ® and the associated logos are owned by The Canadian Real Estate Association (CREA) and identify the quality of services provided by real estate professionals who are members of CREA. Used under license.