

\$259,900 - 2, 88 Sunrise Street Se, Medicine Hat

MLS® #A2206548

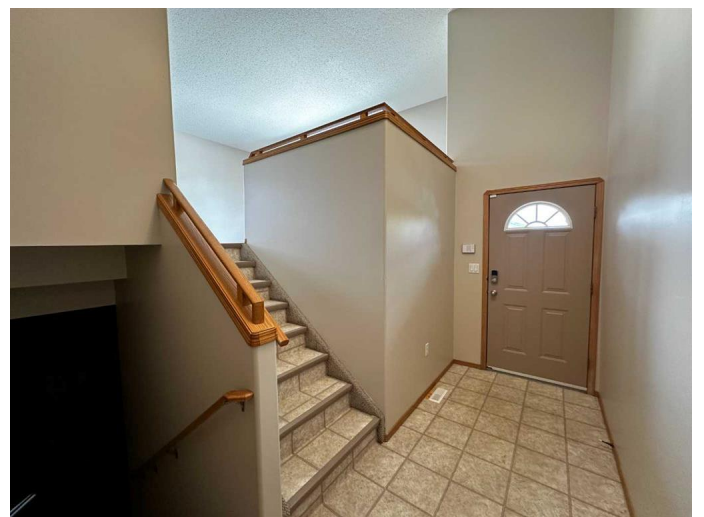
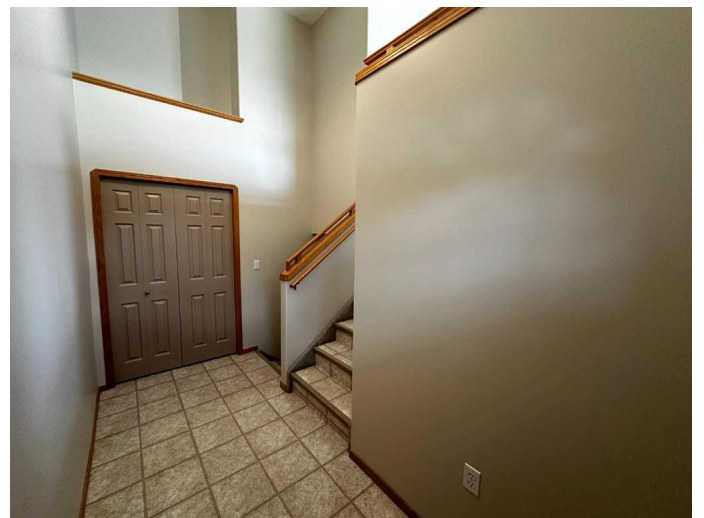
\$259,900

3 Bedroom, 2.00 Bathroom, 756 sqft
Residential on 0.14 Acres

SW Southridge, Medicine Hat, Alberta

This lovely and bright four-plex condo unit in the sought after Sunrise community is move-in ready! Perfectly located near Saamis Rotary Park, this home offers easy access to walking paths, local amenities, and the newest school in the city. The area is ideal for families or anyone seeking a peaceful and connected neighbourhood. This freshly painted home features a spacious and well-designed layout. Step inside to the large and bright front entry, featuring a double closet and room for additional storage. The main floor has beautiful new flooring and a spacious living room, versatile enough to serve as both a relaxing living area and home office. The open kitchen offers plenty of storage space, including a pantry. The dining area opens up to a covered deck with convenient storage underneath. The main floor also includes a sizeable storage room, and powder room. Downstairs, youâ€™ll find three generously sized bedrooms, a 4 pc bath, and a laundry room for added convenience. The low-maintenance yard with a maintenance-free fence provides a private space to enjoy outdoors without the hassle. This home is perfect for those seeking convenience and peace of mind. Don't miss out on this incredible opportunityâ€”this unit is move-in ready and waiting for you to call it home or perfect for a revenue Buyer!! No age restrictions, and pets are welcome!

Built in 2001



Essential Information

| | |
|----------------|---------------|
| MLS® # | A2206548 |
| Price | \$259,900 |
| Bedrooms | 3 |
| Bathrooms | 2.00 |
| Full Baths | 1 |
| Half Baths | 1 |
| Square Footage | 756 |
| Acres | 0.14 |
| Year Built | 2001 |
| Type | Residential |
| Sub-Type | Row/Townhouse |
| Style | Bi-Level |
| Status | Active |

Community Information

| | |
|-------------|-------------------------|
| Address | 2, 88 Sunrise Street Se |
| Subdivision | SW Southridge |
| City | Medicine Hat |
| County | Medicine Hat |
| Province | Alberta |
| Postal Code | T1B 4N9 |

Amenities

| | |
|----------------|-----------------------------|
| Amenities | Parking |
| Parking Spaces | 2 |
| Parking | Assigned, Off Street, Stall |

Interior

| | |
|-------------------|---|
| Interior Features | High Ceilings, Laminate Counters |
| Appliances | Dishwasher, Dryer, Range Hood, Refrigerator, Stove(s), Washer, Window Coverings |
| Heating | Forced Air, Natural Gas |
| Cooling | Central Air |
| Has Basement | Yes |
| Basement | Finished, Full |

Exterior

| | |
|-------------------|------|
| Exterior Features | None |
|-------------------|------|

| | |
|-----------------|--------------------------|
| Lot Description | Back Lane, Back Yard |
| Roof | Asphalt Shingle |
| Construction | Vinyl Siding, Wood Frame |
| Foundation | Poured Concrete |

Additional Information

| | |
|----------------|-----------------|
| Date Listed | April 1st, 2025 |
| Days on Market | 3 |
| Zoning | R-MD |

Listing Details

| | |
|----------------|--------------------------|
| Listing Office | RIVER STREET REAL ESTATE |
|----------------|--------------------------|

Data is supplied by Pillar 9â,,ç MLSÂ® System. Pillar 9â,,ç is the owner of the copyright in its MLSÂ® System. Data is deemed reliable but is not guaranteed accurate by Pillar 9â,,ç. The trademarks MLSÂ®, Multiple Listing ServiceÂ® and the associated logos are owned by The Canadian Real Estate Association (CREA) and identify the quality of services provided by real estate professionals who are members of CREA. Used under license.