

\$658,250 - 20 Lewiston Drive Ne, Calgary

MLS® #A2206671

\$658,250

4 Bedroom, 3.00 Bathroom, 1,880 sqft
Residential on 0.06 Acres

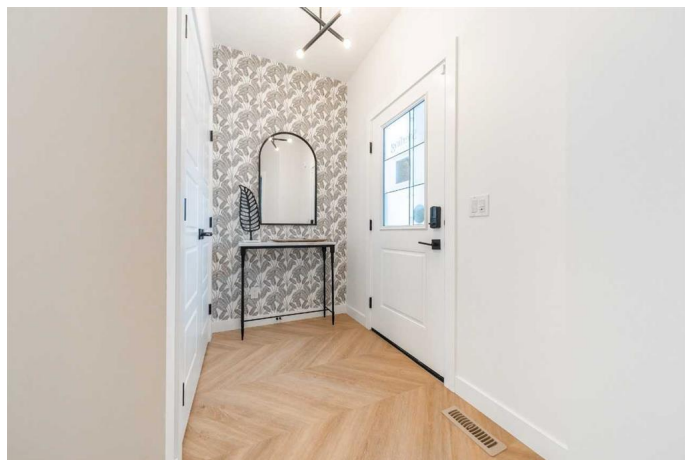
Lewisburg, Calgary, Alberta

Introducing the Jade â€” a beautifully designed 2-storey home with exceptional features! The chef-inspired kitchen comes complete with sleek stainless-steel appliances, a chimney hood fan, and a spice kitchen with a gas range. The main floor offers a full bath and a bedroom, while the basement boasts a 9' ceiling and a roughed-in 2-bedroom with a separate side entrance. The luxurious ensuite includes dual sinks, a fiberglass shower with tile surround, and a barn-style door. Enjoy quartz countertops throughout, paint-grade railings with iron spindles, a gas line for your BBQ, and back-alley access. The Jade is the perfect blend of function and elegance! Photos are a representative.

Built in 2024

Essential Information

MLS® #	A2206671
Price	\$658,250
Bedrooms	4
Bathrooms	3.00
Full Baths	3
Square Footage	1,880
Acres	0.06
Year Built	2024
Type	Residential
Sub-Type	Detached
Style	2 Storey



Status Active

Community Information

Address 20 Lewiston Drive Ne
Subdivision Lewisburg
City Calgary
County Calgary
Province Alberta
Postal Code T3P2J6

Amenities

Parking Spaces 4
Parking Parking Pad

Interior

Interior Features Double Vanity, Open Floorplan, Pantry, Separate Entrance, Smart Home, Tankless Hot Water, Vaulted Ceiling(s), Walk-In Closet(s)
Appliances Dishwasher, Electric Range, Gas Range, Microwave, Range Hood, Refrigerator, Tankless Water Heater
Heating Forced Air, Natural Gas
Cooling None
Has Basement Yes
Basement Full, Unfinished

Exterior

Exterior Features None
Lot Description Back Lane
Roof Asphalt Shingle
Construction Stone, Vinyl Siding, Wood Frame
Foundation Poured Concrete

Additional Information

Date Listed March 31st, 2025
Days on Market 13
Zoning TBD

Listing Details

Listing Office Bode Platform Inc.

Data is supplied by Pillar 9â„¢ MLSÂ® System. Pillar 9â„¢ is the owner of the copyright in its MLSÂ® System. Data is deemed reliable but is not guaranteed accurate by Pillar 9â„¢. The trademarks MLSÂ®, Multiple Listing ServiceÂ® and

the associated logos are owned by The Canadian Real Estate Association (CREA) and identify the quality of services provided by real estate professionals who are members of CREA. Used under license.