

\$1,300,000 - 412 6 Street Ne, Calgary

MLS® #A2206826

\$1,300,000

4 Bedroom, 2.00 Bathroom, 984 sqft
Residential on 0.11 Acres

Bridgeland/Riverside, Calgary, Alberta

FULL DUPLEX. 410 and 412 on a single title (412 6 Street NE). Design of this property makes it very easy to have basement suites and with the RC-G zoning it can be legalized basement suites. Both sides are currently rented to two very long term tenants (30+ years) who want to stay. The inside is dated but in phenomenal condition. Parking pad accommodates up to 4 vehicles. Walking distance to down town.

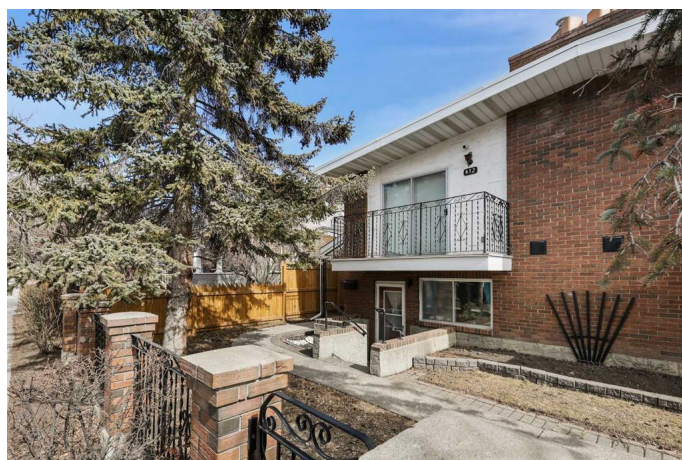
Built in 1977

Essential Information

MLS® #	A2206826
Price	\$1,300,000
Bedrooms	4
Bathrooms	2.00
Full Baths	2
Square Footage	984
Acres	0.11
Year Built	1977
Type	Residential
Sub-Type	Duplex
Style	Side by Side, Bungalow
Status	Active

Community Information

Address	412 6 Street Ne
Subdivision	Bridgeland/Riverside



City	Calgary
County	Calgary
Province	Alberta
Postal Code	T2E 3Y4

Amenities

Parking Spaces	4
Parking	Parking Pad

Interior

Interior Features	See Remarks
Appliances	Electric Stove, Range Hood, Refrigerator, Washer/Dryer
Heating	Central
Cooling	None
Fireplace	Yes
# of Fireplaces	2
Fireplaces	Gas
Has Basement	Yes
Basement	Finished, Full, Walk-Up To Grade

Exterior

Exterior Features	None
Lot Description	Rectangular Lot, See Remarks
Roof	Tar/Gravel
Construction	Brick, Stucco, Wood Frame
Foundation	Poured Concrete

Additional Information

Date Listed	March 29th, 2025
Days on Market	7
Zoning	R-CG

Listing Details

Listing Office	RE/MAX House of Real Estate
----------------	-----------------------------

Data is supplied by Pillar 9â„¢ MLSÂ® System. Pillar 9â„¢ is the owner of the copyright in its MLSÂ® System. Data is deemed reliable but is not guaranteed accurate by Pillar 9â„¢. The trademarks MLSÂ®, Multiple Listing ServiceÂ® and the associated logos are owned by The Canadian Real Estate Association (CREA) and identify the quality of services provided by real estate professionals who are members of CREA. Used under license.