

# \$1,150,000 - 240 Prairie Rose Place S, Lethbridge

MLS® #A2206916

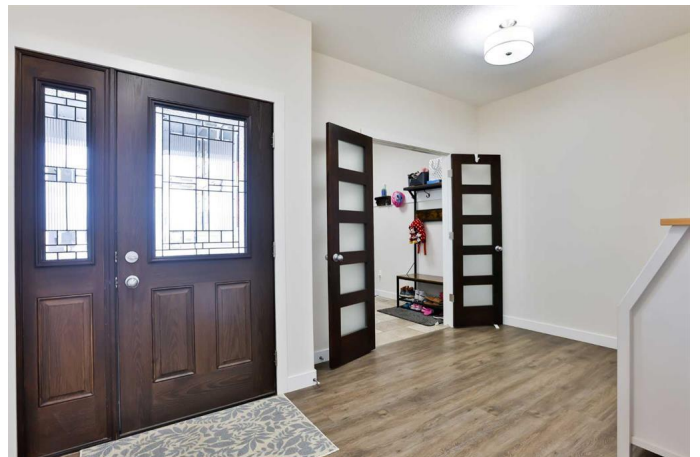
**\$1,150,000**

7 Bedroom, 4.00 Bathroom, 3,148 sqft

Residential on 0.33 Acres

Arbour Ridge, Lethbridge, Alberta

This is the first time on the market for this beautiful, executive home. Three words come to mind to describe this home: elegant, spacious, practical. With 7 bedrooms (all with walk-in closets), 3.5 baths and 4 living room areas (plus main floor sitting area off the kitchen) there is plenty of room for everyone to have quiet time! The amazing and spacious kitchen with the 10' unobstructed waterfall island will be a delight for the chef in the family, or those that love to entertain. On the main floor, you'll find the living room facing south with large windows to let in the beautiful sunlight, which spills over in to the kitchen and dining area. On the second floor, also facing south, you'll find the primary suite. On a clear day the unobstructed view of the mountains, from the primary suite, are peaceful and serene. This beautiful home comes with many bonus options: double sided fireplace in the primary suite/ensuite, HUGE walk-in closet in the primary suite, multiple laundry locations, wet bar in the lower level family room, sound system throughout the home and back patio, EV charger in the triple garage, triple glazed windows, large side patio with gas line and OH door to the garage, front & back UG sprinklers and more! The location of this home in a cul-de-sac allows the children to play out front without the concern of traffic. There is a large back yard as well, if that's your preference! And of course, I would be amiss if I forgot to mention you have no neighbors behind you! This amazing home



is close to shopping and restaurants, with only a short stroll to walking trails and the coulees. Possession is negotiable. Please see the Supplements tab for a list of home features and call your agent to book a showing today!

Built in 2016

### Essential Information

|                |             |
|----------------|-------------|
| MLS® #         | A2206916    |
| Price          | \$1,150,000 |
| Bedrooms       | 7           |
| Bathrooms      | 4.00        |
| Full Baths     | 3           |
| Half Baths     | 1           |
| Square Footage | 3,148       |
| Acres          | 0.33        |
| Year Built     | 2016        |
| Type           | Residential |
| Sub-Type       | Detached    |
| Style          | 2 Storey    |
| Status         | Active      |

### Community Information

|             |                          |
|-------------|--------------------------|
| Address     | 240 Prairie Rose Place S |
| Subdivision | Arbour Ridge             |
| City        | Lethbridge               |
| County      | Lethbridge               |
| Province    | Alberta                  |
| Postal Code | T1K 5V7                  |

### Amenities

|                |  |
|----------------|--|
| Parking Spaces | 7  |
| Parking        | Heated Garage, Off Street, Oversized, Triple Garage Attached, In Garage Electric Vehicle Charging Station(s) |
| # of Garages   | 3  |

### Interior

|                   |  |
|-------------------|--|
| Interior Features | Ceiling Fan(s), Central Vacuum, Double Vanity, Granite Counters, |
|-------------------|--|

|                 |   |
|-----------------|---|
|                 | Kitchen Island, No Animal Home, No Smoking Home, Pantry, Soaking Tub, Sump Pump(s), Walk-In Closet(s), Wet Bar, Tray Ceiling(s)         |
| Appliances      | Central Air Conditioner, Dishwasher, Dryer, Garage Control(s), Gas Range, Microwave, Range Hood, Refrigerator, Washer, Window Coverings |
| Heating         | Forced Air  |
| Cooling         | Central Air   |
| Fireplace       | Yes   |
| # of Fireplaces | 2   |
| Fireplaces      | Gas, Master Bedroom, Other  |
| Has Basement    | Yes   |
| Basement        | Finished, Full  |

## Exterior

|                   |  |
|-------------------|--|
| Exterior Features | BBQ gas line, Private Yard   |
| Lot Description   | Back Yard, Cul-De-Sac, Front Yard, Landscaped, Lawn, Low Maintenance Landscape, No Neighbours Behind, See Remarks, Street Lighting, Underground Sprinklers |
| Roof              | Asphalt Shingle  |
| Construction      | Cement Fiber Board, Stone  |
| Foundation        | Poured Concrete  |

## Additional Information

|                |                  |
|----------------|------------------|
| Date Listed    | March 30th, 2025 |
| Days on Market | 18               |
| Zoning         | DC               |

## Listing Details

|                |            |
|----------------|------------|
| Listing Office | CIR REALTY |
|----------------|------------|

Data is supplied by Pillar 9â„¢ MLS® System. Pillar 9â„¢ is the owner of the copyright in its MLS® System. Data is deemed reliable but is not guaranteed accurate by Pillar 9â„¢. The trademarks MLS®, Multiple Listing Service® and the associated logos are owned by The Canadian Real Estate Association (CREA) and identify the quality of services provided by real estate professionals who are members of CREA. Used under license.