

\$119,900 - #1, 71064 Township Road 722, Rural Grande Prairie No. 1, County of

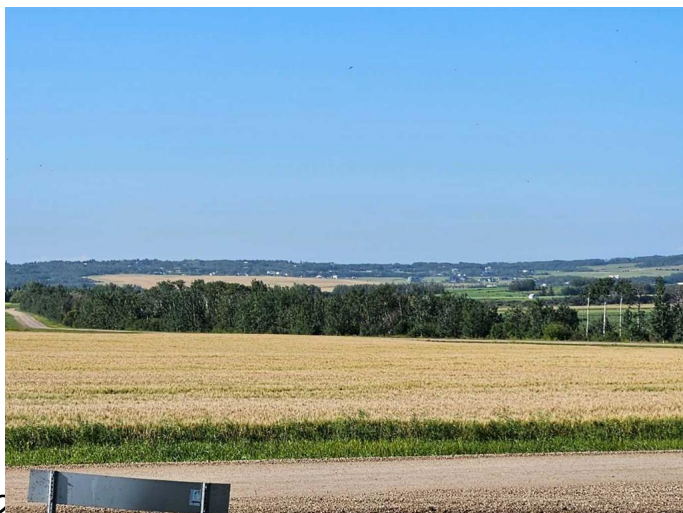
MLS® #A2207649

\$119,900

0 Bedroom, 0.00 Bathroom,
Land on 3.93 Acres

Lake Point Properties, Rural Grande Prairie
No. 1, County of, Alberta

Discover the perfect opportunity to build your dream home on this expansive 3.93-acre property zoned CR-2. Nestled in a peaceful and scenic setting, this vacant land offers ample space for a custom-built residence, outbuildings, gardens, or even a small hobby farm. Whether you're looking to create a private retreat, a homestead, or an investment opportunity, this land offers endless potential. Enjoy the beauty of nature while staying close to modern conveniences. Don't miss this rare chance to own a piece of land where your vision can come to life!



Essential Information

| | |
|-----------|------------------|
| MLS® # | A2207649 |
| Price | \$119,900 |
| Bathrooms | 0.00 |
| Acres | 3.93 |
| Type | Land |
| Sub-Type | Residential Land |
| Status | Active |

Community Information

| | |
|-------------|---------------------------------------|
| Address | #1, 71064 Township Road 722 |
| Subdivision | Lake Point Properties |
| City | Rural Grande Prairie No. 1, County of |

| | |
|-------------|---------------------------------|
| County | Grande Prairie No. 1, County of |
| Province | Alberta |
| Postal Code | T8X 4K5 |

Additional Information

| | |
|----------------|-----------------|
| Date Listed | April 1st, 2025 |
| Days on Market | 10 |
| Zoning | CR-2 |

Listing Details

| | |
|----------------|-----------------------|
| Listing Office | RE/MAX Grande Prairie |
|----------------|-----------------------|

Data is supplied by Pillar 9â„¸ MLSÂ® System. Pillar 9â„¸ is the owner of the copyright in its MLSÂ® System. Data is deemed reliable but is not guaranteed accurate by Pillar 9â„¸. The trademarks MLSÂ®, Multiple Listing ServiceÂ® and the associated logos are owned by The Canadian Real Estate Association (CREA) and identify the quality of services provided by real estate professionals who are members of CREA. Used under license.