

\$449,900 - 4, 270 Couleesprings Terrace S, Lethbridge

MLS® #A2207663

\$449,900

3 Bedroom, 3.00 Bathroom, 1,669 sqft
Residential on 0.00 Acres

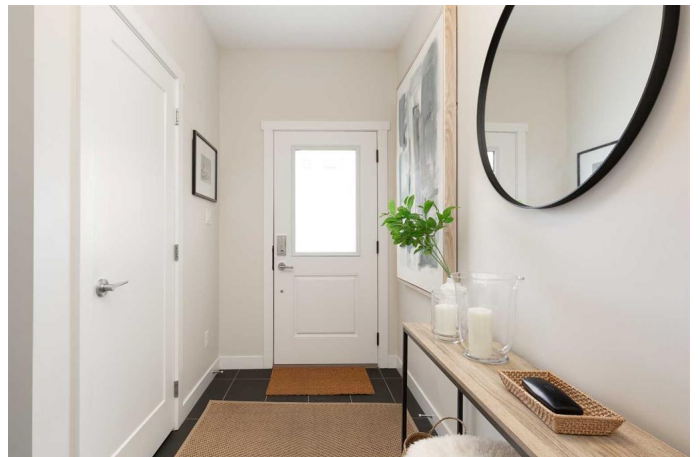
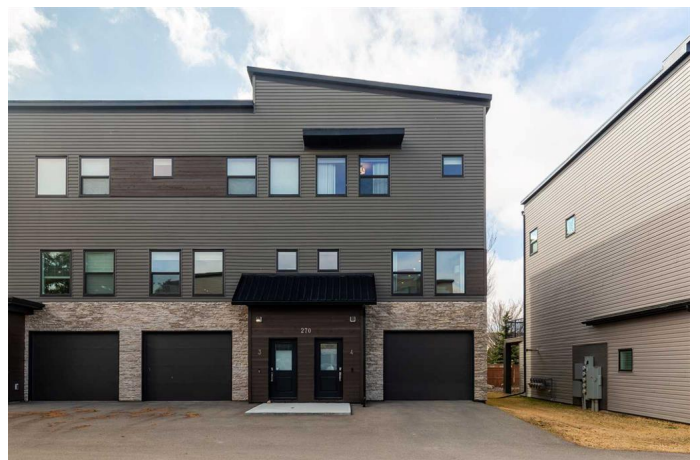
Southgate, Lethbridge, Alberta

Located in Block 19, this condo offers comfortable living with convenient access to excellent amenities. Enter through a welcoming entryway that leads to the double-attached garage, which includes ample storage. The open living room is filled with natural light, features custom window coverings, and boasts a striking glass feature wall. The kitchen has been upgraded with floor-to-ceiling cabinets, stainless steel appliances, and solid-surface countertops. Additionally, the dining room provides access to the back deck, completing an open-concept layout that is ideal for entertaining. The primary suite, located upstairs, includes a 3-piece en-suite and walk-in closet. There are also two additional bedrooms, a 4-piece bathroom, and laundry facilities on the same level. This property is conveniently situated near local amenities, parks, walking paths, and grocery and home improvement stores.

Built in 2018

Essential Information

MLS® #	A2207663
Price	\$449,900
Bedrooms	3
Bathrooms	3.00
Full Baths	2
Half Baths	1
Square Footage	1,669



Acres	0.00
Year Built	2018
Type	Residential
Sub-Type	Row/Townhouse
Style	Townhouse
Status	Active

Community Information

Address	4, 270 Couleesprings Terrace S
Subdivision	Southgate
City	Lethbridge
County	Lethbridge
Province	Alberta
Postal Code	T1K 5P1

Amenities

Amenities	Parking
Parking Spaces	2
Parking	Double Garage Attached, Garage Door Opener, Garage Faces Front, Heated Garage, Insulated, Tandem
# of Garages	2

Interior

Interior Features	Closet Organizers, High Ceilings, Kitchen Island, No Smoking Home, Open Floorplan, Quartz Counters, Storage, Vinyl Windows
Appliances	Dishwasher, Dryer, Garage Control(s), Refrigerator, Stove(s), Washer, Window Coverings
Heating	Forced Air
Cooling	Central Air
Basement	None

Exterior

Exterior Features	Other
Lot Description	Landscaped, Lawn, Many Trees, Paved
Roof	Flat Torch Membrane
Construction	Mixed, Vinyl Siding, Wood Frame
Foundation	Poured Concrete

Additional Information

Date Listed	April 3rd, 2025
-------------	-----------------

Days on Market 4
Zoning R-75

Listing Details

Listing Office Lethbridge Real Estate.com

Data is supplied by Pillar 9â„¢ MLSÂ® System. Pillar 9â„¢ is the owner of the copyright in its MLSÂ® System. Data is deemed reliable but is not guaranteed accurate by Pillar 9â„¢. The trademarks MLSÂ®, Multiple Listing ServiceÂ® and the associated logos are owned by The Canadian Real Estate Association (CREA) and identify the quality of services provided by real estate professionals who are members of CREA. Used under license.