

\$539,900 - 9122 Lakeshore Drive, Grande Prairie

MLS® #A2208828

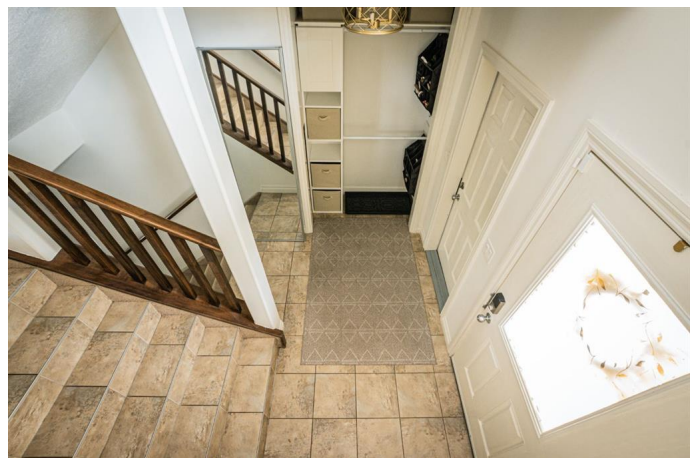
\$539,900

4 Bedroom, 3.00 Bathroom, 1,566 sqft

Residential on 0.16 Acres

Crystal Lake Estates, Grande Prairie, Alberta

Nestled in the prestigious Crystal Lake Estates neighbourhood, just steps from scenic walking trails and directly across from the serene lake, this stunning modified bi-level home offers the perfect blend of luxury and lifestyle. With undeniable curb appeal, a triple attached garage, and brick exterior finishes, this residence is a true showstopper from the moment you arrive. Step inside to discover a beautifully appointed open-concept main floor, where natural light pours into the bright living room featuring a cozy gas fireplace. The chef-inspired kitchen is designed with function and style in mind, boasting ample cabinetry, generous counter space, a central island with seating, a walk-in pantry, and modern tile backsplash. The spacious dining area offers direct access to the backyard, ideal for entertaining or quiet evenings at home. Two well-sized bedrooms and a full bathroom complete the main level, while the upper-level retreat is reserved for the expansive primary suite. This private oasis showcases a spa-inspired ensuite with dual vanities, a luxurious corner soaker tub, and a separate shower. Downstairs, the fully finished basement provides exceptional versatility with a large secondary living area, dedicated home office, fourth bedroom, and an additional full bathroom, perfect for guests or growing families. The massive, fully fenced backyard is a true outdoor haven, fully landscaped with plenty of room to relax or play, and highlighted by a custom firepit for cozy evenings under the



stars. This home is a rare gem in a sought-after location. Book your showing today!

Built in 2006

Essential Information

MLS® #	A2208828
Price	\$539,900
Bedrooms	4
Bathrooms	3.00
Full Baths	3
Square Footage	1,566
Acres	0.16
Year Built	2006
Type	Residential
Sub-Type	Detached
Style	Modified Bi-Level
Status	Active

Community Information

Address	9122 Lakeshore Drive
Subdivision	Crystal Lake Estates
City	Grande Prairie
County	Grande Prairie
Province	Alberta
Postal Code	T8X 8C9

Amenities

Parking Spaces	6
Parking	Triple Garage Attached
# of Garages	3

Interior

Interior Features	Kitchen Island, Open Floorplan, Pantry, See Remarks
Appliances	Dishwasher, Dryer, Garage Control(s), Microwave, Refrigerator, Washer, Stove(s)
Heating	Forced Air
Cooling	None

Fireplace	Yes
# of Fireplaces	1
Fireplaces	Gas
Has Basement	Yes
Basement	Finished, Full

Exterior

Exterior Features	None
Lot Description	Landscaped
Roof	Asphalt Shingle
Construction	Brick, Vinyl Siding
Foundation	Poured Concrete

Additional Information

Date Listed	July 28th, 2025
Days on Market	3
Zoning	RG

Listing Details

Listing Office	RE/MAX Grande Prairie
----------------	-----------------------

Data is supplied by Pillar 9â„¢ MLS® System. Pillar 9â„¢ is the owner of the copyright in its MLS® System. Data is deemed reliable but is not guaranteed accurate by Pillar 9â„¢. The trademarks MLS®, Multiple Listing Service® and the associated logos are owned by The Canadian Real Estate Association (CREA) and identify the quality of services provided by real estate professionals who are members of CREA. Used under license.