

# \$205,000 - 16 Canyon Creek Drive Sw, Medicine Hat

MLS® #A2209628

**\$205,000**

0 Bedroom, 0.00 Bathroom,  
Land on 0.40 Acres

Canyon Creek, Medicine Hat, Alberta

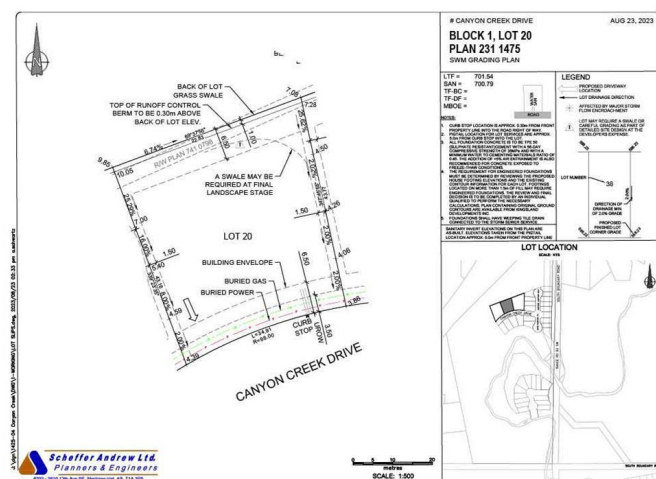
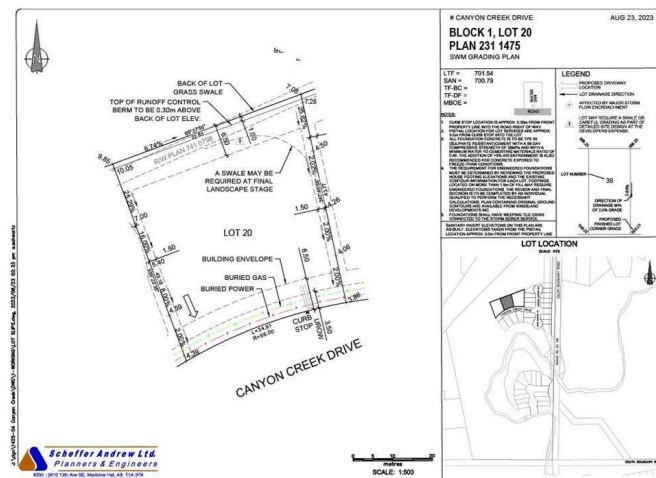
Welcome to your perfect canvas in Canyon Creek! These ready-to-build residential lots offer up to half an acre of prime real estate, nestled in a serene and picturesque neighborhood. Imagine waking up to the tranquility of beautiful surroundings, with a stunning prairie backdrop that offers a sense of openness. The peaceful ambiance of Canyon Creek is ideal for your dream home, whether you envision a cozy retreat or an expansive estate. With ample space to create the home you've always desired, these lots provide the perfect opportunity to blend modern living with nature's charm. Embrace the potential of this exceptional property and turn your dream into reality in one of the area's most desirable locations. \*Includes surveying and plot plan\*

## Essential Information

MLS® #	A2209628
Price	\$205,000
Bathrooms	0.00
Acres	0.40
Type	Land
Sub-Type	Residential Land
Status	Active

## Community Information

Address 16 Canyon Creek Drive Sw



Subdivision	Canyon Creek
City	Medicine Hat
County	Medicine Hat
Province	Alberta
Postal Code	T1B 0B2

### **Additional Information**

Date Listed	April 8th, 2025
Days on Market	132
Zoning	R-LD

### **Listing Details**

Listing Office	EXP REALTY
----------------	------------

Data is supplied by Pillar 9â„¢ MLSÂ® System. Pillar 9â„¢ is the owner of the copyright in its MLSÂ® System. Data is deemed reliable but is not guaranteed accurate by Pillar 9â„¢. The trademarks MLSÂ®, Multiple Listing ServiceÂ® and the associated logos are owned by The Canadian Real Estate Association (CREA) and identify the quality of services provided by real estate professionals who are members of CREA. Used under license.