

\$519,000 - 286 Ave Foothills County Avenue, Rural Foothills County

MLS® #A2209895

\$519,000

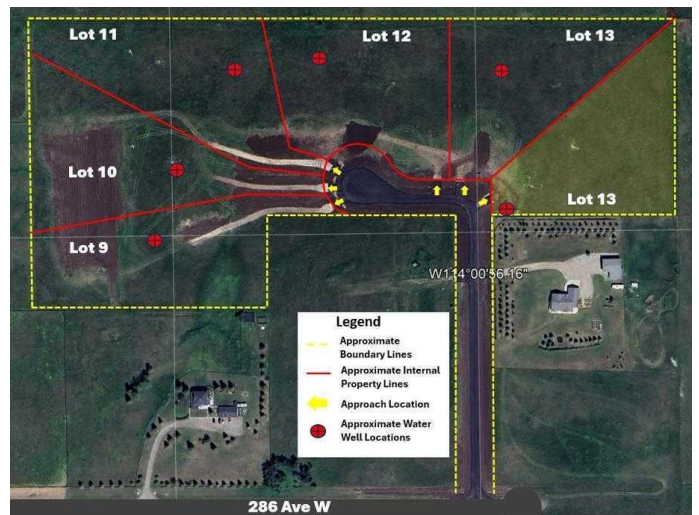
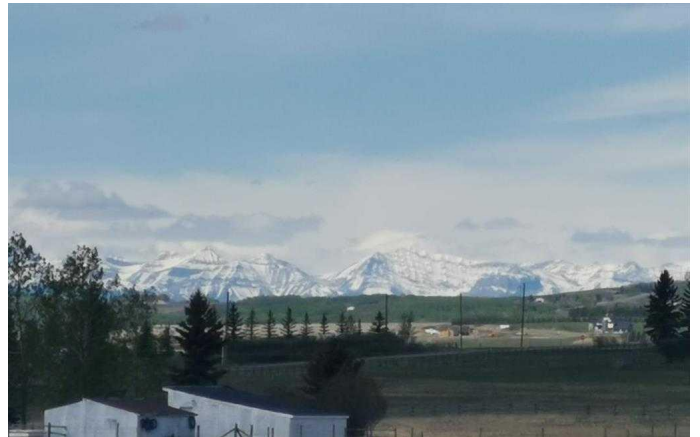
0 Bedroom, 0.00 Bathroom,
Land on 4.08 Acres

NONE, Rural Foothills County, Alberta

<<< G.S.T. INCLUDED IN PRICE >>>

Thinking of building your dream home

Come and see Peaks View Estates !! Offering lots 10 or 11 - located west of the hamlet of De Winton. Stunning mountain views in this peaceful tranquil setting. Close to Calgary and Okotoks (10 mins.) and all the amenities they have to offer. Favorable architectural guidelines (available upon request) will ensure Peaks View Estates will be a desirable community to call home. Each lot to be connected to and serviced by an on-site water well, natural gas and underground electric power. Enjoy country living at its finest !!



Essential Information

| | |
|-----------|------------------|
| MLS® # | A2209895 |
| Price | \$519,000 |
| Bathrooms | 0.00 |
| Acres | 4.08 |
| Type | Land |
| Sub-Type | Residential Land |
| Status | Active |

Community Information

| | |
|-------------|---------------------------------|
| Address | 286 Ave Foothills County Avenue |
| Subdivision | NONE |
| City | Rural Foothills County |

| | |
|-------------|------------------|
| County | Foothills County |
| Province | Alberta |
| Postal Code | T1S3M5 |

Additional Information

| | |
|----------------|-----------------|
| Date Listed | April 8th, 2025 |
| Days on Market | 37 |
| Zoning | cr |

Listing Details

| | |
|----------------|------------------------------|
| Listing Office | TREC The Real Estate Company |
|----------------|------------------------------|

Data is supplied by Pillar 9â„¢ MLSÂ® System. Pillar 9â„¢ is the owner of the copyright in its MLSÂ® System. Data is deemed reliable but is not guaranteed accurate by Pillar 9â„¢. The trademarks MLSÂ®, Multiple Listing ServiceÂ® and the associated logos are owned by The Canadian Real Estate Association (CREA) and identify the quality of services provided by real estate professionals who are members of CREA. Used under license.