

\$619,900 - 108 Waterford Way, Chestermere

MLS® #A2210051

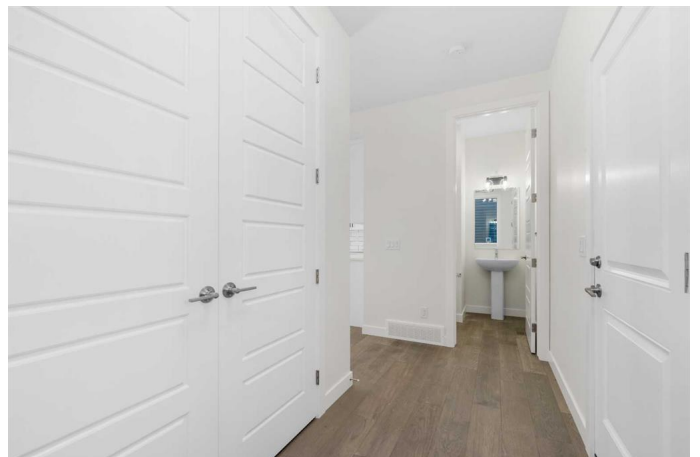
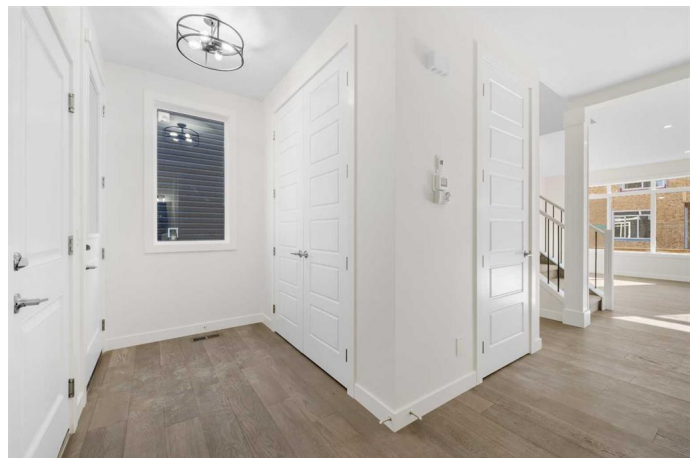
\$619,900

3 Bedroom, 3.00 Bathroom, 1,564 sqft

Residential on 0.06 Acres

NONE, Chestermere, Alberta

Brand New Home | Never Lived In | West Facing | Semi-Detached | 1,564 SqFt | 3-Bedrooms | 2.5 Bathrooms | Open Floor Plan | Sparkling Kitchen | Quartz Countertops | Full Height Cabinets | Black Hardware | Kitchen Island | Pantry | Modern Finishes | Electric Fireplace | Vinyl Plank Flooring | Large Windows | Recessed Lighting | Spacious Bedrooms | Upper Level Laundry | Side Entry to Basement | Great Backyard | Double Attached Garage | Driveway. Welcome to your brand new semi-detached home boasting 1,564 SqFt throughout the main and upper levels with an additional 655 SqFt in the unfinished basement. Be the first to live in this spacious home with modern finishes and incredible natural light. Step inside to a foyer with closet storage for a clean and organized space. The wide hallways, high ceilings, recessed lighting and wide plank flooring all compliment this home. The open floor plan kitchen, dining and living rooms make this the perfect home to entertain friends and family. The sparkling kitchen is outfitted with full height cabinets, gleaming white quartz countertops, bold black hardware and stainless steel appliances. The walk-in pantry is great for dry goods storage. The centre island is the ideal place for small meals and socializing while you cook. The dining room is paired with sliding glass doors that lead to the backyard making indoor/outdoor living easy. The living room is framed with a large window that overlooks the backyard and also



has an electric fireplace with a TV ready wall above. The main level is complete with a 2pc bath. Upstairs is finished with plush carpet flooring in the 3 grand bedrooms. The primary is expansive with a walk-in closet and private 4pc ensuite bath. The ensuite has a walk-in shower and dual vanity with a quartz countertop and storage below. Bedrooms 2 & 3 are both sizeable and share the 4pc bath with a tub/shower combo. The upper level laundry is every home owner's dream as its located near all the bedrooms. Downstairs, the basement has a separate side entry and rough-in plumbing. The blank canvas basement allows you to add your own personal touch to this home as your family sees fit! Outside is a great backyard with plenty of space for both dining and living. The front attached double garage and driveway allow for 4 vehicles to be parked at any time. Located in the highly desired neighbourhood of Waterford in Chestermere, your new home has quick access to all amenities in Chestermere and a quick commute to Calgary. Hurry and book your showing today!

Built in 2025

Essential Information

MLS® #	A2210051
Price	\$619,900
Bedrooms	3
Bathrooms	3.00
Full Baths	2
Half Baths	1
Square Footage	1,564
Acres	0.06
Year Built	2025
Type	Residential
Sub-Type	Semi Detached
Style	2 Storey, Side by Side

Status	Active
--------	--------

Community Information

Address	108 Waterford Way
Subdivision	NONE
City	Chestermere
County	Chestermere
Province	Alberta
Postal Code	T1X 3A2

Amenities

Parking Spaces	4
Parking	Double Garage Attached, Driveway, Garage Faces Front
# of Garages	2

Interior

Interior Features	Double Vanity, High Ceilings, Kitchen Island, No Animal Home, No Smoking Home, Open Floorplan, Pantry, Quartz Counters, Recessed Lighting, Separate Entrance, Walk-In Closet(s)
Appliances	Dishwasher, Electric Stove, Garage Control(s), Microwave Hood Fan, Refrigerator
Heating	Forced Air
Cooling	None
Fireplace	Yes
# of Fireplaces	1
Fireplaces	Electric
Has Basement	Yes
Basement	Exterior Entry, Full, Unfinished

Exterior

Exterior Features	Lighting, Rain Gutters
Lot Description	Back Yard, Interior Lot, Rectangular Lot, Street Lighting
Roof	Asphalt Shingle
Construction	Stone, Vinyl Siding, Wood Frame
Foundation	Poured Concrete

Additional Information

Date Listed	April 26th, 2025
Days on Market	41
Zoning	R-3

Listing Details

Listing Office RE/MAX Crown

Data is supplied by Pillar 9â„¢ MLS® System. Pillar 9â„¢ is the owner of the copyright in its MLS® System. Data is deemed reliable but is not guaranteed accurate by Pillar 9â„¢. The trademarks MLS®, Multiple Listing Service® and the associated logos are owned by The Canadian Real Estate Association (CREA) and identify the quality of services provided by real estate professionals who are members of CREA. Used under license.