

# \$424,900 - 76 Reeves Crescent, Red Deer

MLS® #A2211935

**\$424,900**

3 Bedroom, 3.00 Bathroom, 1,165 sqft

Residential on 0.16 Acres

Rosedale Estates, Red Deer, Alberta

Original Owners â€™ Exceptionally Well-Maintained Home on a Massive Lot! Welcome to this charming and lovingly cared-for 4-Level Split, nestled on an extra-large 88x116 lotâ€™perfect for your dream garage, RV parking, or future expansion plans! This home offers 3 finished levels and features 3 spacious bedrooms and 2 full bathrooms on the upper level, A bright main level with a welcoming kitchen and living room and a cozy third level featuring a large family room with a gas fireplace, a 3-piece bathroom, and a laundry room Recent upgrades include: NTI System combination furnace/boiler/water heater (approx. 3 years old)

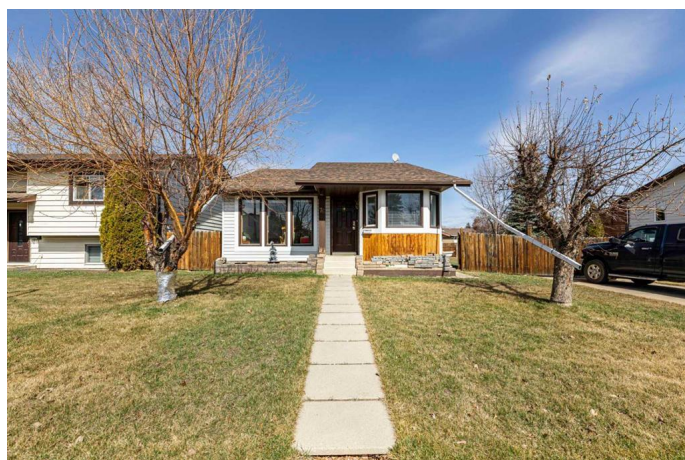
Shingles on both house and garage (also approx. 3 years old)

Pride of ownership shines throughout this solid home. Whether you're looking to move in as-is or dreaming of future upgrades, this property offers incredible space, functionality, and potential in a family-friendly neighborhood.

Built in 1982

## Essential Information

MLS® #	A2211935
Price	\$424,900
Bedrooms	3
Bathrooms	3.00
Full Baths	3



Square Footage	1,165
Acres	0.16
Year Built	1982
Type	Residential
Sub-Type	Detached
Style	4 Level Split
Status	Active

### **Community Information**

Address	76 Reeves Crescent
Subdivision	Rosedale Estates
City	Red Deer
County	Red Deer
Province	Alberta
Postal Code	T4P 2Y5

### **Amenities**

Parking Spaces	2
Parking	Double Garage Detached, Parking Pad
# of Garages	2

### **Interior**

Interior Features	Central Vacuum, No Animal Home, No Smoking Home, Vaulted Ceiling(s)
Appliances	Dishwasher, Electric Range, Garage Control(s), Refrigerator, Washer/Dryer, Window Coverings
Heating	High Efficiency
Cooling	None
Fireplace	Yes
# of Fireplaces	1
Fireplaces	Family Room, Gas, None
Has Basement	Yes
Basement	See Remarks

### **Exterior**

Exterior Features	None, Outdoor Grill
Lot Description	Back Lane, Landscaped, Wetlands
Roof	Asphalt Shingle
Construction	Stucco

Foundation	Poured Concrete
------------	-----------------

### **Additional Information**

Date Listed	April 17th, 2025
-------------	------------------

Days on Market	66
----------------	----

Zoning	R1
--------	----

### **Listing Details**

Listing Office	RE/MAX real estate central alberta
----------------	------------------------------------

Data is supplied by Pillar 9â„¢ MLS® System. Pillar 9â„¢ is the owner of the copyright in its MLS® System. Data is deemed reliable but is not guaranteed accurate by Pillar 9â„¢. The trademarks MLS®, Multiple Listing Service® and the associated logos are owned by The Canadian Real Estate Association (CREA) and identify the quality of services provided by real estate professionals who are members of CREA. Used under license.