

# \$499,000 - 452 Quarry Way Se, Calgary

MLS® #A2213199

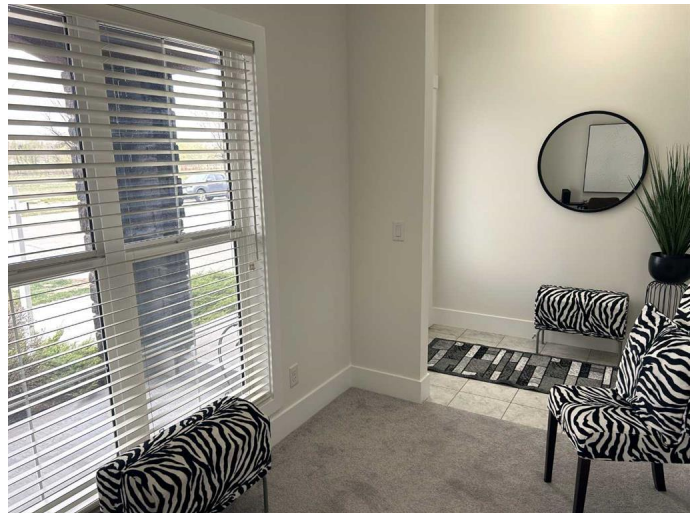
**\$499,000**

2 Bedroom, 3.00 Bathroom, 1,419 sqft

Residential on 0.03 Acres

Douglasdale/Glen, Calgary, Alberta

@@@ OPEN HOUSE SUNDAY JULY 13: 3-5  
@@@ FABULOUS END-UNIT IN QUARRY PARK -Nestled in an amenity rich, picturesque setting, this END-UNIT townhome offers a fabulous urban lifestyle, Driving into the area, it's easy to notice the distinctive architecture & landscape. Rounding the bend is this stylish "French Colonial" design. END-UNIT townhome with welcoming curb appeal. And LOW CONDO FEES. 2 primary bedrooms, 2 ½ baths, den, & large attached garage. Coming up the inviting west walk there is a covered patio - relax & enjoy a visit. Upon entering, there's an offset flexible den with ample windows & view. Maybe add a wall-bed. Tasteful finishing throughout and interior recently repainted. The Main has a gracious living room, gorgeous hardwood, abundant windows, high ceiling & ambient fireplace. Also a top-end TV/Sono is included. Flowing into the kitchen, it's great every day & for entertaining. The kitchen delights with custom gloss cabinetry, quartz counters, S/S/Appls, gas stove & ample dining area. Lovely wrap-around window views. Relax on the sunny west deck - light up the BBQ. An offset half bath provides convenience & privacy. Retreat to the top floor. Two primary bedrooms, each with en-suite & walk-in closet & built-in shelving. Also convenient laundry. Extra storage in the large garage. Quarry is reputed as having all the benefits of an inner-city community coupled with easy access. There's



fabulous Quarry Park Market, Remington  
YMCA and the natural paradise of theÂ Bow  
River & pathways .A Luxurious Home in a  
Scenic Community, Wonderful Amenities,  
Great Accessibility - all at a Friendly Price.  
Just move in and enjoy!Â

Built in 2015

### **Essential Information**

MLS® #	A2213199
Price	\$499,000
Bedrooms	2
Bathrooms	3.00
Full Baths	2
Half Baths	1
Square Footage	1,419
Acres	0.03
Year Built	2015
Type	Residential
Sub-Type	Row/Townhouse
Style	3 Storey
Status	Active

### **Community Information**

Address	452 Quarry Way Se
Subdivision	Douglasdale/Glen
City	Calgary
County	Calgary
Province	Alberta
Postal Code	T2C 5N4

### **Amenities**

Amenities	Visitor Parking, Other
Parking Spaces	1
Parking	Single Garage Attached
# of Garages	1

### **Interior**

Interior Features	Ceiling Fan(s), Closet Organizers, High Ceilings, Storage, Walk-In Closet(s), Quartz Counters
Appliances	Dishwasher, Dryer, Garage Control(s), Microwave Hood Fan, Refrigerator, Washer, Window Coverings, Gas Stove
Heating	Forced Air, Natural Gas
Cooling	None
Fireplace	Yes
# of Fireplaces	1
Fireplaces	Electric
Basement	None

## Exterior

Exterior Features	Balcony, Private Entrance
Lot Description	Corner Lot, Landscaped, Rectangular Lot
Roof	Asphalt Shingle
Construction	Stone, Stucco
Foundation	Poured Concrete

## Additional Information

Date Listed	April 19th, 2025
Days on Market	90
Zoning	M-2
HOA Fees	283
HOA Fees Freq.	ANN

## Listing Details

Listing Office	CIR Realty
----------------	------------

Data is supplied by Pillar 9â„¢ MLSÂ® System. Pillar 9â„¢ is the owner of the copyright in its MLSÂ® System. Data is deemed reliable but is not guaranteed accurate by Pillar 9â„¢. The trademarks MLSÂ®, Multiple Listing ServiceÂ® and the associated logos are owned by The Canadian Real Estate Association (CREA) and identify the quality of services provided by real estate professionals who are members of CREA. Used under license.