

# \$669,900 - 638 Couleesprings Crescent S, Lethbridge

MLS® #A2213201

**\$669,900**

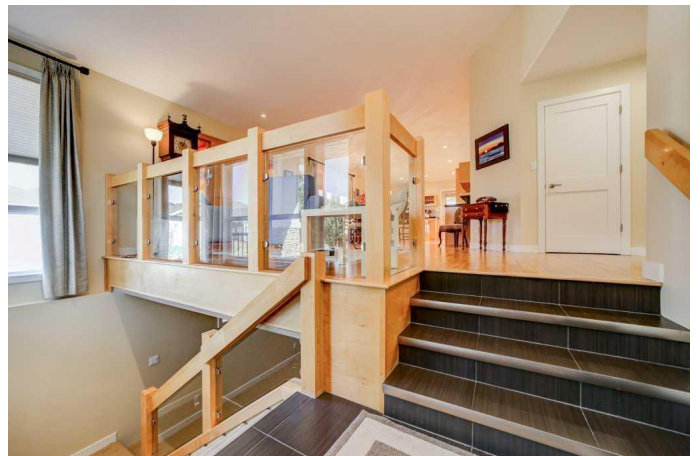
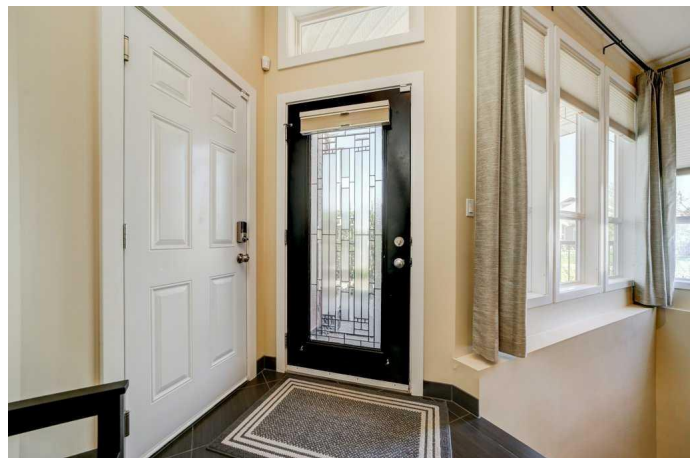
4 Bedroom, 2.00 Bathroom, 1,283 sqft

Residential on 0.12 Acres

Southgate, Lethbridge, Alberta

Looking for a one-of-a-kind home in immaculate condition in South Lethbridge? This stunning four-bedroom bungalow might just be the perfect fit for you. Meticulously maintained by its current owners and built by a reputable local builder, this home effortlessly blends contemporary design with everyday functionality. On the main floor, you'll find two spacious bedrooms and two beautifully finished bathrooms. The primary suite is a true retreat, featuring a luxurious 5-foot glass shower, heated tile flooring, and a generous walk-in closet. Convenient main-floor laundry adds to the home's practical layout—making daily living comfortable and efficient. The living room features a custom built-in cabinet that ties seamlessly into the kitchen design. The kitchen itself showcases clean lines, modern finishes, a distinctive peninsula, and a panelled refrigerator that blends beautifully with the cabinetry for a polished, integrated look. Downstairs, the fully developed basement offers a spacious recreation area complete with a cozy gas fireplace—perfect for movie nights or entertaining guests. You'll also find two additional large bedrooms and a third bathroom, making it an ideal space for family or visitors.

This home was thoughtfully designed with low-maintenance living in mind. Enjoy the convenience of underground sprinklers, durable vinyl fencing, covered deck and



professionally landscaped yard space that allows you to spend less time on chores and more time enjoying your home.

This is more than just a house—it's a place where style, comfort, and quality come together.

If you'd like to view this home please give us a call or reach out to your REALTOR® today. Opportunities to own a property this well cared for and uniquely designed don't come along often!

Built in 2007

**Essential Information**

MLS® #	A2213201
Price	\$669,900
Bedrooms	4
Bathrooms	2.00
Full Baths	2
Square Footage	1,283
Acres	0.12
Year Built	2007
Type	Residential
Sub-Type	Detached
Style	Bungalow
Status	Active

**Community Information**

Address	638 Couleesprings Crescent S
Subdivision	Southgate
City	Lethbridge
County	Lethbridge
Province	Alberta
Postal Code	T1K 5R5

**Amenities**

Parking Spaces	4
----------------	---

Parking	Double Garage Attached
# of Garages	2

## Interior

Interior Features	Kitchen Island, Bookcases
Appliances	Central Air Conditioner, Dishwasher, Electric Cooktop, Garage Control(s), Microwave, Range Hood, Refrigerator, Washer/Dryer, Window Coverings, Oven-Built-In
Heating	Forced Air, Fireplace(s)
Cooling	Central Air
Fireplace	Yes
# of Fireplaces	1
Fireplaces	Gas
Has Basement	Yes
Basement	Finished, Full

## Exterior

Exterior Features	None
Lot Description	Corner Lot, Few Trees, Landscaped
Roof	Asphalt Shingle
Construction	Stone, Vinyl Siding, Wood Frame
Foundation	Poured Concrete

## Additional Information

Date Listed	May 29th, 2025
Days on Market	8
Zoning	R-L

## Listing Details

Listing Office	RE/MAX FIRST
----------------	--------------

Data is supplied by Pillar 9â„¢ MLSÂ® System. Pillar 9â„¢ is the owner of the copyright in its MLSÂ® System. Data is deemed reliable but is not guaranteed accurate by Pillar 9â„¢. The trademarks MLSÂ®, Multiple Listing ServiceÂ® and the associated logos are owned by The Canadian Real Estate Association (CREA) and identify the quality of services provided by real estate professionals who are members of CREA. Used under license.