

\$419,777 - 3807 58 Avenue, Lloydminster

MLS® #A2213458

\$419,777

5 Bedroom, 3.00 Bathroom, 1,759 sqft
Residential on 0.18 Acres

Southridge, Lloydminster, Alberta

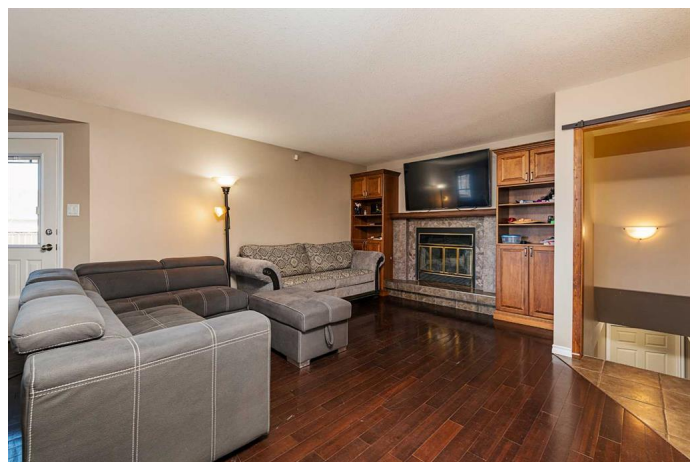
Welcome to this spacious and inviting bungalow boasting over 1,700 sq. ft. of beautifully designed living space in a quiet, family-oriented neighborhood. Surrounded by great neighbors and located just minutes from schools, parks, and all essential amenities, this home offers the perfect blend of comfort and convenience.

Ideal for families and entertainers alike, the open floor plan connects a stunning kitchen to multiple entertainment spaces both indoors and out, making gatherings seamless and enjoyable. The large deck provides the perfect backdrop for summer barbecues, while the soundproofing throughout the home ensures peaceful living year-round. Retreat to a generous primary suite featuring a jetted tub for ultimate relaxation. Additional highlights include a spacious driveway with ample street parking, dedicated RV parking, and plenty of storage throughout the home. This is more than just a house—it's a place to create lasting memories. Don't miss your chance to call it home! Check out the 3D virtual tour!

Built in 1988

Essential Information

| | |
|-----------|-----------|
| MLS® # | A2213458 |
| Price | \$419,777 |
| Bedrooms | 5 |
| Bathrooms | 3.00 |



| | |
|----------------|-------------|
| Full Baths | 3 |
| Square Footage | 1,759 |
| Acres | 0.18 |
| Year Built | 1988 |
| Type | Residential |
| Sub-Type | Detached |
| Style | Bungalow |
| Status | Active |

Community Information

| | |
|-------------|----------------|
| Address | 3807 58 Avenue |
| Subdivision | Southridge |
| City | Lloydminster |
| County | Lloydminster |
| Province | Alberta |
| Postal Code | T9V 2P3 |

Amenities

| | |
|----------------|--|
| Parking Spaces | 3 |
| Parking | Concrete Driveway, Double Garage Attached, Heated Garage |
| # of Garages | 2 |

Interior

| | |
|-------------------|---|
| Interior Features | Ceiling Fan(s), Jetted Tub, Laminate Counters, Storage, Walk-In Closet(s) |
| Appliances | Dishwasher, Garage Control(s), Microwave Hood Fan, Refrigerator, Stove(s), Washer/Dryer, Window Coverings, Garburator |
| Heating | Floor Furnace, Forced Air, Natural Gas |
| Cooling | Central Air |
| Fireplace | Yes |
| # of Fireplaces | 1 |
| Fireplaces | Wood Burning |
| Has Basement | Yes |
| Basement | Finished, Full |

Exterior

| | |
|-------------------|---|
| Exterior Features | Private Yard, Storage |
| Lot Description | Back Yard, Corner Lot, Front Yard, Landscaped, Lawn, Street Lighting, City Lot, Few Trees |

| | |
|--------------|-----------------|
| Roof | Asphalt Shingle |
| Construction | Wood Frame |
| Foundation | Wood |

Additional Information

| | |
|----------------|------------------|
| Date Listed | April 22nd, 2025 |
| Days on Market | 41 |
| Zoning | R1 |

Listing Details

| | |
|----------------|------------------|
| Listing Office | CENTURY 21 DRIVE |
|----------------|------------------|

Data is supplied by Pillar 9â„¢ MLSÂ® System. Pillar 9â„¢ is the owner of the copyright in its MLSÂ® System. Data is deemed reliable but is not guaranteed accurate by Pillar 9â„¢. The trademarks MLSÂ®, Multiple Listing ServiceÂ® and the associated logos are owned by The Canadian Real Estate Association (CREA) and identify the quality of services provided by real estate professionals who are members of CREA. Used under license.