

\$29,900 - 452 2 Avenue, Drumheller

MLS® #A2213834

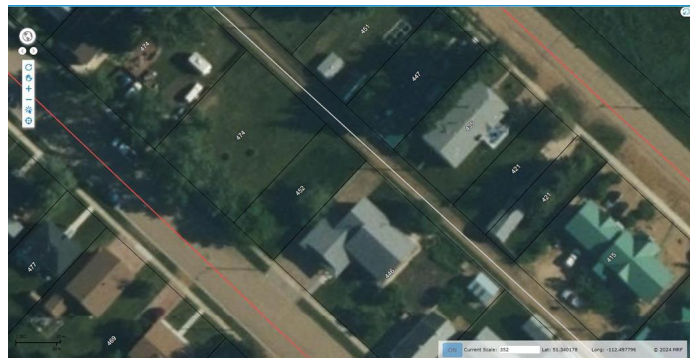
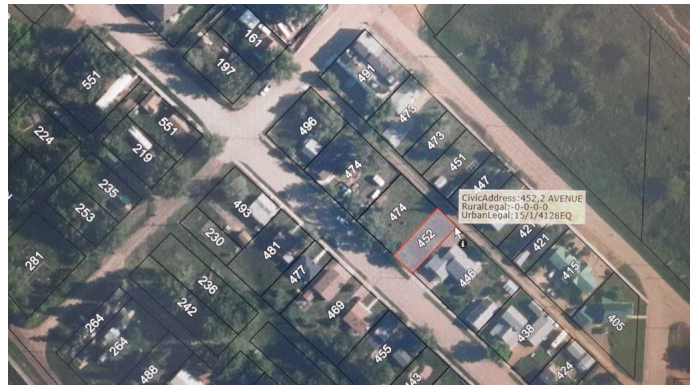
\$29,900

0 Bedroom, 0.00 Bathroom,
Land on 0.09 Acres

East Coulee, Drumheller, Alberta

Looking for a little patch of Land to call your own? Located in The Picturesque Drumheller Valley and Friendly Community of East Coulee. This 40x100 Vacant Lot is Level and ready for New Ownership. With Potable Water Station at the entrance to East Coulee, Berm Work with bike paths under construction, Power and Natural Gas at the lot line. Home to weekenders and Artists. Priced so Well you can hold while you make future plans.

Neighbourhood District Zoning is To enable primarily ground-oriented residential development with an emphasis on diverse, walkable neighbourhoods with varying built forms and housing typologies. To achieve complete communities, as envisioned in the Municipal Development Plan, select non-residential uses such as small-scale Restaurants/Caf  s, Offices, Home Occupations, Education, and personal services are allowed. Development shall be predominantly residential and may have a wide range of building types: single detached, duplex, rowhouses, and secondary suites. All development, regardless of use, shall have a built form that is consistent with surrounding residential properties



Essential Information

MLS® #	A2213834
Price	\$29,900

Bathrooms	0.00
Acres	0.09
Type	Land
Sub-Type	Residential Land
Status	Active

Community Information

Address	452 2 Avenue
Subdivision	East Coulee
City	Drumheller
County	Drumheller
Province	Alberta
Postal Code	T0J1B0

Additional Information

Date Listed	April 22nd, 2025
Days on Market	81
Zoning	ND

Listing Details

Listing Office	RE/MAX Now
----------------	------------

Data is supplied by Pillar 9â„¢ MLS® System. Pillar 9â„¢ is the owner of the copyright in its MLS® System. Data is deemed reliable but is not guaranteed accurate by Pillar 9â„¢. The trademarks MLS®, Multiple Listing Service® and the associated logos are owned by The Canadian Real Estate Association (CREA) and identify the quality of services provided by real estate professionals who are members of CREA. Used under license.