

# \$519,000 - 655 Keystone Chase W, Lethbridge

MLS® #A2214600

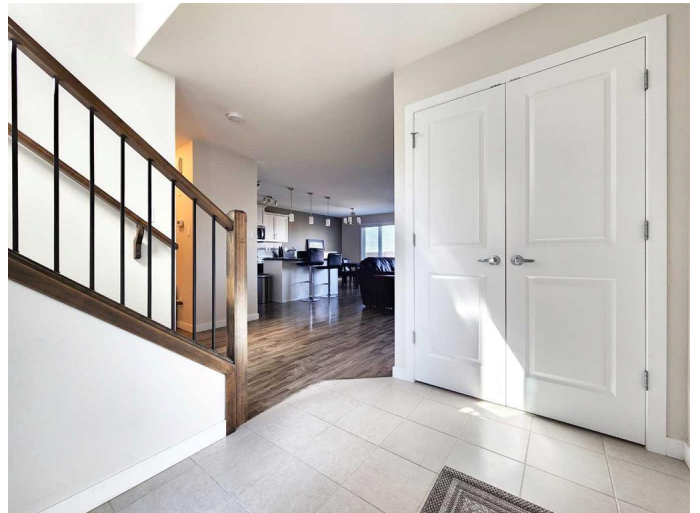
**\$519,000**

4 Bedroom, 4.00 Bathroom, 1,531 sqft

Residential on 0.10 Acres

Copperwood, Lethbridge, Alberta

Located in the tranquil neighborhood of Copperwood, this well-designed four-bedroom, four-bathroom family home offers a blend of comfort and functionality. The property features a keyless entry system, providing ease and security for all residents. Inside, the home is adorned with luxury vinyl plank flooring and modern paint, complemented by contemporary fixtures throughout. The heart of the home is the open concept kitchen, complete with stone countertops, a corner pantry, and sleek stainless steel appliances, including a glass cooktop. A large island provides breakfast bar seating, perfect for family gatherings or casual meals. From the kitchen dining area, step directly onto the back deck, which offers access to a spacious, fully fenced backyard with a tree and serene field views. The living room is a cozy retreat, featuring a gas fireplace, ideal for relaxing evenings. The main floor also includes a convenient 2pc bathroom and a laundry room. Upstairs, you'll find three well-sized bedrooms and a 4pc bathroom. The primary bedroom is your haven, boasting a large walk-in closet and a private 3pc ensuite. The basement extends the living space with an additional bedroom, a 4pc bathroom, and a large recreation room, equipped with an ample storage room. The home is completed by an attached double car garage, ensuring plenty of parking and additional storage space. Situated close to schools, the YMCA, green spaces, groceries, and all essential amenities, this



property provides a perfect balance of peaceful living and urban convenience

Built in 2014

**Essential Information**

|                |             |
|----------------|-------------|
| MLS® #         | A2214600    |
| Price          | \$519,000   |
| Bedrooms       | 4           |
| Bathrooms      | 4.00        |
| Full Baths     | 3           |
| Half Baths     | 1           |
| Square Footage | 1,531       |
| Acres          | 0.10        |
| Year Built     | 2014        |
| Type           | Residential |
| Sub-Type       | Detached    |
| Style          | 2 Storey    |
| Status         | Active      |

**Community Information**

|             |                      |
|-------------|----------------------|
| Address     | 655 Keystone Chase W |
| Subdivision | Copperwood           |
| City        | Lethbridge           |
| County      | Lethbridge           |
| Province    | Alberta              |
| Postal Code | T1J 4S7              |

**Amenities**

|                |                                    |
|----------------|------------------------------------|
| Parking Spaces | 4                                  |
| Parking        | Double Garage Attached, Off Street |
| # of Garages   | 2                                  |

**Interior**

|                   |  |
|-------------------|--|
| Interior Features | Breakfast Bar, Central Vacuum, Granite Counters, Kitchen Island, Walk-In Closet(s) |
| Appliances        | See Remarks  |
| Heating           | Forced Air   |
| Cooling           | Central Air  |

|                 |                                      |
|-----------------|--------------------------------------|
| Fireplace       | Yes                                  |
| # of Fireplaces | 2                                    |
| Fireplaces      | Basement, Electric, Gas, Living Room |
| Has Basement    | Yes                                  |
| Basement        | Finished, Full                       |

### **Exterior**

|                   |                                    |
|-------------------|------------------------------------|
| Exterior Features | Private Yard                       |
| Lot Description   | Landscaped, Underground Sprinklers |
| Roof              | Asphalt Shingle                    |
| Construction      | Vinyl Siding, Wood Frame           |
| Foundation        | Poured Concrete                    |

### **Additional Information**

|                |                  |
|----------------|------------------|
| Date Listed    | April 25th, 2025 |
| Days on Market | 37               |
| Zoning         | R-CL             |

### **Listing Details**

|                |                                 |
|----------------|---------------------------------|
| Listing Office | RE/MAX REAL ESTATE - LETHBRIDGE |
|----------------|---------------------------------|

Data is supplied by Pillar 9â„¢ MLS® System. Pillar 9â„¢ is the owner of the copyright in its MLS® System. Data is deemed reliable but is not guaranteed accurate by Pillar 9â„¢. The trademarks MLS®, Multiple Listing Service® and the associated logos are owned by The Canadian Real Estate Association (CREA) and identify the quality of services provided by real estate professionals who are members of CREA. Used under license.