

# \$620,000 - 1172 200 Newcastle Place, Drumheller

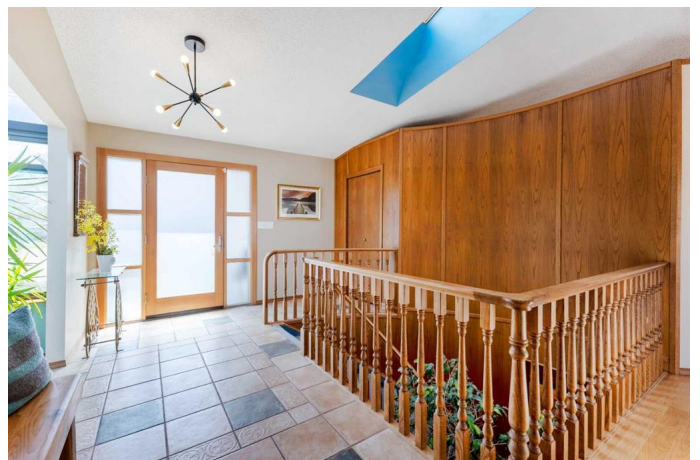
MLS® #A2214941

**\$620,000**

3 Bedroom, 3.00 Bathroom, 1,716 sqft  
Residential on 0.30 Acres

Newcastle, Drumheller, Alberta

Welcome to your dream home in the highly sought-after community of Newcastle Place, where luxury, comfort, and nature blend seamlessly. Nestled in a prime location backing onto the tranquil Red Deer River, this beautifully appointed executive home offers privacy and peace of mind thanks to the newly completed berm. Step into your own backyard oasis, fully landscaped with lush perennials, shrubs, and mature trees. Enjoy morning coffee or evening gatherings on the spacious decks with a pergola, complete with included patio furniture—perfect for entertaining or quiet relaxation. Inside, the heart of the home is a chef's kitchen featuring a gas range, granite countertops, a generous island, and stylish cabinetry. The light-filled solarium with a year-round hot tub offers a luxurious space to unwind, no matter the season. The main floor boasts a roomy primary bedroom retreat with a walk-in closet and a well-appointed ensuite. A second spacious bedroom, a dedicated home office, and sun-drenched living areas with a wood burning fireplace make this home as functional as it is elegant. Descend the grand staircase to a fully finished basement where you'll find a wet bar, gas fireplace, custom cabinetry, a third bedroom, and a luxurious 4-piece bath with steam shower—ideal for hosting guests or creating a private lower-level retreat. All of this just steps from green spaces, parks, trails, and Drumheller's beach, making it the perfect blend of nature and sophistication. Don't miss



your chance to own a stunning executive home in one of Drumheller's most desirable neighbourhoods.

Built in 1990

### Essential Information

MLS® #	A2214941
Price	\$620,000
Bedrooms	3
Bathrooms	3.00
Full Baths	3
Square Footage	1,716
Acres	0.30
Year Built	1990
Type	Residential
Sub-Type	Detached
Style	Bungalow
Status	Active

### Community Information

Address	1172 200 Newcastle Place
Subdivision	Newcastle
City	Drumheller
County	Drumheller
Province	Alberta
Postal Code	T0J 0Y2

### Amenities

Utilities	Electricity Connected, Natural Gas Connected, Sewer Connected, Water Connected, Garbage Collection
Parking Spaces	4
Parking	Concrete Driveway, Double Garage Attached, Garage Door Opener, Heated Garage
# of Garages	2

### Interior

Interior Features	Breakfast Bar, Ceiling Fan(s), Central Vacuum, Closet Organizers,
-------------------	-------------------------------------------------------------------

	French Door, Granite Counters, High Ceilings, Jetted Tub, Kitchen Island, No Smoking Home, Open Floorplan, Skylight(s), Storage, Sump Pump(s), Walk-In Closet(s), Wet Bar, Wood Windows
Appliances	Bar Fridge, Central Air Conditioner, Dishwasher, Dryer, Gas Stove, Microwave, Refrigerator, Washer, Window Coverings
Heating	Forced Air, Natural Gas
Cooling	Central Air
Fireplace	Yes
# of Fireplaces	2
Fireplaces	Basement, Gas, Great Room, Wood Burning
Has Basement	Yes
Basement	Finished, Full

## Exterior

Exterior Features	BBQ gas line, Private Yard, Rain Gutters, Storage, Rain Barrel/Cistern(s)
Lot Description	Back Yard, Backs on to Park/Green Space, Cul-De-Sac, Landscaped, No Neighbours Behind, Private, Secluded, Street Lighting, Underground Sprinklers
Roof	Rubber
Construction	Brick, Vinyl Siding, Wood Frame
Foundation	Wood

## Additional Information

Date Listed	May 2nd, 2025
Days on Market	7
Zoning	ND

## Listing Details

Listing Office	Royal LePage Wildrose Real Estate-Drumheller
----------------	----------------------------------------------

Data is supplied by Pillar 9â„¢ MLS® System. Pillar 9â„¢ is the owner of the copyright in its MLS® System. Data is deemed reliable but is not guaranteed accurate by Pillar 9â„¢. The trademarks MLS®, Multiple Listing Service® and the associated logos are owned by The Canadian Real Estate Association (CREA) and identify the quality of services provided by real estate professionals who are members of CREA. Used under license.