

\$714,900 - 10625 151 Avenue, Rural Grande Prairie No. 1, County of

MLS® #A2215528

\$714,900

4 Bedroom, 4.00 Bathroom, 2,008 sqft
Residential on 1.44 Acres

Whispering Ridge, Rural Grande Prairie No. 1,
County of, Alberta

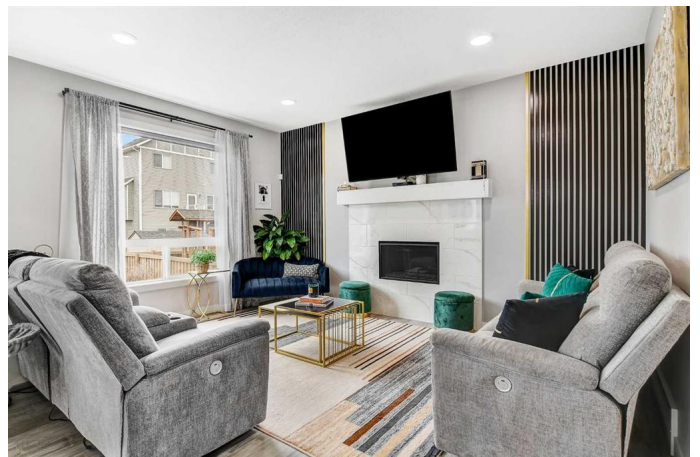
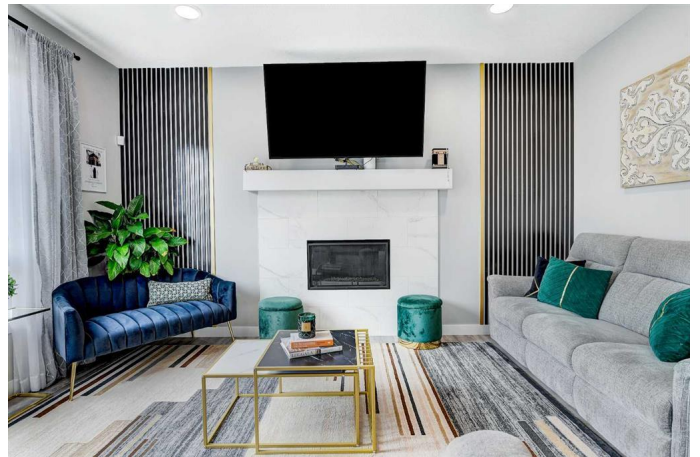
**ABSOLUTELY MINT, FULLY DEVELOPED
2-STOREY HOME ON A QUIET LOOP IN
WHISPERING RIDGE!**

This home is truly better than new, featuring stunning landscaping, high-end appliances, a fully developed basement, A/C, a two-tier deck, heated triple car garage, and so much more – completely turn-key and ready for you!

Built by Harker Homes, this is the modern "Taylor Plan" from their Crosstown Collection – offering over 2,000 sq ft of luxurious, functional living space that will impress at every turn. As you step inside, you're welcomed by a bright and spacious entryway with elegant ceramic tile and engineered hardwood floors.

The chef's kitchen is the heart of the home, boasting white soft-close floor-to-ceiling cabinets, a massive breakfast bar/island, quartz countertops, high-end "gun metal" KitchenAid appliances including a gas range, under-cabinet lighting, and a smart hexagon tile backsplash.

Upstairs you'll find the primary bedroom oasis - with spa-like bathroom + two large bedrooms, a 2nd full bathroom, a bright laundry room, and a beautiful bonus room.



The stunning primary suite feels like a luxury hotel retreat, featuring dual sinks, a freestanding tub, a private tiled shower with tempered glass door, and a large walk-in closet with custom built-ins and a window for natural light.

The newly finished basement continues the luxury with brand new in-floor heating under luxury vinyl plank flooring, a newly installed wet bar, electric fireplace, stylish feature wall, a large family area, a high-end bathroom, a bedroom/workout room, and two storage areas.

Mechanical highlights include hot water on demand, a high-efficiency furnace, central air conditioning, central vacuum, reverse osmosis, and soft water system.

The backyard is beautifully finished with a custom two-tier deck (complete with gas line for your BBQ) and impeccable landscaping. The large triple car garage is heated and comes with hot and cold taps – perfect for car lovers or hobbyists.

This home offers the perfect blend of luxury, functionality, and design, with every amenity you could dream of – it's 100% turn-key and shows better than new!

Don't miss this rare opportunity – call your favourite agent today!

Built in 2018

Essential Information

MLS® #	A2215528
Price	\$714,900
Bedrooms	4
Bathrooms	4.00

Full Baths	3
Half Baths	1
Square Footage	2,008
Acres	1.44
Year Built	2018
Type	Residential
Sub-Type	Detached
Style	2 Storey
Status	Active

Community Information

Address	10625 151 Avenue
Subdivision	Whispering Ridge
City	Rural Grande Prairie No. 1, County of
County	Grande Prairie No. 1, County of
Province	Alberta
Postal Code	T8X 0S3

Amenities

Utilities	Cable Available, Electricity Available, Natural Gas Available, Phone Available
Parking Spaces	9
Parking	Triple Garage Attached
# of Garages	3

Interior

Interior Features	Jetted Tub, No Animal Home, No Smoking Home
Appliances	Dishwasher, Refrigerator, Stove(s), Washer/Dryer, Window Coverings
Heating	Forced Air, Natural Gas
Cooling	Central Air
Fireplace	Yes
# of Fireplaces	1
Fireplaces	Gas
Has Basement	Yes
Basement	Full, Unfinished

Exterior

Exterior Features	Other
Lot Description	Landscaped

Roof	Asphalt Shingle
Construction	Stone, Vinyl Siding
Foundation	Poured Concrete

Additional Information

Date Listed	April 28th, 2025
Days on Market	6
Zoning	RR-2

Listing Details

Listing Office	Grassroots Realty Group Ltd.
----------------	------------------------------

Data is supplied by Pillar 9â„¢ MLS® System. Pillar 9â„¢ is the owner of the copyright in its MLS® System. Data is deemed reliable but is not guaranteed accurate by Pillar 9â„¢. The trademarks MLS®, Multiple Listing Service® and the associated logos are owned by The Canadian Real Estate Association (CREA) and identify the quality of services provided by real estate professionals who are members of CREA. Used under license.