

\$525,000 - 102 Pike Bay, Fort McMurray

MLS® #A2216147

\$525,000

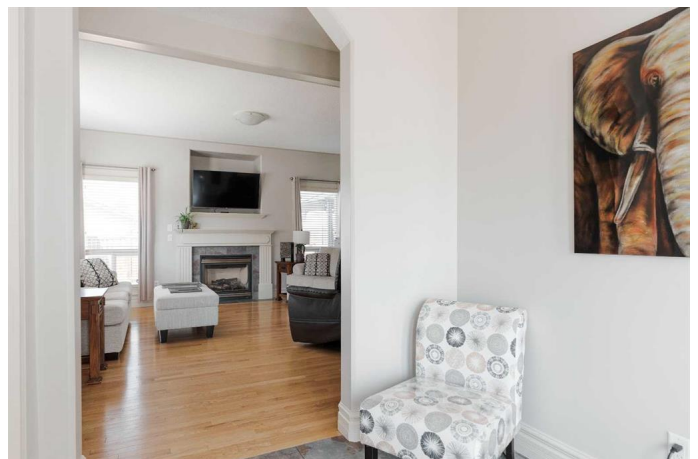
4 Bedroom, 4.00 Bathroom, 1,528 sqft

Residential on 0.11 Acres

Timberlea, Fort McMurray, Alberta

102 Pike Bay is a spacious and well-appointed two-storey home offering everything a growing family needs - from the generous 1528 square footage to thoughtful upgrades throughout. Nestled on a corner lot with a fully fenced yard, this property also boasts ample parking and is just steps from schools and Timberlea's many amenities. It's a must-see! At a glance, the standard specs are what you've come to expect from a two-storey home in Timberlea built in 2006 with an attached double garage – but let's get into the details. The aggregate driveway out front is larger than average, with room to park 3 vehicles across and the 21' x 23'8" heated garage and access to the back yard through the side gate gives you plenty of options for storing your toys. A lovely covered front step leads you into the large front foyer with a coat closet, just off the living room. With charming hardwood floors, the living room is spacious bright, with a cozy gas fireplace. The kitchen has a new fridge and recently replaced cabinets, an eat up bar area and a sizeable dining nook that leads into the yard. The main floor has a 2 piece bathroom, conveniently located beside the garage, and a laundry area.

Upstairs are 3 bedrooms and 2 full bathrooms. The primary bedroom is quite large and has a 3 piece ensuite and walk-in closet. Downstairs is fully developed with another bedroom, a large rec room and a 4 piece bathroom. A few of the many updates over the past few years include: cabinets,



fridge (2024), AC (2021), Furnace (2024), HW tank (2023), roof (2024), garage door and opener (2023). Currently equipped with a stair lift for enhanced accessibility. It can remain or be removed based on the buyerâ€™s needs.

Built in 2006

Essential Information

| | |
|----------------|-------------|
| MLS® # | A2216147 |
| Price | \$525,000 |
| Bedrooms | 4 |
| Bathrooms | 4.00 |
| Full Baths | 3 |
| Half Baths | 1 |
| Square Footage | 1,528 |
| Acres | 0.11 |
| Year Built | 2006 |
| Type | Residential |
| Sub-Type | Detached |
| Style | 2 Storey |
| Status | Active |

Community Information

| | |
|-------------|---------------|
| Address | 102 Pike Bay |
| Subdivision | Timberlea |
| City | Fort McMurray |
| County | Wood Buffalo |
| Province | Alberta |
| Postal Code | T9K 0C8 |

Amenities

| | |
|----------------|---|
| Parking Spaces | 5 |
| Parking | Double Garage Attached, Driveway, Off Street, Aggregate |
| # of Garages | 2 |

Interior

| | |
|-------------------|---|
| Interior Features | Built-in Features, Central Vacuum, Closet Organizers, Walk-In Closet(s) |
| Appliances | Central Air Conditioner, Dishwasher, Dryer, Garage Control(s), |

| | |
|-----------------|--|
| | Microwave Hood Fan, Refrigerator, Stove(s), Washer |
| Heating | Forced Air |
| Cooling | Central Air |
| Fireplace | Yes |
| # of Fireplaces | 1 |
| Fireplaces | Gas |
| Has Basement | Yes |
| Basement | Finished, Full |

Exterior

| | |
|-------------------|---|
| Exterior Features | Storage |
| Lot Description | Back Yard, Corner Lot, Dog Run Fenced In, Street Lighting |
| Roof | Asphalt Shingle |
| Construction | Concrete, Mixed, Vinyl Siding, Wood Frame |
| Foundation | Poured Concrete |

Additional Information

| | |
|----------------|---------------|
| Date Listed | May 2nd, 2025 |
| Days on Market | 35 |
| Zoning | R1S |

Listing Details

| | |
|----------------|------------------------|
| Listing Office | COLDWELL BANKER UNITED |
|----------------|------------------------|

Data is supplied by Pillar 9â„¢ MLSÂ® System. Pillar 9â„¢ is the owner of the copyright in its MLSÂ® System. Data is deemed reliable but is not guaranteed accurate by Pillar 9â„¢. The trademarks MLSÂ®, Multiple Listing ServiceÂ® and the associated logos are owned by The Canadian Real Estate Association (CREA) and identify the quality of services provided by real estate professionals who are members of CREA. Used under license.