

# \$679,900 - 5 Hodgstreet Place, Sylvan Lake

MLS® #A2217258

**\$679,900**

5 Bedroom, 3.00 Bathroom, 1,825 sqft  
Residential on 0.20 Acres

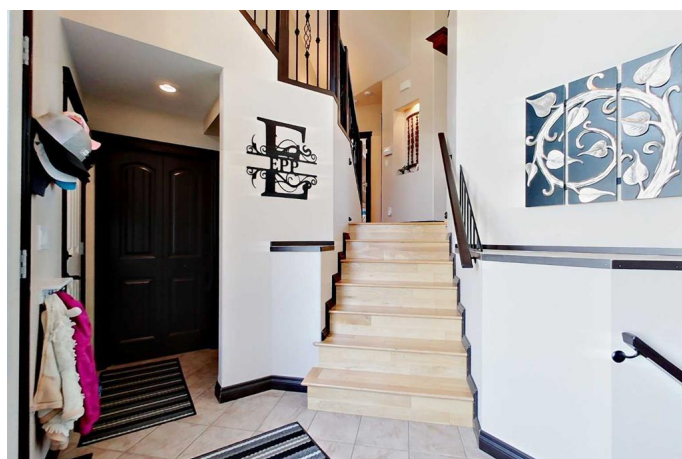
Hewlett Park, Sylvan Lake, Alberta

Looking for upgraded living at the lake? Let me be the first to welcome you to 5 Hodgstreet Place! This well maintained 5 bedroom modified bilevel bursts with extra's to make lake life a little easier. From proximity to all amenities to the water softener and under floor heat, this home gives "Family Feel" with 2 spacious bedrooms on the main floor along side the kitchen, dinning and inviting living room. Upstairs above the triple attached garage, an incredible primary suite awaits you, which includes a big ensuite and soaker tub plus walk in closet. This primary also has laundry hook ups available to it too. (pictures show laundry in primary, but they have since been moved downstairs) While down stairs boasts a large family room, 3 piece bath room with steam shower and 2 more bed rooms, one of which is fully soundproof and could easily be used as a theater/ multi-media room! A/C will help cool you off after a long summer day in your fabulous west facing back yard. A fully finished family home in the town of all seasons, move in ready and only missing.. it's perfect family!

Built in 2011

## Essential Information

|          |           |
|----------|-----------|
| MLS® #   | A2217258  |
| Price    | \$679,900 |
| Bedrooms | 5         |



|                |                   |
|----------------|-------------------|
| Bathrooms      | 3.00              |
| Full Baths     | 3                 |
| Square Footage | 1,825             |
| Acres          | 0.20              |
| Year Built     | 2011              |
| Type           | Residential       |
| Sub-Type       | Detached          |
| Style          | Modified Bi-Level |
| Status         | Active            |

### **Community Information**

|             |                    |
|-------------|--------------------|
| Address     | 5 Hodgstreet Place |
| Subdivision | Hewlett Park       |
| City        | Sylvan Lake        |
| County      | Red Deer County    |
| Province    | Alberta            |
| Postal Code | T4S0C5             |

### **Amenities**

|                |                        |
|----------------|------------------------|
| Parking Spaces | 6                      |
| Parking        | Triple Garage Attached |
| # of Garages   | 3                      |

### **Interior**

|                   |  |
|-------------------|--|
| Interior Features | Central Vacuum, Granite Counters, Soaking Tub, Sump Pump(s), Vaulted Ceiling(s), Vinyl Windows   |
| Appliances        | Central Air Conditioner, Dishwasher, Garage Control(s), Microwave Hood Fan, Refrigerator, Washer/Dryer, Water Softener, Window Coverings, Oven |
| Heating           | Forced Air   |
| Cooling           | Central Air  |
| Fireplace         | Yes  |
| # of Fireplaces   | 1  |
| Fireplaces        | Gas  |
| Has Basement      | Yes  |
| Basement          | Finished, Full   |

### **Exterior**

|                   |      |
|-------------------|------|
| Exterior Features | None |
|-------------------|------|

|                 |                 |
|-----------------|-----------------|
| Lot Description | Cul-De-Sac      |
| Roof            | Shingle         |
| Construction    | Vinyl Siding    |
| Foundation      | Poured Concrete |

### **Additional Information**

|                |                |
|----------------|----------------|
| Date Listed    | May 22nd, 2025 |
| Days on Market | 9              |
| Zoning         | R1             |

### **Listing Details**

|                |                                   |
|----------------|-----------------------------------|
| Listing Office | Royal LePage Network Realty Corp. |
|----------------|-----------------------------------|

Data is supplied by Pillar 9â„¢ MLS® System. Pillar 9â„¢ is the owner of the copyright in its MLS® System. Data is deemed reliable but is not guaranteed accurate by Pillar 9â„¢. The trademarks MLS®, Multiple Listing Service® and the associated logos are owned by The Canadian Real Estate Association (CREA) and identify the quality of services provided by real estate professionals who are members of CREA. Used under license.