

\$299,999 - 4608 47 St, Grimshaw

MLS® #A2217398

\$299,999

4 Bedroom, 3.00 Bathroom, 1,186 sqft

Residential on 0.16 Acres

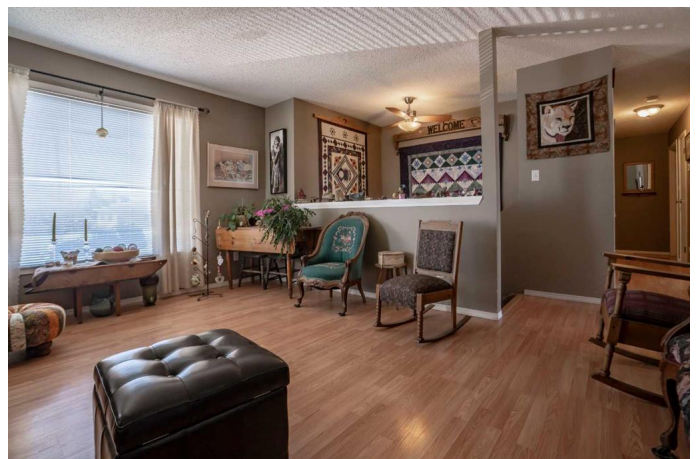
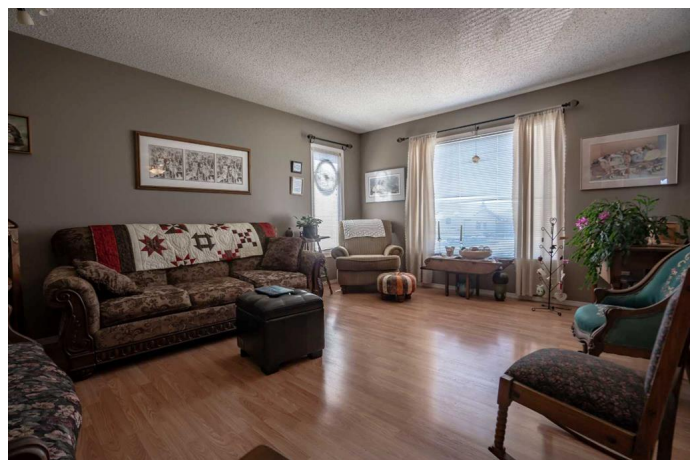
NONE, Grimshaw, Alberta

This home is nestled on the east edge of Grimshaw with no neighbor's behind you. Inside your 1186 bi level home you will find a large living room with a big bay window letting in tons of natural light. Around the corner you have a dining room and a large kitchen with tons of cupboard and counter space. In addition upstairs you have a large primary bedroom with a 3 piece ensuite, 2 more good sized bedroom and a 4 piece bathroom! Downstairs you have a large family room/ rec room with a woodstove for additional heat. Also a storage room with cold room attached, downstairs laundry area, an additional bedroom and a 3 piece bathroom. Outside there is a large deck overlooking a field and your spacious backyard. Down below you have a firepit area, raised garden beds, fenced off dog area and to top it all off a 22x26 double car garage with back alley access as well as a driveway in the front of the house. Don't miss out on this great property and call today!

Built in 1988

Essential Information

MLS® #	A2217398
Price	\$299,999
Bedrooms	4
Bathrooms	3.00
Full Baths	3
Square Footage	1,186



Acres	0.16
Year Built	1988
Type	Residential
Sub-Type	Detached
Style	Bi-Level
Status	Active

Community Information

Address	4608 47 St
Subdivision	NONE
City	Grimshaw
County	Peace No. 135, M.D. of
Province	Alberta
Postal Code	T0H1W0

Amenities

Parking Spaces	4
Parking	Double Garage Detached, Parking Pad
# of Garages	2

Interior

Interior Features	See Remarks
Appliances	Dishwasher, Garage Control(s), Microwave, Refrigerator, Stove(s), Washer/Dryer, Window Coverings
Heating	Forced Air
Cooling	None
Fireplace	Yes
# of Fireplaces	1
Fireplaces	Wood Burning Stove
Has Basement	Yes
Basement	Finished, Full

Exterior

Exterior Features	Fire Pit, Private Entrance, Private Yard
Lot Description	Back Lane, Back Yard, Few Trees, Front Yard, Lawn
Roof	Asphalt Shingle
Construction	Wood Frame
Foundation	Wood

Additional Information

Date Listed	May 2nd, 2025
Days on Market	17
Zoning	R2

Listing Details

Listing Office	Grassroots Realty Group Ltd.
----------------	------------------------------

Data is supplied by Pillar 9â„¢ MLS® System. Pillar 9â„¢ is the owner of the copyright in its MLS® System. Data is deemed reliable but is not guaranteed accurate by Pillar 9â„¢. The trademarks MLS®, Multiple Listing Service® and the associated logos are owned by The Canadian Real Estate Association (CREA) and identify the quality of services provided by real estate professionals who are members of CREA. Used under license.