

# \$3,299,000 - 1403 Beverley Place Sw, Calgary

MLS® #A2217754

**\$3,299,000**

4 Bedroom, 5.00 Bathroom, 4,038 sqft

Residential on 0.29 Acres

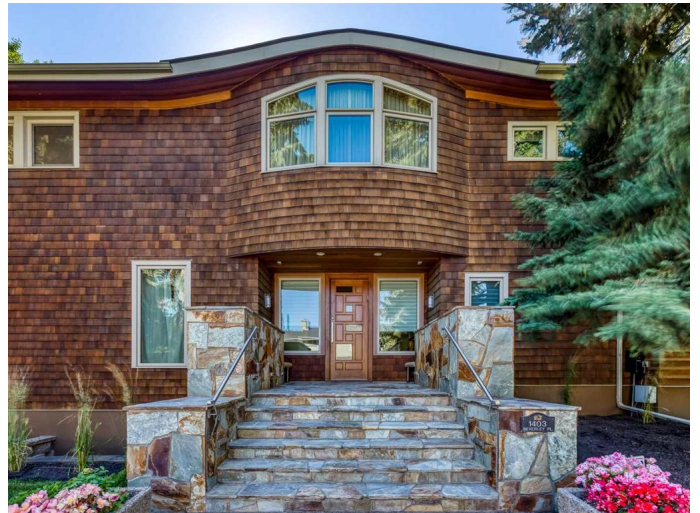
Bel-Aire, Calgary, Alberta

\*OPEN HOUSE This Saturday May 24 - 2pm-5pm\* Welcome to the PRESTIGIOUS community of Bel-Aire, known for its spacious lots, tree-lined streets, and stunning luxury homes. This CUSTOM-BUILT MASTERPIECE by renowned architect Michael Shugarman and esteemed builder Hammer Homes is a true one-of-a-kind residence.

Situated on a prime over 12,000 sq/ft corner lot in a quiet cul-de-sac, this home offers over 5,800 sq/ft of METICULOUSLY DESIGNED TOTAL LIVING SPACE. Every detail has been thoughtfully crafted with ARCHITECTURAL PRECISION. The HAND-CUT STONework on the front porch, back patio, and fireplace was not only designed but also meticulously drawn and shaped to fit seamlessly together. The CUSTOM-DESIGNED FRONT DOOR and powder room vanity were also architecturally drawn, designed, and handmade to achieve a completely bespoke finish.

The bright and airy interior is bathed in natural sunlight, with expansive south-facing windows connecting the indoors to the spacious outdoor patio. The custom kitchen boasts double-stacked granite countertops, stainless steel appliances, and a paneled Sub-Zero fridge, blending seamlessly with the outdoor living space – perfect for entertaining.

The heart of the home is the BREATHTAKING



GREAT ROOM â€” a stunning space with SOARING OVER 20-FOOT CEILINGS that create a grand sense of scale. TOWERING WINDOWS flood the room with natural light, while custom-built bookcases add warmth and character. A STRIKING FIREPLACE serves as the roomâ€™s focal point, with hand-cut stonework meticulously designed to complement the space. A HIDDEN STAIRCASE adds a touch of intrigue, blending functionality with sophisticated design. This remarkable room offers an inviting yet luxurious ambiance, perfect for quiet moments of relaxation or entertaining on a grand scale. This serene space is ideal for relaxation and gathering with loved ones.

Upstairs, youâ€™ll find three spacious bedrooms, each with their own ensuite and walk-in closet. The primary suite features a SPA-INSPIRED ENSUITE, a MASSIVE WALK-IN CLOSET, and access to the south-facing windows. Thoughtful touches can be found throughout the bedrooms, like a custom window bench, built-in office space, and Swarovski crystal-accented wallpaper elevate the design.

The upper floor also includes a versatile area ideal as an office, family room, or reading nook. The upstairs laundry room is bright and cozy due to the light from the corner windows. The fully developed basement features 10' ceilings, a guest bedroom with ensuite, and an open layout ready to suit your lifestyle.

This EXCEPTIONAL HOME blends TIMELESS DESIGN with IMPECCABLE CRAFTSMANSHIP â€” a rare opportunity in one of Calgary's most sought-after communities. Don't miss out on this extraordinary property.

Built in 2009

## Essential Information

MLS® #	A2217754
Price	\$3,299,000
Bedrooms	4
Bathrooms	5.00
Full Baths	4
Half Baths	1
Square Footage	4,038
Acres	0.29
Year Built	2009
Type	Residential
Sub-Type	Detached
Style	2 Storey
Status	Active

## Community Information

Address	1403 Beverley Place Sw
Subdivision	Bel-Aire
City	Calgary
County	Calgary
Province	Alberta
Postal Code	T2V 2C7

## Amenities

Parking Spaces	8
Parking	Additional Parking, Double Garage Attached, Driveway, Heated Garage, Insulated, Oversized
# of Garages	2

## Interior

Interior Features	Bar, Bookcases, Breakfast Bar, Built-in Features, Central Vacuum, Closet Organizers, Granite Counters, High Ceilings, Kitchen Island, No Animal Home, No Smoking Home, Pantry, Storage, Walk-In Closet(s), Wired for Sound
Appliances	Bar Fridge, Central Air Conditioner, Dishwasher, Dryer, Freezer, Garage Control(s), Microwave, Oven, Refrigerator, Washer, Window Coverings
Heating	Forced Air, Natural Gas
Cooling	Central Air
Fireplace	Yes

# of Fireplaces	1
Fireplaces	Gas
Has Basement	Yes
Basement	Finished, Full

### Exterior

Exterior Features	BBQ gas line, Lighting, Private Yard
Lot Description	Back Lane, Corner Lot, Cul-De-Sac, Front Yard, Landscaped
Roof	Asphalt Shingle
Construction	Cedar, Stone, Wood Siding
Foundation	Poured Concrete

### Additional Information

Date Listed	May 22nd, 2025
Days on Market	2
Zoning	R-CG

### Listing Details

Listing Office	eXp Realty
----------------	------------

Data is supplied by Pillar 9â„¢ MLS® System. Pillar 9â„¢ is the owner of the copyright in its MLS® System. Data is deemed reliable but is not guaranteed accurate by Pillar 9â„¢. The trademarks MLS®, Multiple Listing Service® and the associated logos are owned by The Canadian Real Estate Association (CREA) and identify the quality of services provided by real estate professionals who are members of CREA. Used under license.