

# \$595,000 - 575 Homestead Drive Ne, Calgary

MLS® #A2219626

**\$595,000**

4 Bedroom, 3.00 Bathroom, 1,667 sqft

Residential on 0.05 Acres

Homestead, Calgary, Alberta

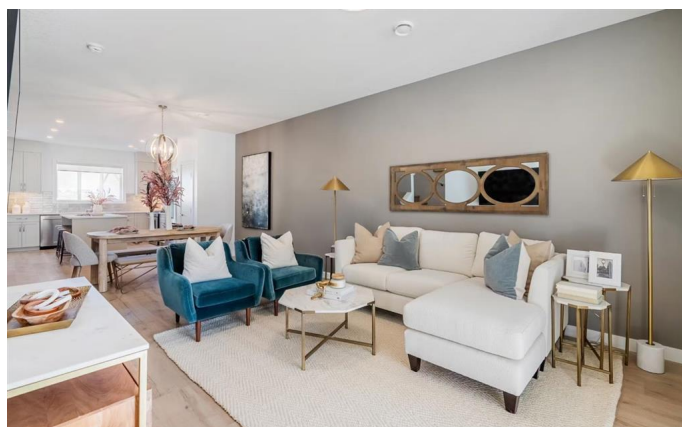
The Edward by Partners Homes is a brand new home to be built in the growing community of Homestead. This 4-bedroom, 3-bathroom plan is ideal for families and offers great flexibility with a main floor bedroom and full bath, perfect for guests, extended family, or a quiet home office. The kitchen features a large island, modern finishes, and plenty of storage, and it opens onto a bright dining area and cozy living room that's made for everyday living. Upstairs, you'll find a spacious primary bedroom with a walk-in closet and a private ensuite complete with dual sinks and a walk-in shower. Two more comfortable bedrooms, a full bath, upper floor laundry, and a central bonus room round out the upper level—great for movie nights or a kids' play space. There's also a side entrance to the undeveloped basement, giving you options for future development or extra storage. Set in northeast Calgary's Homestead community, you'll have access to over 4 km of walking paths, a 19-acre wetland with a gazebo, and future schools, parks, and sports fields. A great opportunity to build a home that fits your life in a welcoming, well-connected neighborhood.

Built in 2025

## Essential Information

MLS® #                      A2219626

Price                        \$595,000



|                |                        |
|----------------|------------------------|
| Bedrooms       | 4                      |
| Bathrooms      | 3.00                   |
| Full Baths     | 3                      |
| Square Footage | 1,667                  |
| Acres          | 0.05                   |
| Year Built     | 2025                   |
| Type           | Residential            |
| Sub-Type       | Semi Detached          |
| Style          | 2 Storey, Side by Side |
| Status         | Active                 |

### Community Information

|             |                        |
|-------------|------------------------|
| Address     | 575 Homestead Drive Ne |
| Subdivision | Homestead              |
| City        | Calgary                |
| County      | Calgary                |
| Province    | Alberta                |
| Postal Code | T3J 5W3                |

### Amenities

|                |             |
|----------------|-------------|
| Parking Spaces | 2           |
| Parking        | Parking Pad |

### Interior

|                   |  |
|-------------------|--|
| Interior Features | Double Vanity, Kitchen Island, No Animal Home, No Smoking Home, Open Floorplan, Pantry, Quartz Counters, Separate Entrance, Tankless Hot Water, Vinyl Windows, Walk-In Closet(s) |
| Appliances        | Dishwasher, Electric Range, Microwave Hood Fan, Refrigerator, Tankless Water Heater, Washer/Dryer  |
| Heating           | High Efficiency, Forced Air  |
| Cooling           | None   |
| Has Basement      | Yes  |
| Basement          | Full, Unfinished   |

### Exterior

|                   |                                    |
|-------------------|------------------------------------|
| Exterior Features | Lighting, Rain Gutters             |
| Lot Description   | Back Yard, Front Yard              |
| Roof              | Asphalt Shingle                    |
| Construction      | Concrete, Vinyl Siding, Wood Frame |

Foundation                  Poured Concrete

### **Additional Information**

Date Listed                  May 9th, 2025

Days on Market            6

Zoning                        R-Gm

### **Listing Details**

Listing Office                eXp Realty

Data is supplied by Pillar 9â„¢ MLS® System. Pillar 9â„¢ is the owner of the copyright in its MLS® System. Data is deemed reliable but is not guaranteed accurate by Pillar 9â„¢. The trademarks MLS®, Multiple Listing Service® and the associated logos are owned by The Canadian Real Estate Association (CREA) and identify the quality of services provided by real estate professionals who are members of CREA. Used under license.