

\$335,000 - 2321, 1140 Taradale Drive Ne, Calgary

MLS® #A2221481

\$335,000

2 Bedroom, 2.00 Bathroom, 989 sqft

Residential on 0.00 Acres

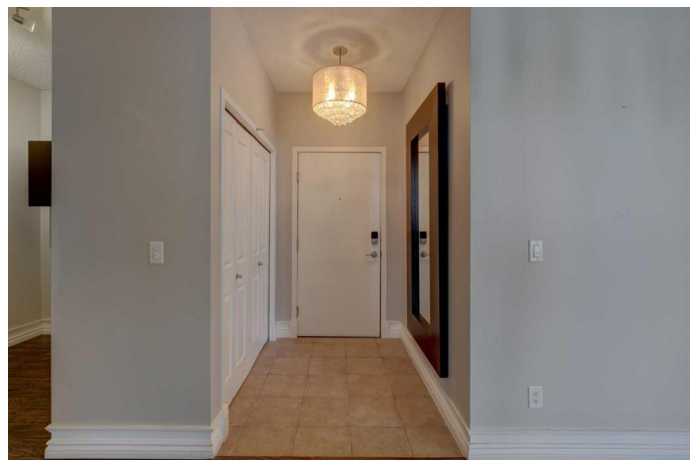
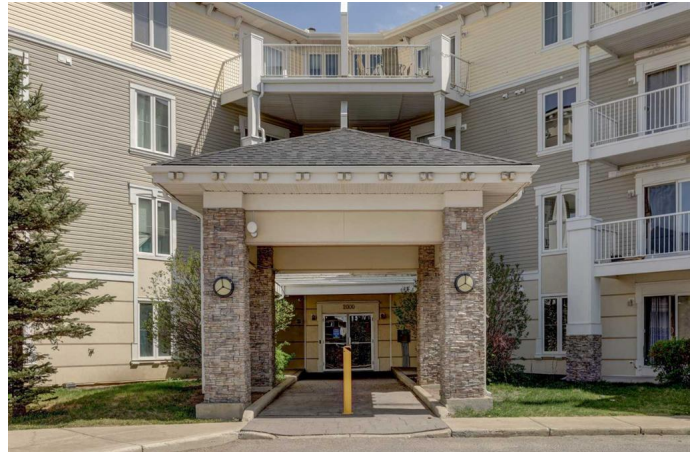
Taradale, Calgary, Alberta

This is the one youâ€™ve been waiting for! This standout 3rd floor corner unit has it all. Breathtaking mountain views, a wrap-around balcony, and a bright, spacious layout that sets it apart. With 2 generous bedrooms, 2 full bathrooms, and a versatile den, this home offers space, style, and flexibility for modern living. Soaked in natural light, the open concept design flows beautifully, while the wrap-around balcony provides the perfect spot to relax and take in the panoramic views. Inside, youâ€™ll find a clean, contemporary space thatâ€™s been METICULOUSLY MAINTAINED, just move in and enjoy. Tucked in a well managed building near a tranquil lake, this home also features heated underground parking and in-suite laundry for ultimate convenience. Stylish, spacious, and in an unbeatable location. This is condo living at its finest. Donâ€™t miss your chance to own one of the best units in the building!

Built in 2007

Essential Information

MLS® #	A2221481
Price	\$335,000
Bedrooms	2
Bathrooms	2.00
Full Baths	2
Square Footage	989
Acres	0.00



Year Built	2007
Type	Residential
Sub-Type	Apartment
Style	Single Level Unit
Status	Active

Community Information

Address	2321, 1140 Taradale Drive Ne
Subdivision	Taradale
City	Calgary
County	Calgary
Province	Alberta
Postal Code	T3J 0G1

Amenities

Amenities	Elevator(s), Storage, Trash, Visitor Parking
Parking Spaces	1
Parking	Heated Garage, Underground

Interior

Interior Features	Ceiling Fan(s), Walk-In Closet(s)
Appliances	Dishwasher, Dryer, Electric Oven, Microwave Hood Fan, Refrigerator, Washer
Heating	Baseboard
Cooling	None
Fireplace	Yes
# of Fireplaces	1
Fireplaces	Electric
# of Stories	4

Exterior

Exterior Features	Balcony
Roof	Asphalt Shingle
Construction	Vinyl Siding, Wood Frame

Additional Information

Date Listed	May 15th, 2025
Days on Market	5
Zoning	M-2

Listing Details

Listing Office The Real Estate District

Data is supplied by Pillar 9â„¢ MLSÂ® System. Pillar 9â„¢ is the owner of the copyright in its MLSÂ® System. Data is deemed reliable but is not guaranteed accurate by Pillar 9â„¢. The trademarks MLSÂ®, Multiple Listing ServiceÂ® and the associated logos are owned by The Canadian Real Estate Association (CREA) and identify the quality of services provided by real estate professionals who are members of CREA. Used under license.