

\$374,900 - 3 Patterson Place, Whitecourt

MLS® #A2222642

\$374,900

5 Bedroom, 2.00 Bathroom, 1,282 sqft

Residential on 0.18 Acres

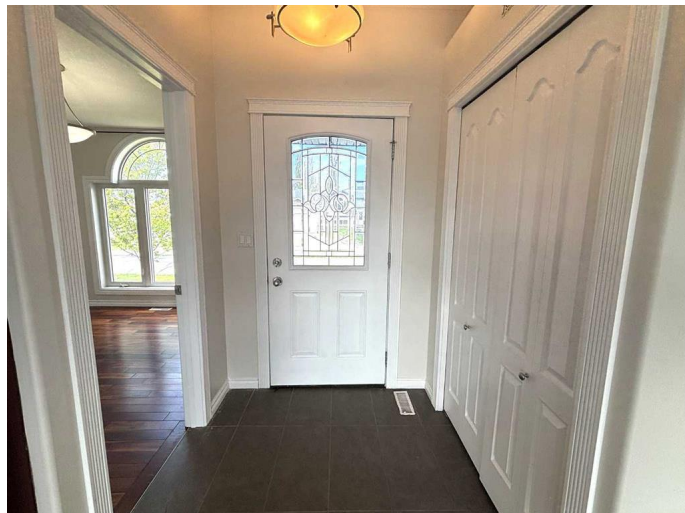
NONE, Whitecourt, Alberta

"OPEN FLOOR PLAN BUNGALOW !!!" This 2003 bungalow offers almost 1300 sq.ft. on the main level and has a great open floor plan with tons of windows! The large kitchen has an island with power and is open to the dining room and also open to the impressive living room with hardwood floors and gas fireplace. Large windows bring in tons of natural light into this great family home. The primary bedroom has its own 3 piece ensuite and also has 2 large windows. There are 2 more roomy bedrooms on the main level and the front facing bedroom would also make an excellent office. An added bonus is convenient main floor laundry. The basement in this home has a finished 4th bedroom, and the rest of the basement is all framed, drywalled and all the electrical is in. Ready to finish off the family room, 5th bedroom, bathroom and storage room. This home has a large fenced back yard with a huge back deck off the dining room. There is an attached double garage and all appliances will be staying. Main level and back deck have just been painted.

Built in 2003

Essential Information

MLS® #	A2222642
Price	\$374,900
Bedrooms	5
Bathrooms	2.00



Full Baths	2
Square Footage	1,282
Acres	0.18
Year Built	2003
Type	Residential
Sub-Type	Detached
Style	Bungalow
Status	Active

Community Information

Address	3 Patterson Place
Subdivision	NONE
City	Whitecourt
County	Woodlands County
Province	Alberta
Postal Code	T7S1P4

Amenities

Parking Spaces	4
Parking	Double Garage Attached
# of Garages	2

Interior

Interior Features	Ceiling Fan(s), Kitchen Island, Open Floorplan, Vaulted Ceiling(s)
Appliances	Dishwasher, Dryer, Refrigerator, Stove(s), Washer
Heating	Forced Air, Natural Gas
Cooling	None
Fireplace	Yes
# of Fireplaces	1
Fireplaces	Gas, Living Room
Has Basement	Yes
Basement	Full, Partially Finished

Exterior

Exterior Features	Fire Pit
Lot Description	Back Yard, Cul-De-Sac, Landscaped, Lawn, Level, Rectangular Lot
Roof	Asphalt Shingle
Construction	Stone, Vinyl Siding
Foundation	Poured Concrete

Additional Information

Date Listed May 19th, 2025
Zoning R-1C LOW DENSITYRESIDENTI

Listing Details

Listing Office RE/MAX ADVANTAGE (WHITECOURT)

Data is supplied by Pillar 9â„¢ MLSÂ® System. Pillar 9â„¢ is the owner of the copyright in its MLSÂ® System. Data is deemed reliable but is not guaranteed accurate by Pillar 9â„¢. The trademarks MLSÂ®, Multiple Listing ServiceÂ® and the associated logos are owned by The Canadian Real Estate Association (CREA) and identify the quality of services provided by real estate professionals who are members of CREA. Used under license.