

\$649,900 - 6 Castle Place, Cochrane

MLS® #A2223284

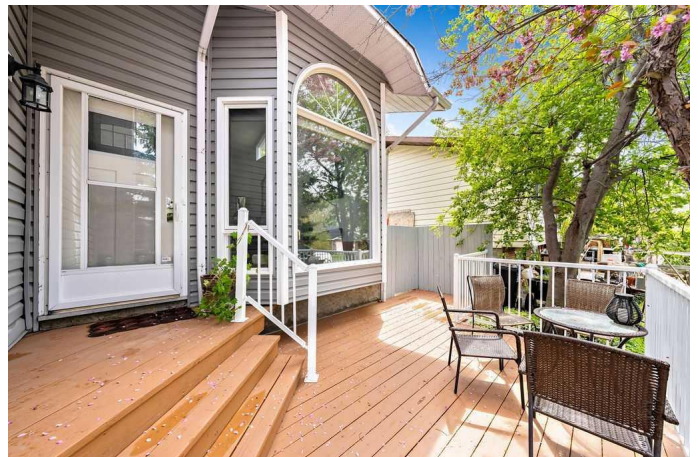
\$649,900

3 Bedroom, 3.00 Bathroom, 1,820 sqft

Residential on 0.11 Acres

Glenbow, Cochrane, Alberta

Impeccable living in an ideal location- Nestled in a peaceful pocket of Glenbow, one of Cochrane's most beloved communities, this lovely home offers the perfect balance of tranquility and accessibility. Enjoy the serenity of a quiet neighbourhood retreat while being just moments away from Cochrane's shops, restaurants, entertainment, and everyday amenities. As you approach, the charming front porch invites you in, setting the tone for the warmth and character found throughout. Step inside to be greeted by soaring ceilings and skylights that flood the space with natural light. The updated flooring and open-concept layout seamlessly connect the front sitting room, dining area, kitchen and the breakfast nook—perfect for everyday living and entertaining! The beautifully updated kitchen is the heart of the home, featuring quartz countertops, high-gloss cabinetry, a gas stove, and a Samsung smart fridge—blending function and modern luxury. Step outside from the kitchen to your private garden oasis—a peaceful backyard sanctuary ideal for your morning coffee or unwinding at the end of the day. Surrounded by mature greenery and birdsong, it's a tranquil extension of your indoor living space. Upstairs, the spacious primary bedroom is a true retreat, with a spa-inspired tub and a beautifully updated ensuite bathroom for your ultimate comfort. Two additional bedrooms and a renovated main 4-piece bathroom, provides fresh and modern finishes the whole family will



appreciate. The lower level is designed for connection and comfort, where a cozy wood burning fireplace becomes the centerpiece of your family room. French doors lead you to the hot tub jacuzzi, creating a seamless indoor-outdoor flow for year-round enjoyment. The basement offers additional flexible living space—perfect for guests, recreation, or a home office—whatever your lifestyle requires. Additional highlights include an attached double garage, an exposed aggregate front driveway, updated bathrooms throughout, and direct access to Cochrane’s extensive trail system—perfect for exploring the natural beauty that surrounds you. All of this, within walking distance to schools, parks, and historic downtown Cochrane. Book your private showing today and experience the lifestyle this Glenbow gem has to offer!

Built in 1987

Essential Information

MLS® #	A2223284
Price	\$649,900
Bedrooms	3
Bathrooms	3.00
Full Baths	3
Square Footage	1,820
Acres	0.11
Year Built	1987
Type	Residential
Sub-Type	Detached
Style	3 Level Split
Status	Active

Community Information

Address	6 Castle Place
Subdivision	Glenbow
City	Cochrane

County	Rocky View County
Province	Alberta
Postal Code	T4C 1G4

Amenities

Parking Spaces	4
Parking	Double Garage Attached, Aggregate
# of Garages	2

Interior

Interior Features	Central Vacuum, High Ceilings, Open Floorplan, Quartz Counters, Storage, Jetted Tub, Skylight(s), Soaking Tub
Appliances	Dishwasher, Dryer, Garage Control(s), Gas Stove, Range Hood, Refrigerator, Washer, Window Coverings
Heating	Forced Air
Cooling	None
Fireplace	Yes
# of Fireplaces	2
Fireplaces	Brick Facing, Family Room, Wood Burning
Has Basement	Yes
Basement	Finished, Full

Exterior

Exterior Features	Private Yard, Garden, Lighting
Lot Description	Back Yard, Cul-De-Sac, Landscaped, Garden, Private, Rectangular Lot, Street Lighting
Roof	Asphalt Shingle
Construction	Vinyl Siding, Wood Frame
Foundation	Wood

Additional Information

Date Listed	June 10th, 2025
Days on Market	47
Zoning	R-LD

Listing Details

Listing Office	CIR Realty
----------------	------------

Data is supplied by Pillar 9â„¢ MLS® System. Pillar 9â„¢ is the owner of the copyright in its MLS® System. Data is deemed reliable but is not guaranteed accurate by Pillar 9â„¢. The trademarks MLS®, Multiple Listing Service® and the associated logos are owned by The Canadian Real Estate Association (CREA) and identify the quality of services

provided by real estate professionals who are members of CREA. Used under license.