

\$765,000 - 18 Wyndham Park View, Carseland

MLS® #A2227461

\$765,000

5 Bedroom, 3.00 Bathroom, 1,632 sqft
Residential on 0.23 Acres

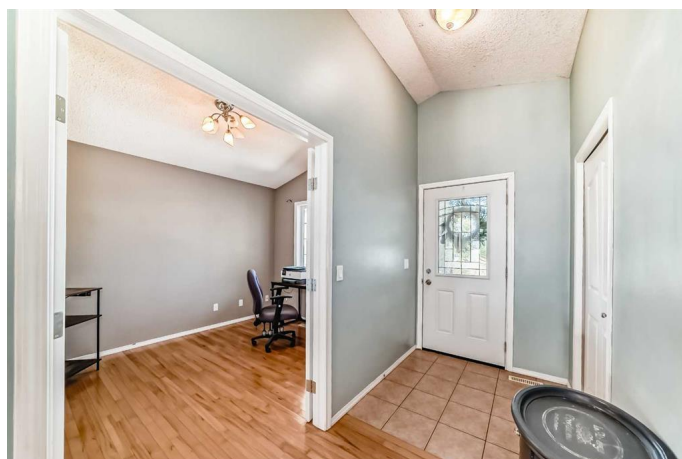
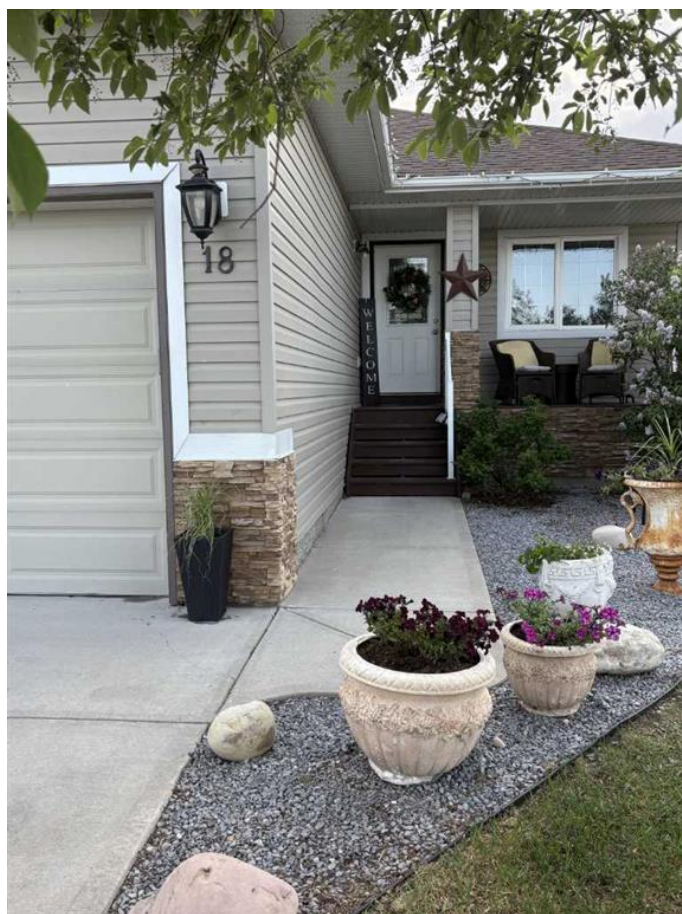
NONE, Carseland, Alberta

Visit REALTOR® website for additional information. Just minutes from the Bow River & backing Speargrass Golf Course! This gorgeous WALKOUT bungalow with 2 kitchens, 4 bdrms & office (5th bdrm) & 3027 sf of living space. This home offers 2 separate living spaces up & down! If you value rural lifestyle without the work of an acreage, this large lot is one of the biggest in the cul-de-sac. The home itself has 2 separate living areas boasting bright light throughout, 2 master bedrooms/ensuites (checkout that lower level master bedroom/walkin closet) & 2 laundry rooms. Your walkout patio boasts French doors to your private backyard offers refuge for your morning coffee (no back neighbours) in a quiet oasis just 7 mins-Carseland, 20 mins-Strathmore & 35 mins from Calgary. Speargrass prides itself in homeownership & community! 50/yr community association fee-optional. New clubhouse coming!

Built in 2007

Essential Information

MLS® #	A2227461
Price	\$765,000
Bedrooms	5
Bathrooms	3.00
Full Baths	3



Square Footage	1,632
Acres	0.23
Year Built	2007
Type	Residential
Sub-Type	Detached
Style	Bungalow
Status	Active

Community Information

Address	18 Wyndham Park View
Subdivision	NONE
City	Carseland
County	Wheatland County
Province	Alberta
Postal Code	T0J 0M0

Amenities

Parking Spaces	2
Parking	Double Garage Attached
# of Garages	2

Interior

Interior Features	Breakfast Bar, Ceiling Fan(s), Central Vacuum, Closet Organizers, Crown Molding, Double Vanity, Granite Counters, High Ceilings, Jetted Tub, Kitchen Island, Laminate Counters, Pantry, Recessed Lighting, See Remarks, Separate Entrance, Stone Counters, Storage, Sump Pump(s), Track Lighting, Vaulted Ceiling(s), Walk-In Closet(s), French Door, Soaking Tub
Appliances	Dishwasher, Dryer, Freezer, Microwave Hood Fan, Refrigerator, Washer/Dryer, Window Coverings, See Remarks
Heating	Fireplace(s), Forced Air
Cooling	Other
Fireplace	Yes
# of Fireplaces	2
Fireplaces	Electric, Gas
Has Basement	Yes
Basement	Exterior Entry, Finished, Full, Suite

Exterior

Exterior Features	Barbecue, Fire Pit, Garden, Playground, Private Entrance, Private Yard,
-------------------	---

	Storage, Rain Gutters
Lot Description	Back Yard, Backs on to Environmental Reserve, Few Garden, Landscaped, No Ne See Remarks, Views, Cree Sloping, Lawn, Level, Pie Sh
Roof	Asphalt
Construction	Vinyl Siding, Wood Frame
Foundation	Poured Concrete



Additional Information

Date Listed	June 4th, 2025
Days on Market	51
Zoning	S-LDR

Listing Details

Listing Office	PG Direct Realty Ltd.
----------------	-----------------------

Data is supplied by Pillar 9â„¢ MLS® System. Pillar 9â„¢ is the owner of the copyright in its MLS® System. Data is deemed reliable but is not guaranteed accurate by Pillar 9â„¢. The trademarks MLS®, Multiple Listing Service® and the associated logos are owned by The Canadian Real Estate Association (CREA) and identify the quality of services provided by real estate professionals who are members of CREA. Used under license.