

# \$569,000 - 141 Harvest Gold Heights Ne, Calgary

---

MLS® #A2228904

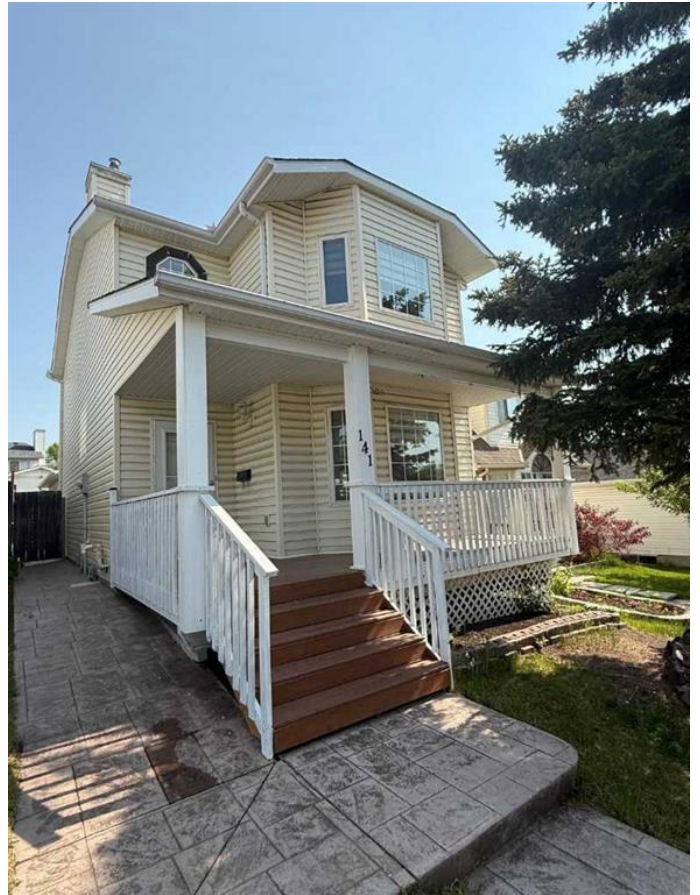
## \$569,000

3 Bedroom, 2.00 Bathroom, 1,341 sqft  
Residential on 0.07 Acres

Harvest Hills, Calgary, Alberta

OPEN HOUSE SUNDAY JUNE 8TH FROM 1 - 4 PM. 2 Storey with double detached garage. Newly renovated. New shingles, newer front veranda and deck, all new LVP floorings throughout, new window coverings, NO CARPETS, easy to maintain and clean. Excellent location....walking distance to Ascension of Our Lord School and close to Notre Dame High School. Close to transit, T&T Supermarket and easy access to Stoney Trail and Deerfoot Trail. Shows 10/10.

Built in 1994



## Essential Information

MLS® #	A2228904
Price	\$569,000
Bedrooms	3
Bathrooms	2.00
Full Baths	1
Half Baths	1
Square Footage	1,341
Acres	0.07
Year Built	1994
Type	Residential
Sub-Type	Detached
Style	2 Storey
Status	Active

## Community Information

Address 141 Harvest Gold Heights Ne

Subdivision	Harvest Hills
City	Calgary
County	Calgary
Province	Alberta
Postal Code	T3K 4H2

### Amenities

Parking Spaces	2
Parking	Double Garage Detached
# of Garages	2

### Interior

Interior Features	Ceiling Fan(s)
Appliances	Dishwasher, Dryer, Electric Washer, Window Coverings
Heating	Forced Air, Natural Gas
Cooling	None
Has Basement	Yes
Basement	Full, Unfinished

### Exterior

Exterior Features	None
Lot Description	Rectangular Lot
Roof	Asphalt Shingle
Construction	Vinyl Siding, Wood Frame
Foundation	Poured Concrete

### Additional Information

Date Listed	June 7th, 2025
Days on Market	5
Zoning	R-CG

### Listing Details

Listing Office	Grand Realty
----------------	--------------

Data is supplied by Pillar 9â„¢ MLSÂ® System. Pillar 9â„¢ is the owner of the copyright in its MLSÂ® System. Data is deemed reliable but is not guaranteed accurate by Pillar 9â„¢. The trademarks MLSÂ®, Multiple Listing ServiceÂ® and the associated logos are owned by The Canadian Real Estate Association (CREA) and identify the quality of services provided by real estate professionals who are members of CREA. Used under license.

