

\$69,900 - #6, 660023 Range Road 224, Rural Athabasca County

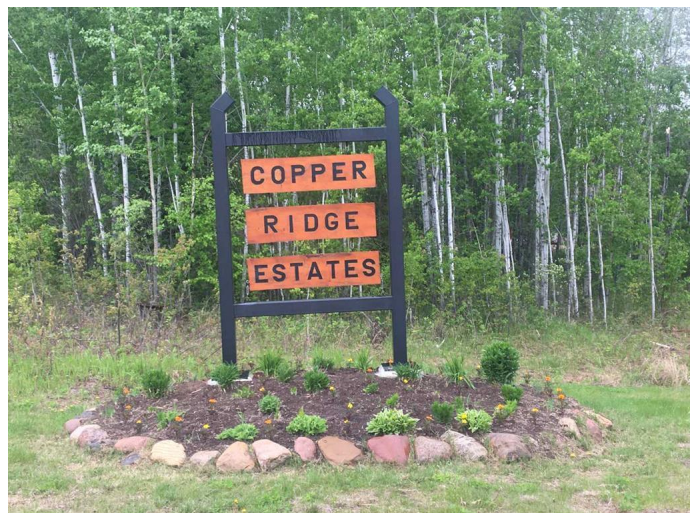
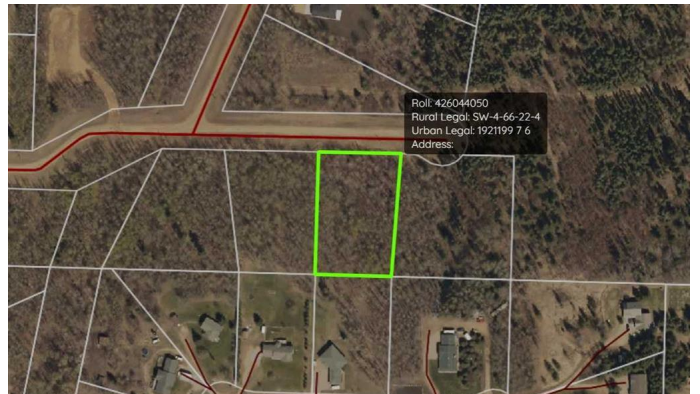
MLS® #A2230164

\$69,900

0 Bedroom, 0.00 Bathroom,
Land on 1.49 Acres

NONE, Rural Athabasca County, Alberta

One of the last three lots remaining. This Lot 6 is 1.49 acres, fully treed, and is tucked in towards the back of the subdivision. Just off pavement. Buy a lot in the gorgeous Copper Ridge Estates in Athabasca County, with no requirement to build. Build now, build in the future, or flip it when everything is sold out. The homes already built in the neighborhood create a tidy and peaceful place to live and thrive. Copper Ridge is less than 5 minutes south of Athabasca and is paved to the entrance of the subdivision. Its on the banks of the Tawatinaw Valley, and, as such, is a beautiful rolling haven.



Essential Information

MLS® #	A2230164
Price	\$69,900
Bathrooms	0.00
Acres	1.49
Type	Land
Sub-Type	Residential Land
Status	Active

Community Information

Address	#6, 660023 Range Road 224
Subdivision	NONE
City	Rural Athabasca County

County	Athabasca County
Province	Alberta
Postal Code	T9S 2A8

Additional Information

Date Listed	June 11th, 2025
Days on Market	14
Zoning	CR

Listing Details

Listing Office	ROYAL LEPAGE COUNTY REALTY
----------------	----------------------------

Data is supplied by Pillar 9â„¢ MLS® System. Pillar 9â„¢ is the owner of the copyright in its MLS® System. Data is deemed reliable but is not guaranteed accurate by Pillar 9â„¢. The trademarks MLS®, Multiple Listing Service® and the associated logos are owned by The Canadian Real Estate Association (CREA) and identify the quality of services provided by real estate professionals who are members of CREA. Used under license.