

# \$399,900 - 17 Carry Court Se, Medicine Hat

MLS® #A2234148

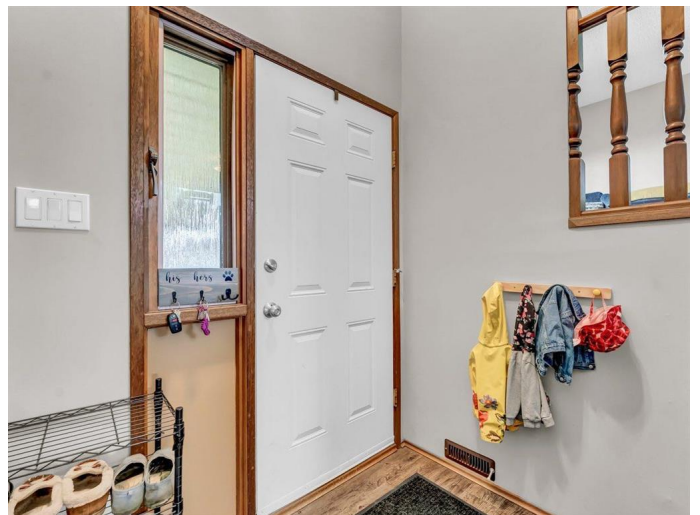
**\$399,900**

5 Bedroom, 3.00 Bathroom, 1,141 sqft

Residential on 0.14 Acres

Ross Glen, Medicine Hat, Alberta

Welcome to this beautifully maintained and fully developed 5-bedroom bi-level home, perfectly situated in a prime location with the added bonus of RV parking! Offering exceptional value, this move-in-ready property is ideal for growing families or anyone seeking a turnkey home close to all amenities including schools, shopping, parks, and transit. As you enter, you're welcomed by a spacious and bright foyer that sets the tone for the rest of the home. The main level features a generous family room filled with natural light, seamlessly connected to the open kitchen and dining area, ideal for entertaining and everyday living. Step out from the dining area onto the rear deck, perfect for summer BBQs, with access to a fully fenced backyard offering ample space for kids, pets, or gardening. The main floor includes three well-sized bedrooms, including a primary suite with a large closet and a private 3-piece ensuite. A full 4-piece bathroom services the two additional bedrooms. The fully finished lower level offers even more living space with a large family/rec room with fireplace, perfect for hosting guests or creating a home theatre. Two additional bedrooms are privately located at the back of the home and share another well-appointed 4-piece bathroom. The laundry/utility room includes plenty of extra storage space, a laundry sink for convenience, and room to stay organized. This home has been maintained by caring owners. Clean, updated, and ready for its next chapter, this home truly has it all,



space, functionality, and peace of mind. Don't miss this fantastic opportunity to own a beautiful home in a family-friendly neighborhood.

Built in 1986

**Essential Information**

MLS® #	A2234148
Price	\$399,900
Bedrooms	5
Bathrooms	3.00
Full Baths	3
Square Footage	1,141
Acres	0.14
Year Built	1986
Type	Residential
Sub-Type	Detached
Style	Bi-Level
Status	Active

**Community Information**

Address	17 Carry Court Se
Subdivision	Ross Glen
City	Medicine Hat
County	Medicine Hat
Province	Alberta
Postal Code	T1B 3Y2

**Amenities**

Parking Spaces	2
Parking	Concrete Driveway, Double Garage Attached, Garage Faces Front, Heated Garage
# of Garages	2

**Interior**

Interior Features	Wood Windows
Appliances	Central Air Conditioner, Dishwasher, Garage Control(s), Range Hood, Refrigerator, Stove(s), Washer/Dryer, Window Coverings

Heating	Forced Air
Cooling	Central Air
Fireplace	Yes
# of Fireplaces	1
Fireplaces	Family Room, Mantle, Wood Burning, Stone
Has Basement	Yes
Basement	Finished, Full

## Exterior

Exterior Features	None
Lot Description	Back Yard
Roof	Asphalt Shingle
Construction	Mixed
Foundation	Poured Concrete

## Additional Information

Date Listed	June 26th, 2025
Days on Market	8
Zoning	R-LD

## Listing Details

Listing Office	ROYAL LEPAGE COMMUNITY REALTY
----------------	-------------------------------

Data is supplied by Pillar 9â„¢ MLS® System. Pillar 9â„¢ is the owner of the copyright in its MLS® System. Data is deemed reliable but is not guaranteed accurate by Pillar 9â„¢. The trademarks MLS®, Multiple Listing Service® and the associated logos are owned by The Canadian Real Estate Association (CREA) and identify the quality of services provided by real estate professionals who are members of CREA. Used under license.