

# \$911,400 - 122 Speargrass Close, Carseland

---

MLS® #A2235526

## \$911,400

2 Bedroom, 2.00 Bathroom, 1,800 sqft

Residential on 0.21 Acres

NONE, Carseland, Alberta

Welcome to 122 Speargrass Close â€” where custom craftsmanship meets thoughtful design, brought to life by the renowned Kelly Kustom Homes. This isnâ€™t just another house on the block. Itâ€™s the full package: function, flair, and the kind of layout that just works. Step into over 1,700 sq ft of elevated main-floor living. Vaulted ceilings, oversized windows, and custom wood detailing set the tone the moment you enter. The open-concept living room flows seamlessly into a dream kitchen â€” think massive island, walk-in pantry, upgraded appliances, and a window above the sink (because yes, that matters). The primary suite? Itâ€™s tucked away in its own private wing and features everything on your wishlist: walk-in closet, double vanity, freestanding tub, and a custom-tiled shower built for real-life luxury. Two additional bedrooms and a full bathroom are smartly placed on the opposite side, perfect for kids, guests, or your home office setup. Need more space? The walkout basement is already framed with two more bedrooms, a full bathroom, and a huge rec roomâ€”just waiting for your finishing touches. Bonus: rough-ins for in-floor heating and a wet bar are already in place. Now letâ€™s talk curb appeal. The stunning timber-accented front elevation, triple garage, and south-facing deck overlooking the greenspace make this home a total knockout from every angle. Youâ€™re also just steps from the Speargrass Golf Course and a short drive to the Bow River, making it ideal for



anyone who wants peace, space, and lifestyle all in one. This home was built to stand out â€” and stand the test of time. Home is currently being built and is pending final completion. More lots available in Speargrass, Strathmore or Langdon. All photos are of the showhome in Langdon, AB .

Built in 2025

Essential Information

MLS® #	A2235526
Price	\$911,400
Bedrooms	2
Bathrooms	2.00
Full Baths	1
Half Baths	1
Square Footage	1,800
Acres	0.21
Year Built	2025
Type	Residential
Sub-Type	Detached
Style	Bungalow
Status	Active

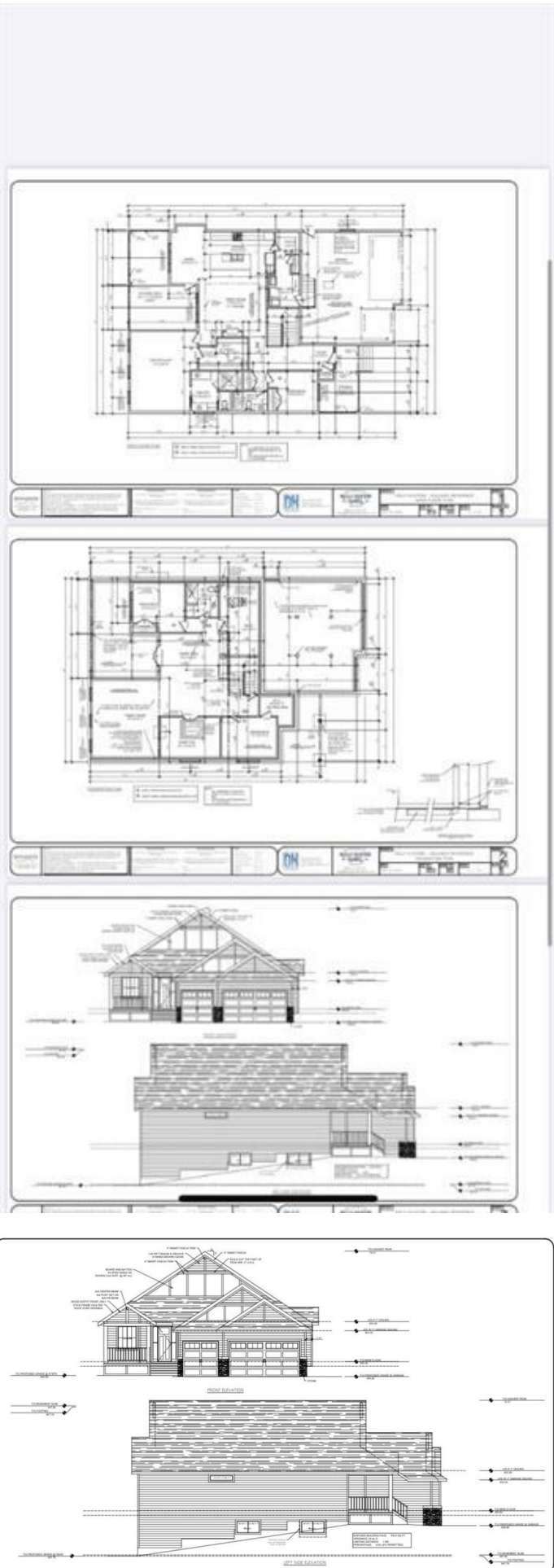
Community Information

Address	122 Speargrass Close
Subdivision	NONE
City	Carseland
County	Wheatland County
Province	Alberta
Postal Code	T0J0M0

Amenities

Amenities	None
Parking Spaces	4
Parking	Concrete Driveway, Triple Garage
# of Garages	3

Interior



Interior Features	Bar, Beamed Ceilings, Built-in Features, Closet Organizers, Double Vanity, High Ceilings, Open Floorplan, Pantry
Appliances	Bar Fridge, Central Air Conditioner, Dishwasher, Dryer, Garage Control(s), Gas Cooktop, Microwave, Refrigerator, Washer/Dryer, Window Coverings
Heating	Forced Air
Cooling	Central Air
Fireplace	Yes
# of Fireplaces	1
Fireplaces	Gas
Has Basement	Yes
Basement	Partial, Partially Finished

## Exterior

Exterior Features	Balcony, BBQ gas line, Fire Pit, Lighting, Private Yard
Lot Description	Back Yard, City Lot, Close to Clubhouse, Cul-De-Sac, Front Yard, Garden, Paved
Roof	Asphalt Shingle
Construction	Cement Fiber Board, Stone, Mixed
Foundation	Poured Concrete

## Additional Information

Date Listed	June 28th, 2025
Days on Market	8
Zoning	450
HOA Fees	50
HOA Fees Freq.	ANN

## Listing Details

Listing Office	RE/MAX Key
----------------	------------

Data is supplied by Pillar 9â„¢ MLS® System. Pillar 9â„¢ is the owner of the copyright in its MLS® System. Data is deemed reliable but is not guaranteed accurate by Pillar 9â„¢. The trademarks MLS®, Multiple Listing Service® and the associated logos are owned by The Canadian Real Estate Association (CREA) and identify the quality of services provided by real estate professionals who are members of CREA. Used under license.