

\$549,800 - 135, 102 Scenic Drive N, Lethbridge

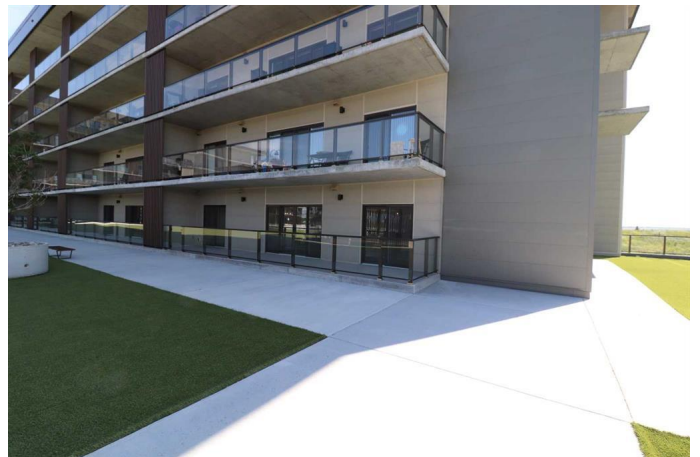
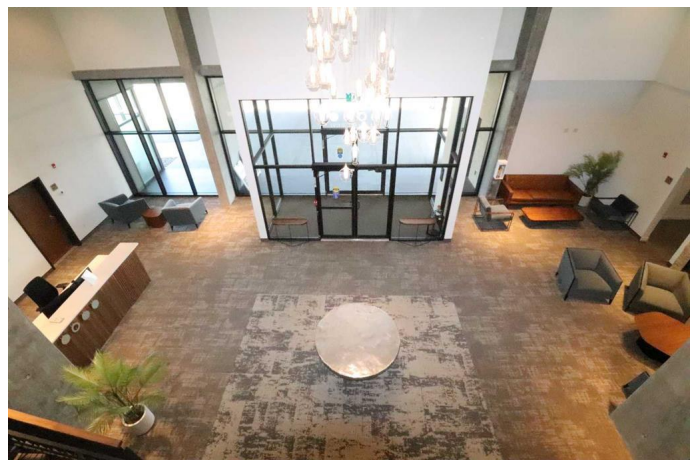
MLS® #A2243829

\$549,800

2 Bedroom, 2.00 Bathroom, 1,125 sqft
Residential on 0.00 Acres

Downtown, Lethbridge, Alberta

The ever-popular Lautner floor plan offers a wide-open layout with 1125 sq ft of comfortable living space, 2 bedrooms, 2 bathrooms, main level laundry and plenty of in-suite storage. Ultra modern and appealing throughout, the design features and luxury finishes similar to the much higher priced units, are sure to impress. With function and convenience in mind, you will find this unit to be perfect for day to day living and for hosting family and friends. The Primary bedroom has a spacious walk-through closet and luxurious 4pc ensuite complete with 2 sinks and a California style walk-in shower. The 2nd bedroom on the opposite side of the suite sits adjacent to another 4pc bathroom. Three sliding doors lead to an expansive 40' x 7' covered deck giving you an additional 240 sq ft of outdoor living space, immediate courtyard access, exceptional valley views, and outdoor amenities. There are 6 appliances included as well as a convenient natural gas line for your BBQ. The lengthy list of current and future amenities within the building are 2nd to none in the city and offer a lifestyle that can be enjoyed at your leisure. Adding to the simple life concept, all utilities, property maintenance, professional management, and reserve fund contributions are provided within your condominium fees. Everything is set up for you to come and go as you please. Pets are allowed however, some restrictions apply. The heated underground parking garage as well as your own private storage unit are



fantastic perks as well. Additional parking stalls are often available on a rental basis. Due to popular demand, move-in-ready inventory is low. Call a Real Estate Professional today to book your own viewing.

Built in 2024

Essential Information

MLS® #	A2243829
Price	\$549,800
Bedrooms	2
Bathrooms	2.00
Full Baths	2
Square Footage	1,125
Acres	0.00
Year Built	2024
Type	Residential
Sub-Type	Apartment
Style	Single Level Unit
Status	Active

Community Information

Address	135, 102 Scenic Drive N
Subdivision	Downtown
City	Lethbridge
County	Lethbridge
Province	Alberta
Postal Code	T1H 5L9

Amenities

Amenities	Bicycle Storage, Community Gardens, Elevator(s), Party Room, Visitor Parking, Workshop, Car Wash
Parking Spaces	1
Parking	Parkade, Stall

Interior

Interior Features	Breakfast Bar, High Ceilings, Open Floorplan, Quartz Counters, Walk-In Closet(s), Tankless Hot Water
-------------------	--

Appliances	Built-In Oven, Dishwasher, Washer/Dryer Stacked, Built-In Refrigerator, Electric Cooktop
Heating	In Floor, Radiant
Cooling	Central Air
# of Stories	5

Exterior

Exterior Features	Balcony, BBQ gas line, Storage, Courtyard
Construction	Stucco

Additional Information

Date Listed	August 6th, 2025
Days on Market	55
Zoning	C-D

Listing Details

Listing Office	Royal LePage South Country - Lethbridge
----------------	---

Data is supplied by Pillar 9â„¢ MLSÂ® System. Pillar 9â„¢ is the owner of the copyright in its MLSÂ® System. Data is deemed reliable but is not guaranteed accurate by Pillar 9â„¢. The trademarks MLSÂ®, Multiple Listing ServiceÂ® and the associated logos are owned by The Canadian Real Estate Association (CREA) and identify the quality of services provided by real estate professionals who are members of CREA. Used under license.