

\$194,500 - 15420 Township Road 743a, Rural Big Lakes County

MLS® #A2246402

\$194,500

4 Bedroom, 1.00 Bathroom, 1,687 sqft
Residential on 17.64 Acres

NONE, Rural Big Lakes County, Alberta

17.64 acres just outside of Enilda, and near High Prairie. Featuring at 1687 sq ft 4 bedroom bungalow with a big sunny den, spacious family room, and a big country kitchen to create the future memories of your new home. The basement is partially developed, and the land is mostly fenced, a diamond in the rough. This home waits for your caring touch to bring it's shine back.

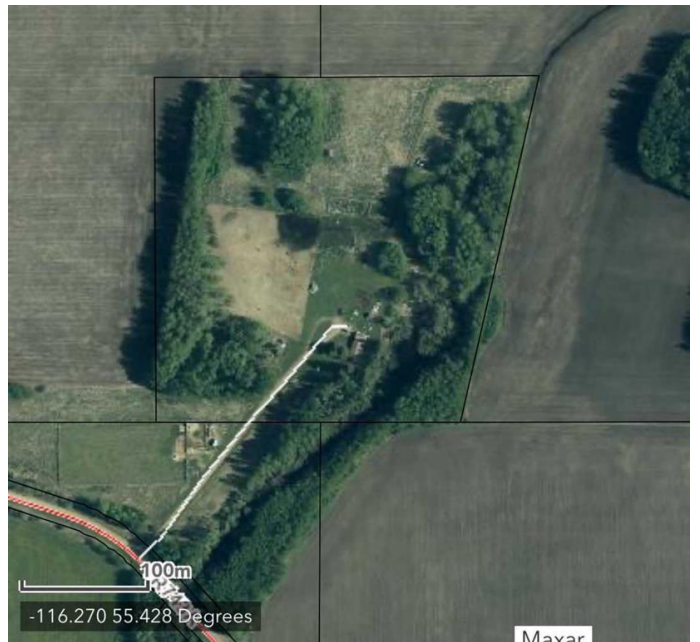
Built in 1969

Essential Information

MLS® #	A2246402
Price	\$194,500
Bedrooms	4
Bathrooms	1.00
Full Baths	1
Square Footage	1,687
Acres	17.64
Year Built	1969
Type	Residential
Sub-Type	Detached
Style	Acreage with Residence, Bur
Status	Active

Community Information

Address	15420 Township Road 743a
Subdivision	NONE



City	Rural Big Lakes County
County	Big Lakes County
Province	Alberta
Postal Code	T0G0W0

Amenities

Parking	None, Off Street, Gravel Driveway
---------	-----------------------------------

Interior

Interior Features	Laminate Counters, See Remarks
Appliances	None
Heating	Forced Air, Natural Gas
Cooling	None
Has Basement	Yes
Basement	Partial, Partially Finished

Exterior

Exterior Features	Private Yard
Lot Description	Few Trees, Front Yard, Low Maintenance Landscape, Farm, Native Plants, Pasture
Roof	Asphalt Shingle
Construction	Concrete, Wood Frame, Wood Siding
Foundation	Poured Concrete

Additional Information

Date Listed	August 5th, 2025
Days on Market	39
Zoning	.

Listing Details

Listing Office	CENTURY 21 NORTHERN REALTY
----------------	----------------------------

Data is supplied by Pillar 9â„¢ MLSÂ® System. Pillar 9â„¢ is the owner of the copyright in its MLSÂ® System. Data is deemed reliable but is not guaranteed accurate by Pillar 9â„¢. The trademarks MLSÂ®, Multiple Listing ServiceÂ® and the associated logos are owned by The Canadian Real Estate Association (CREA) and identify the quality of services provided by real estate professionals who are members of CREA. Used under license.