

# \$344,900 - 1210 6 Avenue S, Lethbridge

MLS® #A2256298

**\$344,900**

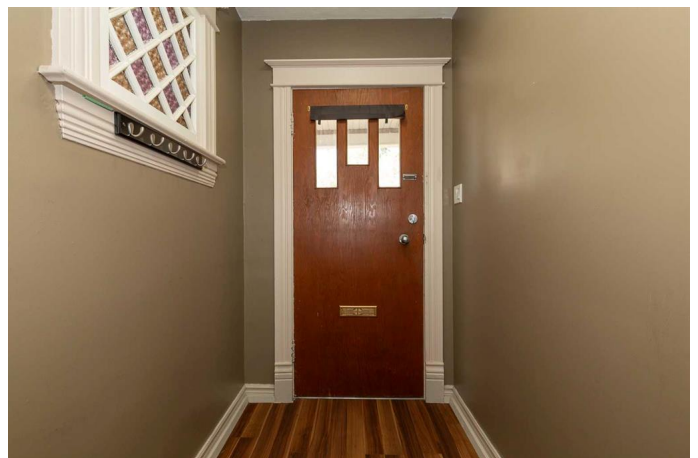
4 Bedroom, 1.00 Bathroom, 1,567 sqft

Residential on 0.12 Acres

London Road, Lethbridge, Alberta

Feel the pulse of the city in this timeless 1.5 storey character home, perfectly set in the heart of Lethbridge's iconic London Road neighborhood. Built in 1908, this 1,567 sqft character home is a perfect example of a bygone era while offering the comfort and peace of mind of modern upgrades. Inside, 10' ceilings, original 1" baseboards, and stunning original stained glass windows frame sunlit rooms that feel both grand and inviting. The front living room is the perfect place to curl up on a quiet evening. Through the large dining room and into the kitchen, subtle detailing brings a fresh, stylish touch that complements the home's heritage charm. A main floor bedroom makes an ideal office or creative space, a renovated four-piece bathroom and convenient laundry room is Upstairs, three bright bedrooms Each space filled with natural light and personality. This house has seen many thoughtful updates including electrical, plumbing, flooring and paint, a new hot water tank (2025), and a new roof (2017) give this historic home the peace of mind every homeowner deserves. In the backyard, unwind on the spacious deck in your own private retreat. Off-street parking, a 14x20 detached garage, and an attached shed add perfect function. Step into a piece of Lethbridge history—reach out to your REALTOR® today to experience it in person.

Built in 1908



## Essential Information

MLS® #	A2256298
Price	\$344,900
Bedrooms	4
Bathrooms	1.00
Full Baths	1
Square Footage	1,567
Acres	0.12
Year Built	1908
Type	Residential
Sub-Type	Detached
Style	2 Storey
Status	Active

## Community Information

Address	1210 6 Avenue S
Subdivision	London Road
City	Lethbridge
County	Lethbridge
Province	Alberta
Postal Code	T1J 1A4

## Amenities

Parking Spaces	1
Parking	Single Garage Detached
# of Garages	1

## Interior

Interior Features	Ceiling Fan(s), Storage
Appliances	See Remarks
Heating	Forced Air
Cooling	None
Fireplace	Yes
# of Fireplaces	1
Fireplaces	Electric
Basement	None

## Exterior

Exterior Features	None
-------------------	------

Lot Description	Back Yard, Landscaped, Standard Shaped Lot
Roof	Asphalt Shingle
Construction	Vinyl Siding
Foundation	Poured Concrete

### **Additional Information**

Date Listed	September 11th, 2025
Days on Market	18
Zoning	R-L(L)

### **Listing Details**

Listing Office	Lethbridge Real Estate.com
----------------	----------------------------

Data is supplied by Pillar 9â„¢ MLS® System. Pillar 9â„¢ is the owner of the copyright in its MLS® System. Data is deemed reliable but is not guaranteed accurate by Pillar 9â„¢. The trademarks MLS®, Multiple Listing Service® and the associated logos are owned by The Canadian Real Estate Association (CREA) and identify the quality of services provided by real estate professionals who are members of CREA. Used under license.